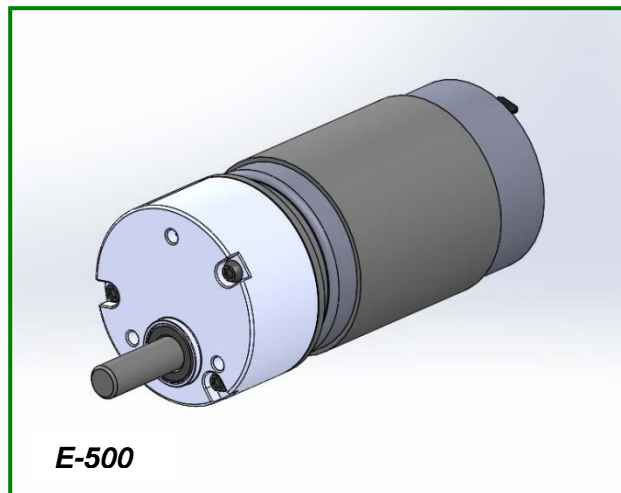


Compact, quiet and versatile, the E In-Line Series is ideal when space is a premium. A variety of features and gear reductions enable custom design and low life-cycle costs.

SPECIFICATIONS & CONSTRUCTION

- Type:** Zinc die cast DC gearmotor
- Output speeds:** 10 to 500 RPM
- Voltage:** 6Vdc to 36Vdc
- Bearings:** Self-aligning sintered bronze
- Termination:** Spade terminals or lead wires
- Duty Cycle:** Intermittent
- Motors Available:** 300, 500, EY, 2500, LY
- Insulation Class:** 300, 500, EY, 2500 =B; LY=F
- Rotation:** Reversible
- Cover:** Die cast
- Lubrication:** Synthetic Grease
- Regulatory Approvals:** RoHs



TYPICAL APPLICATIONS

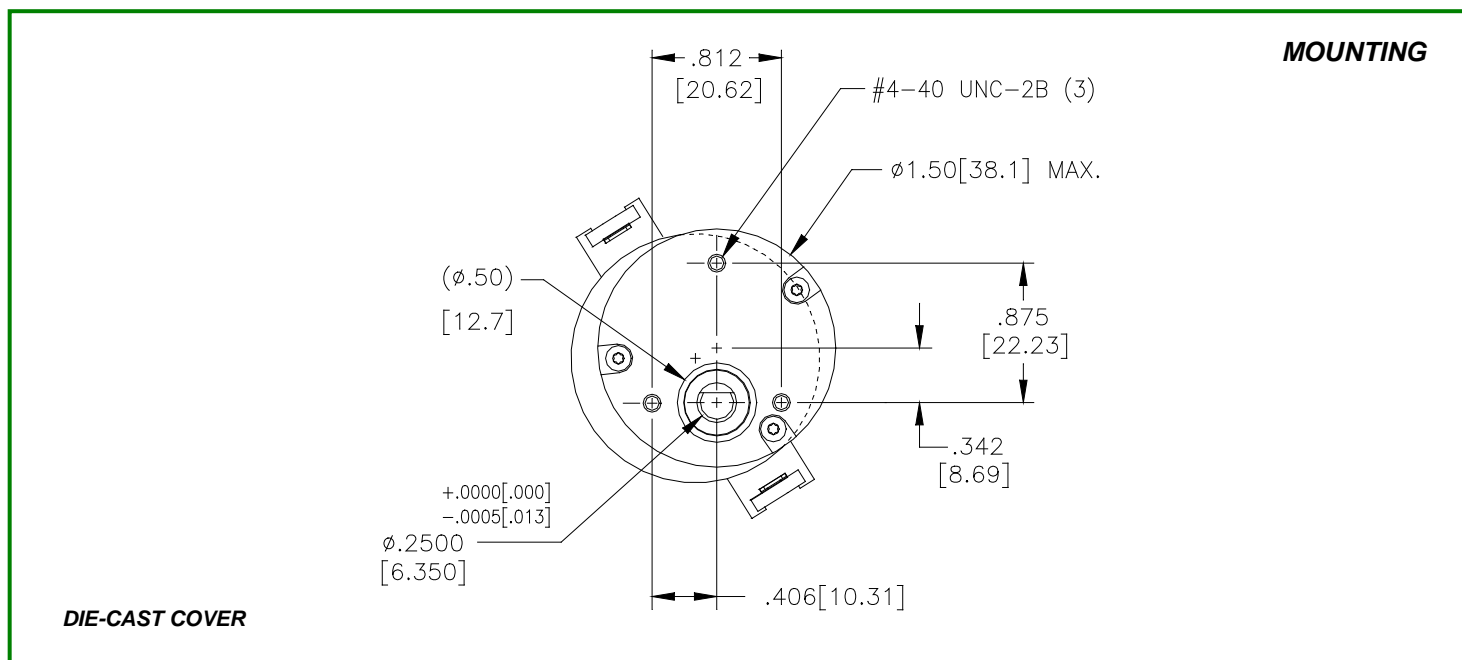
- Office Equipment
- Laminators
- Valve Actuators
- Medical Equipment
- Banking Equipment
- Ticket Dispensing

Maximum Permissible Torque: 10 In.Lb (1.1 Nm)
Speed: Up to 500 RPM

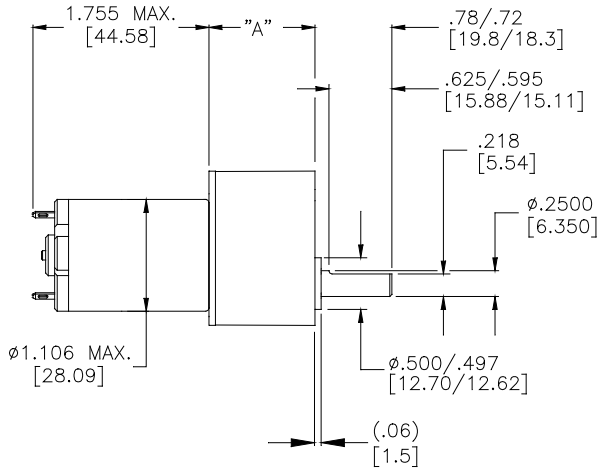
Note: Speed and torque combinations will vary depending on the motor/gearbox combination.

OPTIONAL FEATURES

- Customized output shafts
- Various lead lengths, terminals and connectors
- Ball bearings for high radial loads
- Ball bearing for motor
- EMI Filtering: Internal and External Suppression
- Magnetic Encoder: 2 to 12 PPR Resolution
- Optical or Capacitive: Up to 2048 PPR Resolution

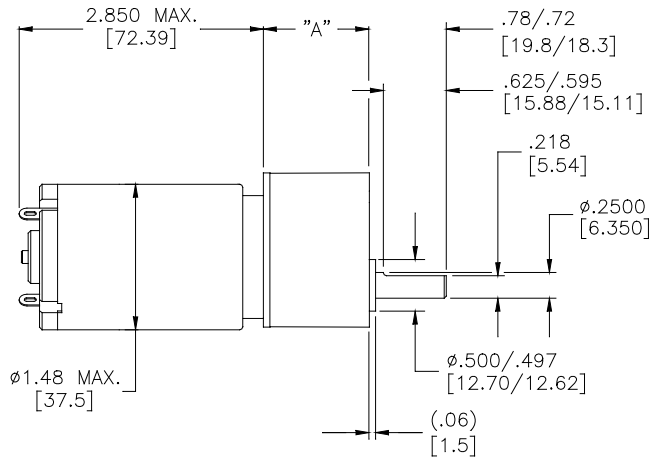


E300



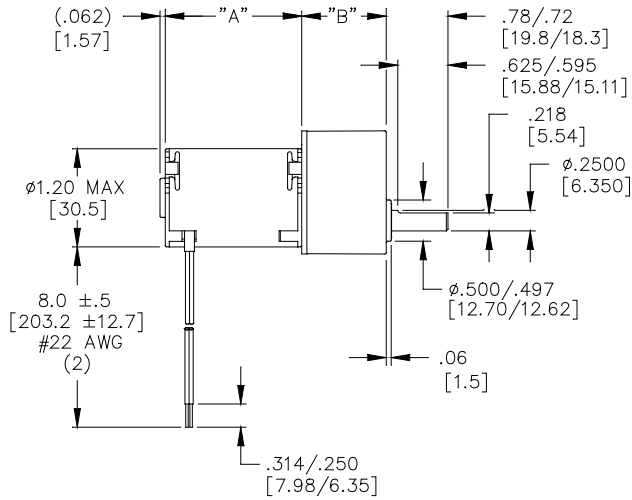
STANDARD DUTY	DIM "A" ±.010[0.25] IN INCHES [MILLIMETERS]
2-STEP	.778 [19.76]
3-STEP	.778 [19.76]
4-STEP	1.028 [26.11]
5-STEP	1.028 [26.11]
6-STEP	1.275 [32.38]
7-STEP	1.275 [32.38]

E500



STANDARD DUTY	DIM "A" ±.010[0.25] IN INCHES [MILLIMETERS]
2-STEP	.778 [19.76]
3-STEP	.778 [19.76]
4-STEP	1.028 [26.11]
5-STEP	1.028 [26.11]
6-STEP	1.270 [32.26]
7-STEP	1.270 [32.26]

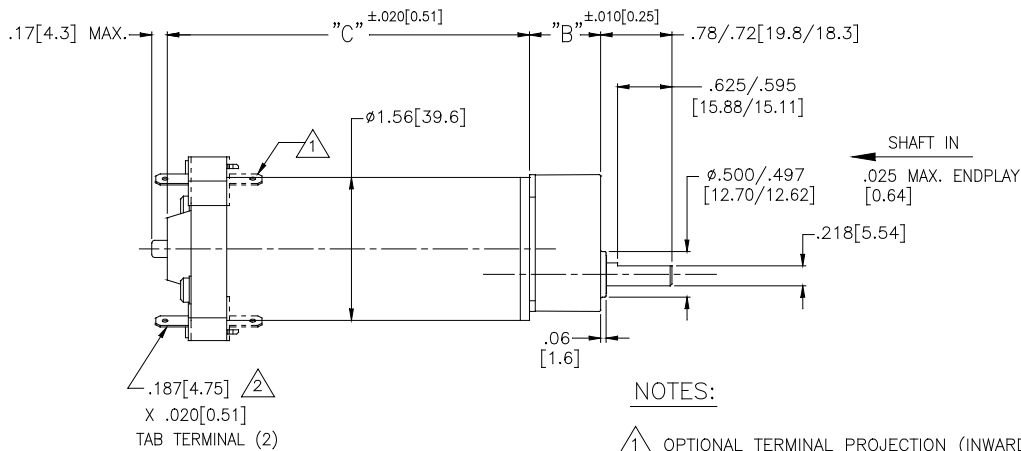
EYQE



BASEMOTOR TYPE	DIM "A" (MAX) IN INCHES [MILLIMETERS]
EYQM-3X SERIES	1.69 [42.9]
EYQM-6X SERIES	1.99 [50.6]
EYQM-7X SERIES	2.13 [54.1]

STANDARD DUTY	DIM "B" ±.010[0.25] IN INCHES [MILLIMETERS]
2-STEP	.778 [19.76]
3-STEP	.778 [19.76]
4-STEP	1.028 [26.11]
5-STEP	1.028 [26.11]
6-STEP	1.270 [32.26]
7-STEP	1.270 [32.26]

E2500



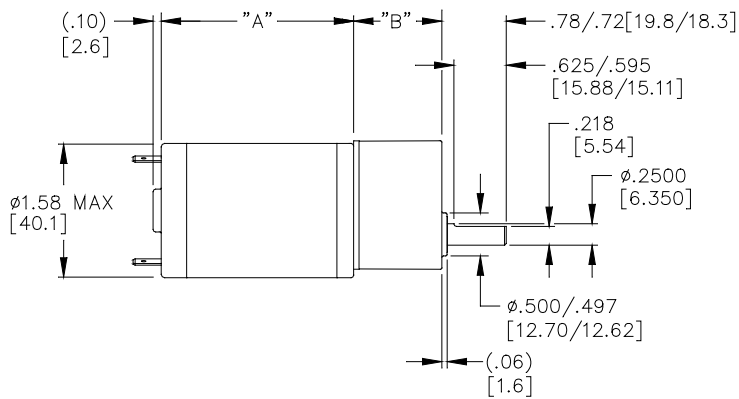
NOTES:

- 1 OPTIONAL TERMINAL PROJECTION (INWARD).
- 2 OPTIONAL .110[2.79] x .020[0.51] TERMINALS.

STANDARD DUTY	"B" DIM
2-STEP	.778[19.76]
3-STEP	.778[19.76]
4-STEP	1.028[26.11]
5-STEP	1.028[26.11]
6-STEP	1.270[32.26]
7-STEP	1.270[32.26]

MOTOR MODEL	"C" DIM
2508	2.172[55.17]
2512	2.422[61.52]
2518	2.797[71.04]
2524	3.172[80.57]
2532	3.672[93.27]

LYME



BASEMOTOR TYPE	DIM "A" (MAX) IN INCHES [MILLIMETERS]
LYMM-4X SERIES	2.11 [53.6]
LYMM-6X SERIES	2.36 [59.9]
LYMM-8X SERIES	2.61 [66.3]
LYMM-CX SERIES	3.11 [79.0]

STANDARD DUTY	DIM "B" ±.010[0.25] IN INCHES [MILLIMETERS]
2-STEP	.778 [19.76]
3-STEP	.778 [19.76]
4-STEP	1.028 [26.11]
5-STEP	1.028 [26.11]
6-STEP	1.270 [32.26]
7-STEP	1.270 [32.26]