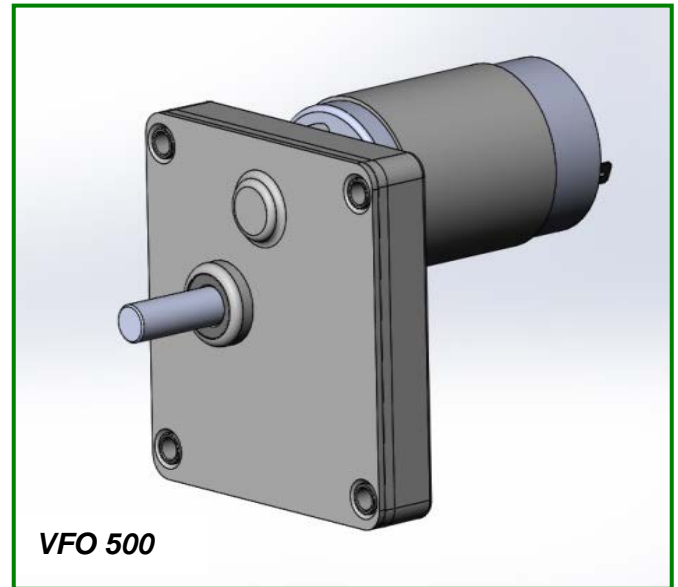


Compact, quiet and versatile, the VFO Series is ideal when space is a premium. A variety of features and gear reductions enable custom design and low life-cycle costs. The output shaft on the VFO is offset to allow for speeds as low as 1 RPM.

SPECIFICATIONS & CONSTRUCTION

Type: Zinc die cast DC gearmotor
Output speeds: 1 to 100 RPM
Voltage: 6Vdc to 36Vdc
Bearings: Self-aligning sintered bronze
Termination: Spade terminals or lead wires
Duty Cycle: Intermittent
Motors Available: 300, 500, 2500, LY
Insulation Class: 300, 500 =B; 2500, LY =F
Rotation: Reversible
Cover: Stamped Steel
Lubrication: Synthetic Grease
Regulatory Approvals: RoHs



VFO 500

TYPICAL APPLICATIONS

- Valve Actuators
- Switch Gears
- Displays
- Pellet Stoves & Grills
- Food Service Equipment
- Pumps

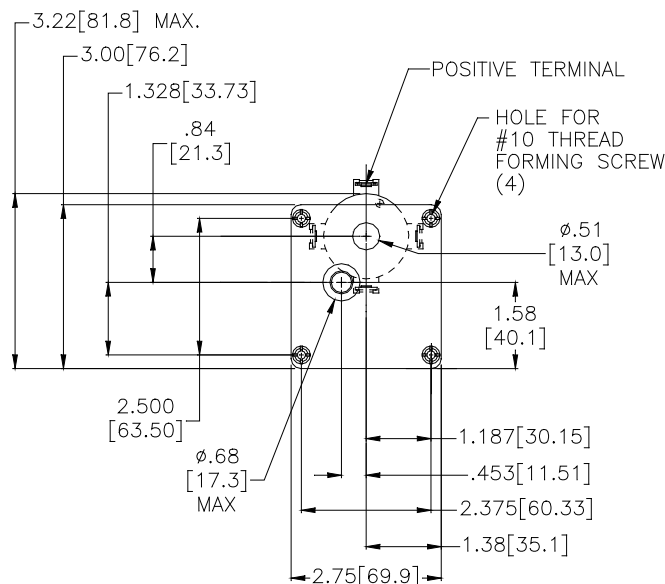
Maximum Permissible Torque: 50 In.Lb (5.6 Nm)
Speed: Up to 100 RPM

Note: Speed and torque combinations will vary depending on the motor/gearbox combination.

OPTIONAL FEATURES

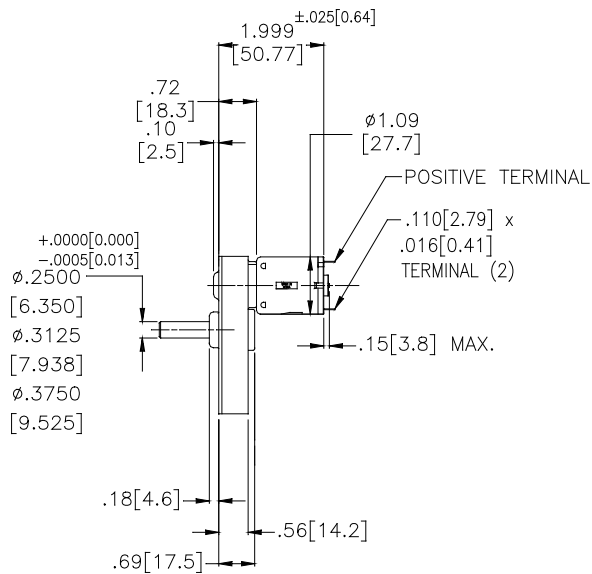
- Customized output shafts including dual output
- Various lead lengths, terminals and connectors
- Brakes: Electromagnetic
- Output Needle bearings for high radial loads
- Ball bearing for motor
- EMI Filtering: Internal and External Suppression
- Magnetic Encoder: 2 to 12 PPR Resolution
- Optical or Capacitive: Up to 2048 PPR Resolution

STAMPED STEEL COVER ONLY



MOUNTING

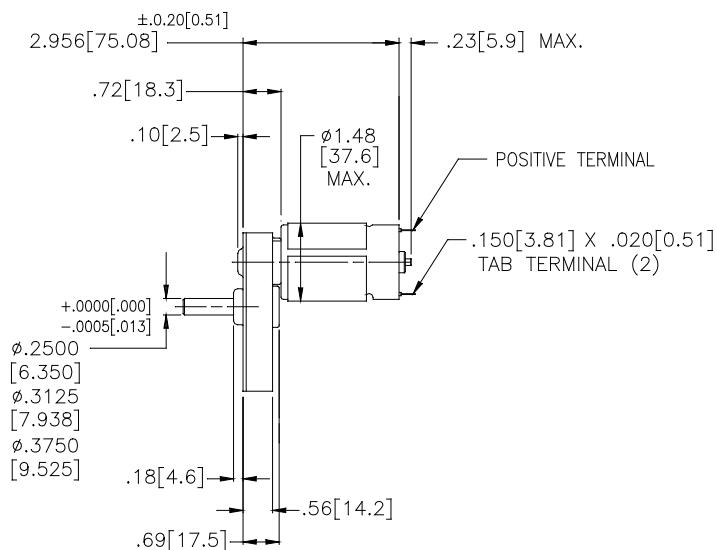
VFO300



NOTES:

1. BROKEN LINES REPRESENT OPTIONAL MOUNTINGS.
2. TERMINAL ORIENTATION IS SUBJECT TO APPLICATION.

VFO500



NOTES:

1. BROKEN LINES REPRESENT OPTIONAL MOUNTINGS.
2. TERMINAL ORIENTATION IS SUBJECT TO APPLICATION.

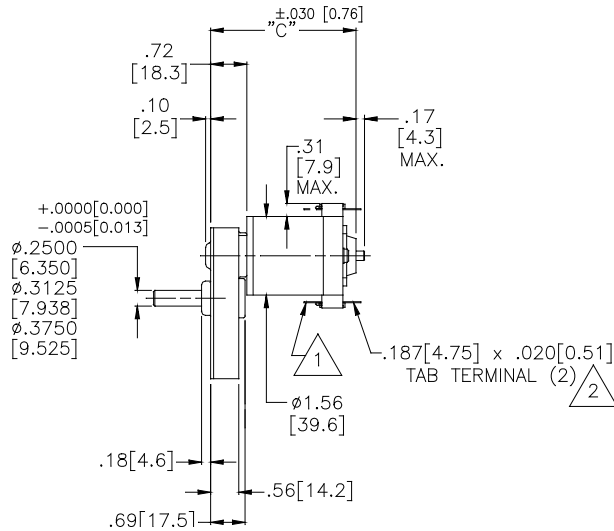
VFO SERIES PARALLEL SHAFT DC GEARMOTORS

Nidec - All for dreams



Merkle-Korff Industries

VFO2500

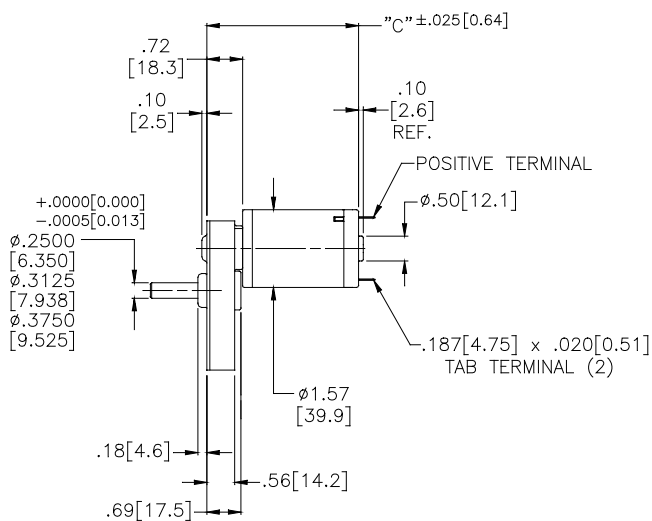


| MOTOR MODEL | "C" DIM |
|-------------|----------------|
| 2508 | 2.888 [73.36] |
| 2512 | 3.138 [79.71] |
| 2518 | 3.513 [89.23] |
| 2524 | 3.888 [98.76] |
| 2532 | 4.388 [111.46] |

NOTES:

- 1. OPTIONAL TERMINAL PROJECTION (INWARD).
- 2. OPTIONAL .110 [2.79] x .020 [0.51] TERMINALS.
- 3. BROKEN LINES REPRESENT OPTIONAL MOUNTINGS.

VFOLY



| MOTOR MODEL | "C" DIM |
|----------------|---------------|
| LY-4X (1/2") | 2.813 [71.45] |
| LY-6X (3/4") | 3.063 [77.80] |
| LY-8X (1") | 3.313 [84.15] |
| LY-CX (1-1/2") | 3.813 [96.85] |

NOTES:

- 1. BROKEN LINES REPRESENT OPTIONAL MOUNTINGS.
- 2. TERMINAL ORIENTATION IS SUBJECT TO APPLICATION.