

Compact, quiet and versatile, the ZFO Series is ideal when space is a premium. A variety of features and gear reductions enable custom design and low life-cycle costs. The output shaft on the ZFO is offset to allow for speeds as low as 5 RPM.

## SPECIFICATIONS & CONSTRUCTION

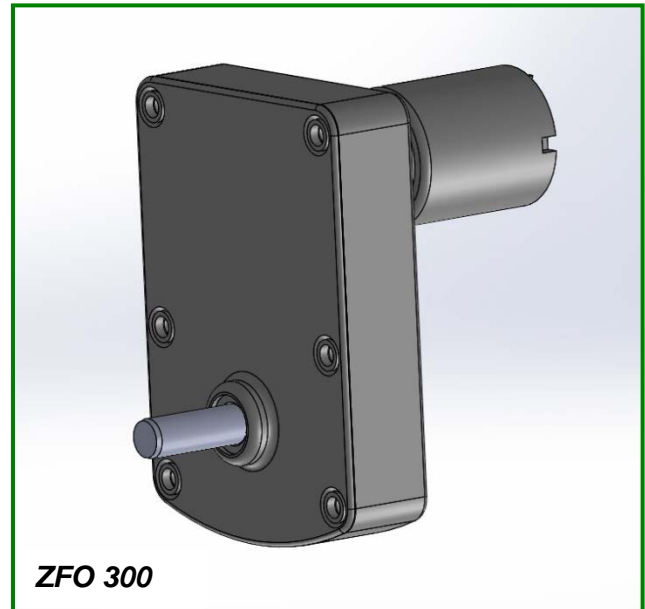
- Type:** Zinc die cast DC gearmotor
- Output speeds:** 5 to 100 RPM
- Voltage:** 6Vdc to 36Vdc
- Bearings:** Self-aligning sintered bronze
- Termination:** Spade terminals or lead wires
- Duty Cycle:** Intermittent
- Motors Available:** 300, 500
- Insulation Class:** B
- Rotation:** Reversible
- Cover:** Stamped Steel
- Lubrication:** Synthetic Grease
- Regulatory Approvals:** RoHs

## TYPICAL APPLICATIONS

- Ingredient Dispenser
- Banking Equipment
- Instrumentation
- Prison Lock Mechanis
- Food Service Equipment
- Pumps

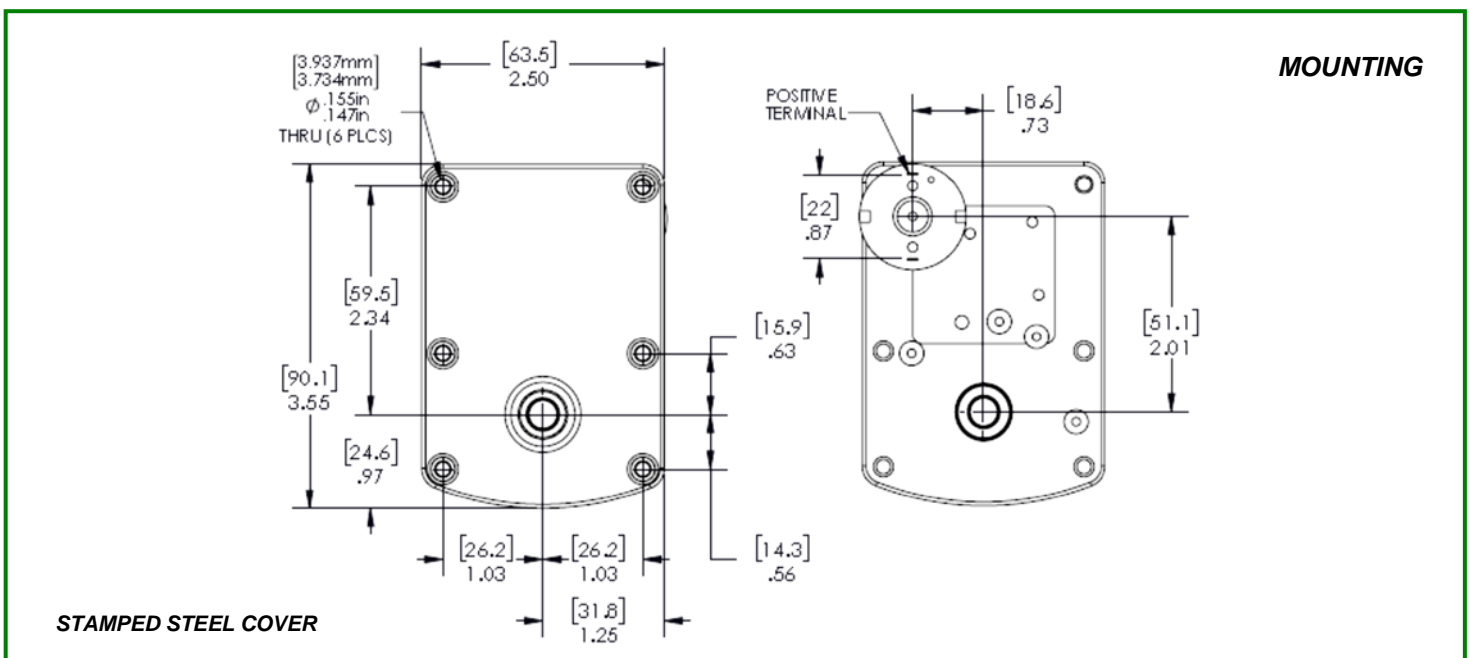
## OPTIONAL FEATURES

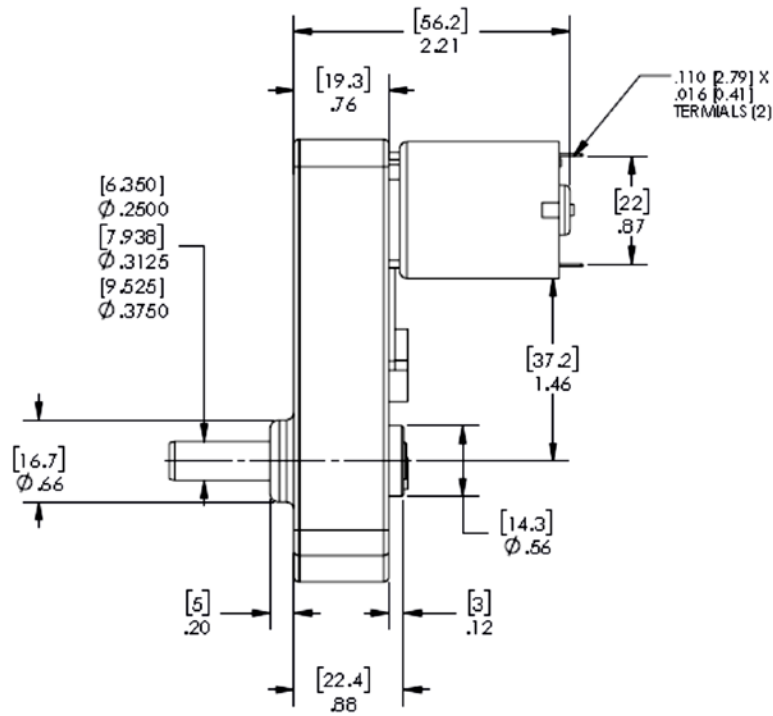
- Customized output shafts including dual output
- Various lead lengths, terminals and connectors
- Brakes: Electromagnetic
- Output Needle bearings for high radial loads
- Ball bearing for motor
- EMI Filtering: Internal and External Suppression
- Magnetic Encoder: 2 to 12 PPR Resolution



**Maximum Permissible Torque: 50 In.Lb (5.6 Nm)**  
**Speed: Up to 100 RPM**

*Note: Speed and torque combinations will vary depending on the motor/gearbox combination.*





ZFO 300