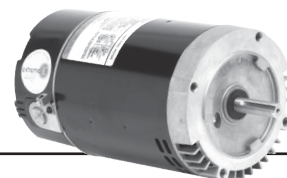


C-Flange Pool and Spa Motors

Switchless Design, 6.5" Frame Diameter, Category "C" & "J"



FEATURES:

- Two Compartment
- Shaft Threads - 7/16-20 UNF-2A
- 50°C Ambient
- 1081 Design
- Continuous Duty
- Class B Insulated
- Open Dripproof
- 300 Series Stainless Steel Shaft
- Thermally Protected
- Voltage Selection Device (Dual Voltage Only)



- Optimized internal airflow design minimizes heat and moisture buildup inside the motor
- Internal bearing cover protects the drive/pump end ball bearing from water and debris that may occur inside of the motor
- Three additional layers of drive/pump end bearing protection:
 - Double Sealed Ball Bearing
 - Lip Seal
 - Water Slinger

Standard Efficient, Total Horsepower Rated



THP	RPM	Voltage	Freq	Amps	Shaft	Catalog Number	Motor Frame	Length Less Shaft	Wgt.
0.98	3450	230/115	60	5.4/10.8	Threaded	ASB126	56J	10.26	21
1.25	3450	230/115	60	7.0/14.0	Threaded	ASB127	56J	10.76	24
1.65	3450	230/115	60	7.7/15.4	Threaded	ASB128	56J	11.01	25
2.25	3450	230/115	60	10.8/21.6	Threaded	ASB129	56J	12.01	31
2.60	3450	230	60	11.5	Threaded	ASB130	56J	11.76	33
3.45	3450	208-230	60	14.8-13.5	Threaded	ASB818	56J	12.51	39
5.00	3450	208-230	60	21.0-19.4	Threaded	ASB819 ^Δ	56J	14.01	51

extreme-E Premium Energy Eff., Total Horsepower Rated (Suitable for 50Hz)**



THP	RPM	Voltage	Freq	Amps	Shaft	Catalog Number	Motor Frame	Length Less Shaft	Wgt.
0.98	3450	208-230/115	60	4.5-4.3/8.6	Keyed	ASB656	56C	10.51	24
0.98	3450	208-230/115	60	4.5-4.3/8.6	Threaded	ASB657	56J	10.51	24
1.25	3450	208-230/115	60	5.9-5.5/11.0	Keyed	ASB634	56C	11.01	27
1.25	3450	208-230/115	60	5.9-5.5/11.0	Threaded	ASB638	56J	11.01	27
1.65	3450	208-230/115	60	7.6-7.2/14.4	Keyed	ASB653	56C	11.26	29
1.65	3450	208-230/115	60	7.6-7.2/14.4	Threaded	ASB654	56J	11.26	29
2.25	3450	208-230/115	60	9.7-9.0/18.0	Keyed	ASB795	56C	12.01	35
2.25	3450	208-230/115	60	9.7-9.0/18.0	Threaded	ASB796	56J	12.01	35
2.60	3450	208-230	60	10.6-10.0	Keyed	ASB808	56C	12.01	34
2.60	3450	208-230	60	10.6-10.0	Threaded	ASB809	56J	12.01	34
3.45	3450	208-230	60	14.8-13.5	Keyed	ASB817	56C	12.51	39
3.45	3450	208-230	60	14.8-13.5	Threaded	ASB818	56J	12.51	39
5.00	3450	208-230	60	21.0-19.4	Threaded	ASB819 ^Δ	56J	14.01	51
5.00	3450	208-230	60	21.0-19.4	Threaded	♦ASB116 ^{Δ◇}	56Y	14.76	53

PENTAIR Max-E-GLAS^{®†} & DURA*GLAS^{®†} Replacement Motor Base Available B3574344900010L

Δ190 Volt Maximum Operating Voltage for 50 Hz

♦B14 flange, metric shaft

◇ Not Normally Stocked

** Contact dealer for full conditions of operation

Catalog numbers are for competitive comparison purposes only.

extreme-E Extreme-E[®] represents our most efficient running, highest performing lines of motors.

† All marks shown within this document are properties of their respective owners.



C-Flange Pool and Spa Motors Switchless Design, 6.5" Frame Diameter (Continued): Category "C" & "J"



FEATURES:

- Two Compartment
- Shaft Threads - 7/16-20 UNF-2A
- 50°C Ambient
- 1081 Design
- Continuous Duty
- Class B Insulated
- Open Dripproof
- 300 Series Stainless Steel Shaft
- Thermally Protected
- Secondary "Max Pump" Service Factor (SF) for C-Flange motors to allow for popular OEM pump loading

extreme-E Two Speed, Total Horsepower Rated, Soft Start

THP	RPM	Voltage	Freq	Amps	Shaft	Catalog Number	Motor Frame	Length Less Shaft	Wgt.
1.25/0.17	3450/1725	115V	60	14.5/5.3	Threaded	EB973 ⁹	56J	11.02	28

⁹Not Normally Stocked

NOTE: Toggle switch cover assembly available for two speed models - LO-OFF-HI- X297576970000L

HAYWARD NorthStar™† Replacements C-Flange Switchless Design, 6.5" Frame Diameter, Threaded Shaft: Category "N"

FEATURES:

- Two Compartment
- Triple Bearing Protection
- Thermally Protected
- 1081 Design
- Shaft Threads - 7/16-20 UNF-2A
- Class B Insulated
- Open Dripproof
- Continuous Duty
- 60°C Ambient
- 6.5" Diameter Frame
- 300 Series Stainless Steel Shaft
- Sealed Ball Bearings
- Voltage Selection Device (Dual Voltage Only)



extreme-E Premium Energy Efficient, Full Service Factor, Full Rated



HP	SF	THP	RPM	Voltage	Freq	SF Amps	Catalog Number	Motor Frame	Length Less Shaft	Wgt.
3/4	1.85	1.40	3450	208-230/115	60	6.0-5.5/11.0	ESN1072	56J	11.01	27
1.0	1.85	1.85	3450	208-230/115	60	8.5-7.8/15.6	ESN1102	56J	11.51	30
1.5	1.60	2.40	3450	208-230/115	60	11.0-10.2/20.4	ESN1152	56J	12.01	33
2.0	1.35	2.70	3450	208-230	60	13.0-11.8	ESN1202	56J	12.01	35
3.0	1.60	4.80	3450	208-230	60	20.6-19.0	ESN1302	56J	14.01	47

extreme-E Premium Energy Efficient, Low Service Factor, Up/Max Rated



HP	SF	THP	RPM	Voltage	Freq	SF Amps	Catalog Number	Motor Frame	Length Less Shaft	Wgt.
1.0	1.40	1.40	3450	208-230/115	60	6.0-5.5/11.0	EUSN1102	56J	11.01	27
1.5	1.25	1.85	3450	208-230/115	60	8.5-7.8/15.6	EUSN1152	56J	11.51	30
2.0	1.20	2.40	3450	208-230/115	60	11.0-10.2/20.4	EUSN1202	56J	12.01	33
2.5	1.10	2.70	3450	208-230	60	13.0-11.8	EUSN1252	56J	12.01	35
3.0	1.20	3.60	3450	208-230	60	16.0-14.8	EUSN1302	56J	12.76	41

* California Energy Commission (CEC) Appliance Regulations (Title 20) compliant
Catalog numbers are for competitive comparison purposes only.

extreme-E Extreme-E[®] represents our most efficient running, highest performing lines of motors.

† All marks shown within this document are properties of their respective owners.

