

Full Line Product Overview

HVACR MOTORS | GENERAL PURPOSE MOTORS |
DEFINITE PURPOSE MOTORS | SPECIAL PURPOSE MOTORS

Nidec



Countless Solutions. Expert Support.

General Purpose Industrial Motors

Three Phase, TEFC, WORLD MOTOR® HOSTILE DUTY®

- 1/4-250 HP
- 3600, 1800, 1200 and 900 RPM
- 56-449 Frame
- NEMA Premium^{®†} efficient
- Cast iron frame and brackets
- Ball and roller bearing options



Three Phase, ODP

- 1/4-400 HP
- 3600, 1800, 1200 and 900 RPM
- 48-449 Frame
- Energy and NEMA Premium^{®†} efficient



Three Phase, TEFC, WORLD MOTOR® CORRO-DUTY®

- 1-400 HP
- 3600, 1800 and 1200 RPM
- 143-449 Frame
- All cast iron construction
- NEMA Premium^{®†} efficient
- Ball and roller bearing options



Single Phase, Split Phase, ODP and TEFC

- 1/12-3/4 HP
- 3600, 1800, 1200 and 900 RPM
- 48-56 Frame
- Rigid welded and cradle bases
- Single and two speed options
- C-Face Footed and Footless
- Automatic or manual or reset thermal overload protector options



Three Phase, TEFC, WORLD MOTOR® 841 PLUS®

- 1-400 HP; All cast iron frame and brackets
- 3600, 1800 and 1200 RPM
- 143-449 Frame
- VBXX^{®†} bearing isolators by Inpro/Seal^{®†} helps protect bearings
- Meets IEEE^{®†} 841 GM7E-TA specifications
- Five-year limited warranty
- NEMA Premium^{®†} efficient



Single Phase, Capacitor Start, ODP and TEFC

- 1/8-10 HP
- 3600, 1800 and 1200 RPM
- 48-215 Frame
- Rigid welded and cradle bases
- C-Face Footed and Footless
- Automatic or manual reset thermal overload protector options



C-Face: ODP, TEFC and Hazardous Location

- Single Phase, Split Phase and Capacitor Start
- Three Phase, Footed and Footless options
- 1/4-60 HP
- 3600, 1800 and 1200 RPM
- 56-326 Frame; TEFC to 400 Frame
- Standard, Energy and Premium Efficient



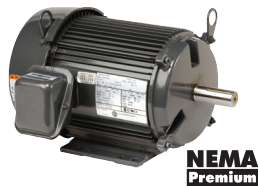
TITAN® Horizontal

- Three Phase, ODP, WPI, WP11, TEFC, TEAAC, TEWAC and Hazardous Location
- 150-4000 HP
- 3600, 1800, 1200, 900, 720, 600 and 514 RPM
- 449-9610 Frame
- 460-6900 Volts
- Ball or sleeve bearings available



Three Phase, TEFC, UNIMOUNT® and STEEL EDGE®

- 1/4-30 HP
- 3600, 1800, 1200 and 900 RPM
- 56-286 Frame
- Energy and NEMA Premium^{®†} efficient
- C-Face, Footed and Footless and removable base



A Variety of Conversion Options Available to Maximize Stock Flexibility

When quick deliveries are required on customized motors, our expansive inventory can be customized to provide special features. Our experienced Factory Technicians specialize in stock motor modifications to offer a speedy response to customer needs. Conversion Centers are located in Southaven, MS and Los Angeles, CA.

Definite Purpose Motors

Vector Duty

- Three Phase, TENV
- 0.25-20 HP (TENV)
- 56–256 Frame
- 0–1800 RPM
- Constant torque near zero RPM
- Three-year limited warranty on inverter power



ACCU-Torq® 5000:1
Constant Torque

Inverter Duty

- Three Phase, ODP and TEFC
- 1–400 HP
- 3600, 1800, 1200 and 900 RPM
- 143–449 Frame
- Meets NEMA® MG1 Part 31 requirements for inverter duty



ID300

- Integrated motor and drive
- 1-10 HP
- 230V/460V range
- 1 and 3 phase inputs
- Utilizes NEMA Premium® motors



Hot Water Circulator Pump

- Single, ODP
- 1/12–1/2 HP
- 1800 RPM
- 48 and 56 Frame
- Direct replacement motor for B&G® (Bell & Gossett), Taco® and Thrush™ brand circulator pumps



Carbonator Pump

- Single Phase, ODP
- 1/4–1/2 HP
- 1800 RPM
- 48 Frame



Air Compressor

- Single Phase, ODP
- 1/2–5 HP
- 3600 RPM
- 56, 143 and 184 Frame
- High breakdown torque



Gate and Door Motors

- Single and Three Phase, ODP and TEFC
- 1/3–1 HP
- 1800 RPM
- 56 and 56C Frames



Brake Motor

- Three Phase, TEFC with Brake Added
- 1/3–20 HP
- 1800 and 1200 RPM
- 56–256 Frame
- Rigid base, C-Face, Footed and Footless



Farm Duty

- Single and Three Phase, TEFC
- 0.25–10 HP
- 900, 1800, and 3600 RPM
- 48–215 Frame
- High torque or extra high torque



ACCU-Torq Blower Cooled and Non-Ventilated

- Three Phase, TEFC
- 3–350 HP
- 180-449 Frame
- Inverter Grade® insulated motors exceeded NEMA® MG-1 Part 30 & 31 standards



Commercial and Residential Water System Pumps

- Single and Three Phase, ODP and TEFC
- 1/3–3 HP
- 3600 and 1800 RPM
- 48 and 56 Frame
- C-Face, square flange
- Footed and Footless



Pool and Spa Motor

- Single and Three Phase, ODP and TEFC
- 1/2–5 HP
- 3450 RPM
- 48 and 56 Frame
- Thru-bolt, C-Face and square flange
- UL® 1081, 1795 and 1563 design



Neptune™ Variable Speed Pool Motor

- Direct replacement C-Face or Square Flange frames
- IPX5 rated TEFC and BPM motor
- 1.25, 1.65, 2.25, and 2.7 THP
- Integrated motor/drive with onboard UI



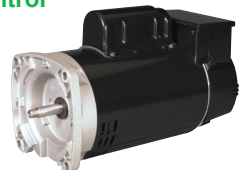
Affinity® Variable Speed Pool Motor and Control

- 6.5" Frame Diameter; 56J C-Face or 56Y Square Flange frame
- 3.45 THP, Variable RPM
- Freeze Sensor
- Fully integrated motor control



Affinity® 2 Speed Pool Motor and Control

- 6.5" Frame Diameter; 56J C-Face or Square Flange
- 1.25 - 2.60 THP; 3450/1725 RPM
- Freeze Sensor
- Fully integrated motor control



Automotive Duty, U-frame

- Three Phase, TEFC
- 1/4-300 HP
- 3600, 1800, 1200 and 900 RPM
- 182-5008 Frame
- Meets General Motors® GM-7EQ & GM-7EH, Ford® EM1, and Chrysler® NPEM-105 spec



Special Purpose Motors

Close Coupled Pump

- Single and Three Phase, ODP, TEFC and Hazardous Location
- 1–60 HP
- 3600 and 1800 RPM
- 143–326 Frame
- JM and JP shafts available
- Energy and NEMA Premium[®] Efficient



Elevator Duty

- Single and Three Phase
- Submersible and Dry Hydraulic
- 3–75 HP
- 3600, 1800 and 1200 RPM
- Z and L32 flange mounting



Cooling Tower

- Three Phase, TEFC and TEAO
- 2–150 HP
- 1800, 1200 RPM
- 145–405 Frame
- Single and two speed
- NEMA Premium[®]/inverter duty
- Replacement for Baltimore Aircoil Company[®], Evapco[®] and SPX Cooling Technologies (Marley[®])
- Stock Ratings Available
 - TEFC 2-75HP@1800 RPM
 - TEAO 2-100HP@1800 RPM
- JM and JP shafts available
- Energy and NEMA Premium[®] Efficient



Painted Washdown

- Single and Three Phase, TEFC
- 1/2–10 HP
- 3600, 1800 and 1200 RPM
- 56–215 Frame
- Foot mounted, C-Face Footed and Footless
- Compliant with EISA Standards



Fire Pump Motor

- Three Phase, ODP
- 3–500 HP
- 3600 and 1800 RPM
- 184–5012 Frame
- UL[®] listed for fire pump application
- Available in horizontal frame and vertical JP close couple pumps



Paint-Free Washdown

- Three Phase, TENV
- 1/2–10 HP
- 1800 RPM
- 56–215TC Frame
- VBX[®] bearing isolators by Inpro/Seal[®]
- Inverter Duty
- Compliant with EISA Standards



Stainless Steel Washdown

- Three Phase, TENV and TEFC
- 1/2–10 HP
- 3600 and 1800 RPM
- 56HC–215TC Frame
- All stainless steel construction
- Rust inhibitor on stator and rotor
- Compliant with EISA Standards



Vertical Pump Motors

- Three Phase, WPI, WP11, TEFC and Hazardous Location
- 3-4000 HP
- 3600, 1800, 1200, 900, 720, 600 and 514 RPM
- 182-9608 Frame
- Designed for high or normal thrust
- Available in Vertical HOLLOSHAFT[®] and Vertical Solid Shaft



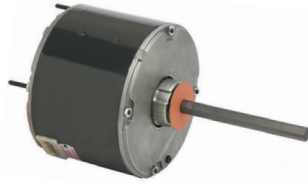
All high performance motors carry a nameplate including a NEMA Premium[®] trademark and European IE efficiency marks, providing a clear means for both users and OEM's to determine global regulatory compliance for their application.

U.S. MOTORS[®] is a registered trademark of Nidec Motor Corporation. For more information about the U.S. MOTORS[®] brand visit www.nidec-motor.com or www.usmotors.com.

HVACR Product Line Overview *(continued on back)*

Standard Condenser Fans

- Single and Three Phase
- 1/10–2 HP
- 1725, 1625, 1550, 1075 and 825 RPM
- Single and two speed



MOJAVE® Series Condenser Fans

- Motors suited for a warmer climate
- Single and two speed
- 1/4–3/4 HP
- Sleeve Bearing
- 70°C Ambient Design



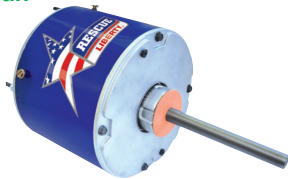
RESCUE® Condenser Fan Motors

- Replaces a variety of different HP applications
- Multi-horsepower
- 1/3–1/6 HP or 1/2 to 1/5 HP
- 1075 RPM, 48 Frame



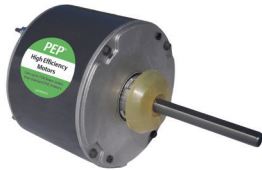
RESCUE® LIBERTY™ Condenser Fan

- Made in the USA
- 1/3–1/6 HP
- 1075 or 825 RPM/two speeds
- 208–230V
- Open Air Over (OAO)



PEP® High Efficiency Condenser Fan Motor

- 76% Efficient Single Phase PSC, High Ambient
- Up to 1/2 HP in 1075 & 825 RPM
- 48 Frame, TEAO, Ball Bearing
- 70°C / 158°F, 50/60 Hz Rated



VariTough® Motors Commercial Condenser Motors

- Designed for Inverter Duty, multiple motor environment
- 1/2–2 HP
- 850, 1140 RPM
- 56YZ Frame, ODP, Shaft Up Design
- 70°C / 158°F max ambient



RESCUE EZ-Wire® Motor in Clear Pack

Easy to wire, easy to view, easy to showcase

EZ-Wire® Condenser

- 1/3–1/8 HP
- 208–230V
- 1075 and 825 RPM

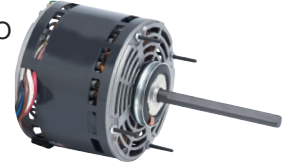


EZ-Wire® Direct Drive Fan and Blower

- 1/2–1/6 HP
- 115 or 208–230V
- 1075/4 SPD

Standard Fan and Blower

- Single Phase, ODP, OAO and TEAO
- 1/6–1-1/2 HP
- 3450, 1725, 1075 and 825 RPM
- Single, two, three and four speed
- Belt drive and direct drive



RESCUE EcoTech® High Efficiency Direct Drive Blower

- Drop in replacement for PSC Direct Drive Commercial and Residential Air Handlers and Furnaces
- Multi-Horsepower
- Up to 82% Efficient
- 1/5–1 HP
- 1075 RPM, 48 Frame



RESCUE EcoTech® Outdoor 48 EC Condenser Fan Motor High-Efficiency ECM for Residential & Commercial HAC Condenser Fans

- 1/3–1/5 HP
- 208–230V
- 825 and 1075 RPM
- TEAO



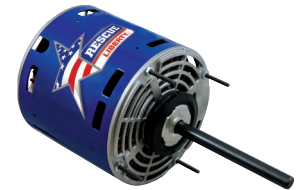
RESCUE EcoTech® Outdoor 56 EC Condenser Fan Motor High-Efficiency ECM for Commercial Refrigeration Condensers

- 2 1/4 or 2 1/2 HP
- 3Ø, 208V or 460V
- 300–1200 RPM



RESCUE® LIBERTY™ Furnace and Air Handler Direct Drive Blower

- Made in the USA
- 1/2–1/6 HP
- 1075 RPM/4 speeds
- 115 or 208–230V
- Open Air Over (OAO)



High Efficiency ECM Refrigeration Motors

RESCUE EC Watt Motor for Refrigeration Evaporator and Condensing Applications

- 4–25 Watt
- Fan pack replacement assembled with blade and shroud



RESCUE EC Walk-In Evaporator Motor Designed for Cooler/Freezer Applications

- 1/15–1/25 HP



Both motors:

- IP65, IP66, IP67 rated
- Meet ATEX Directive 94/9/EC
- Dual voltage, dual rotation

Evaporative Cooler

- Single Phase, ODP
- 1/3–1 HP
- 1725 RPM
- 56 Frame
- Single and two speed
- Corrosion resistant rotor core and actuator assembly



HVACR Product Line Overview *(continued)*

Unit Heater

- Single Phase, TEAO
- 1/15–3/4 HP
- 1550 and 1075 RPM
- 48 and 56 Frame
- Cradle and stud mount



Air Circulator Motors

- Single Phase, OAO and TEAO
- 1/4–1/2 HP
- 1800, 1200, 1100, 1075 and 900 RPM
- 48 Frame
- Single and two speed options
- Non-oscillating



Fan Coils

- Single Phase, OAO and TEAO
- 1/10–3/4 HP
- 1725 and 1075 RPM
- 42 and 48 Frame
- Single, two, three, four and five speed
- Automatic reset thermal overload protector



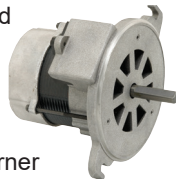
PSC Packaged Terminal A/C Heat Pump Motors

- Single Phase, OAO and TEAO
- 1/30–3/4 HP
- 1625, 1050, 1100 and 925 RPM
- 5.0", 5.6" and 6.3" diameter
- Single, two, three and four speed



Oil Burner

- Single Phase, Totally enclosed when mounted
- 1/8–1 HP
- 3450 and 1725 RPM
- 48 and 56 Frame
- Direct OEM replacement for Beckett[†], Carlin[†], Ducane[†] and Wayne[†] Home Oil Burner Systems



RESCUE[®] 3.3 Refrigeration Evaporator Motors

- OAO and TEAO
- Dual cord for OEM connection
- Reversible PSC designs
- Reversibility reduces SKUs to stock



RESCUE EZ13[®] Motor

- Universal ECM replacement for furnaces and air handlers
- Auto-Rotation sensing
- 1/3–1/2, 3/4 and 1 HP
- 115/208–230V
- 1075 RPM, 48 Frame, OAO



RESCUE EZ16[®] Motor

- Universal ECM replacement for furnaces and air handlers
- Field Tunable EZ Interface (EZI) included
- 24Vac or PWM inputs
- 1/3, 1/2, 3/4 and 1 HP
- 115/208–230V
- 1075 RPM, 48 Frame, OAO



RESCUE Select Pro[™] Motor

- Preprogrammed with the option to match the OEM Profile
- ECM replacement for furnaces and air handlers
- Integrated Bluetooth[®] technology
- 1/3–1/2, 3/4 and 1 HP
- 115/208–230V
- 1075 RPM, 48 Frame, OAO



RESCUE PERFECTSPEED[®] ECM with User Interface

- Meets increasing demand for EC motors in HAC and ventilation systems
- 1/3, 1/2, 3/4 and 1 HP
- 300–1200 RPM, Variable speed using on board or user supplied external potentiometer
- 1Ø, 115/208–230 or 277 Volts
- 48 Frame, OAO



U.S. Motors Complementary Products

Available to make the most of your motor purchase



eBusiness Solutions

State-of-the-art eBusiness systems that offer real-time solutions. Whether you need to check stock availability or need detailed specifications, you can access online information anytime, anywhere.

[†] All marks shown within this document are properties of their respective owners. For more information about the U.S. MOTORS brand, visit www.usmotors.com.

Nidec, 2020; All Rights Reserved. U.S. Motors[®] is a registered trademark of Nidec Motor Corporation. Nidec Motor Corporation trademarks followed by the ® symbol are registered with U.S. Patent and Trademark Office

www.nidec-motor.com | www.usmotors.com
FLB/2020 Rev 09/20
20-8552-01

eCatalog/Cross Reference

Our eCatalog/Cross Reference makes it easier and faster than ever to find the right motor to meet your needs. The eCatalog provides details on all U.S. MOTORS[®] brand stock motor ratings; the Cross Reference matches obsolete motor numbers or competitor part number with a current U.S. MOTOTRS item that is the best replacement. Learn more at www.usmotors.com/online-catalog.

Monthly Aftermarket Email Newsletter

The Nidec News is a monthly e-newsletter exclusively for permission-based subscribers. Sign up and you'll be the first to learn about new products, special programs, money-saving offers and more. Contact your U.S. MOTORS Sales & Business Development Manager to learn more.

MotorPro[®] Training

MotorPro[®] is a self-paced, interactive online electric motor training tool. After you complete MotorPro training, we will send you a certificate of completion. Sign on today at www.usmotors.com/motorpro to become a motor professional!

Relay on US[™]

Nidec

8050 W. Florissant Avenue | St. Louis, MO 63136
Phone: 855-487-6686 | Fax: 800-899-2887