

Washdown Motors

Painted, Paint-Free and All Stainless Steel



Horsepower: 1/4 – 15 HP

Phases: Single and Three

Enclosures: Totally Enclosed Fan Cooled (TEFC) and Totally Enclosed Non-Ventilated (TENV)

Efficiency Levels: Standard, Energy and Premium Efficient

Mounting: Rigid Base, C-Face Footed, C-Face Footless and Yoke Mount



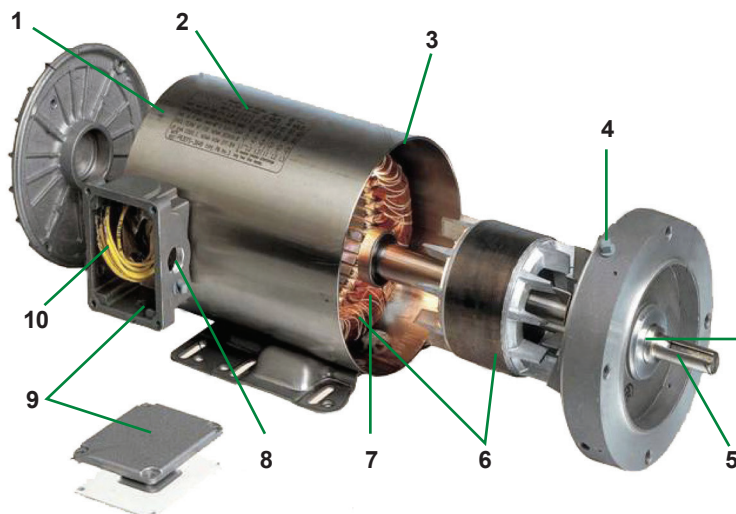
Product Overview and Options

U.S. MOTORS® brand washdown duty motors are designed for use in food processing and other applications where motors are routinely exposed to washdown, certain chemicals, moisture, and humidity. Washdown motors provide durability and flexibility to help maximize uptime and reduce overall operating costs.

Offered in painted, paint-free, and all stainless steel, U.S. MOTORS brand washdown motors are certified to meet the requirements of the Baking Industry Sanitation Standards (BISSC).

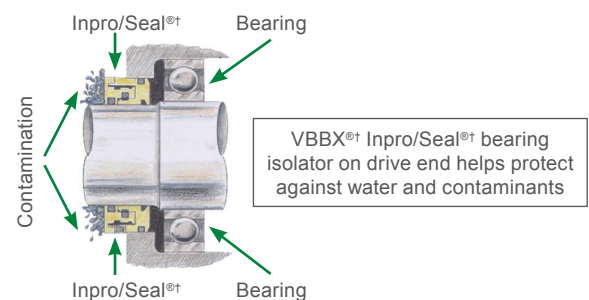
Typical Applications:

- Food processing
- Beverage manufacturing
- Meat packing plants
- Sugar refineries
- Pharmaceutical manufacturing



Motor Construction:

1. Stainless steel frame and hardware help prevent rust due to moisture.
2. Laser-etched oversized nameplate is easy to read and reduces the chance of trapping food particles or dirt.
3. Inverter Grade™ Insulation System for use with adjustable frequency drives enables improved efficiency and control.
4. T-type drains help prevent need to remove plugs after installation and allow for all position mounting
5. 303 stainless shaft helps prevent connected drive components from rusting to shaft
6. Rust inhibitor rotor and stator provide added protection against corrosion.
7. Double contact sealed ball bearings and moisture-resistant grease help assure long bearing life.
8. RTV-sealed lead exit holes help eliminate a major point of water entry.
9. Waterproof nitrile gasket helps prevent moisture and certain chemicals from entering the wiring assembly.
10. Easy-to-read connection leads make wiring easier.



Product Overview and Options *continued*



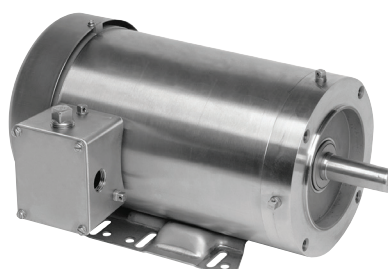
Painted
Washdown Motor

Painted Washdown Motor

U.S. MOTORS® brand painted washdown motor features USDA-approved non-toxic white epoxy paint which provides protection and resistance to chemicals, humidity and severe conditions commonly found in the food industry.

Features:

- 1/3 – 15 HP
- Three Phase, 3600, 1800 or 1200 RPM
- Single Phase, 1800 RPM
- V-ring rotating lip seal on shaft end
- 303 stainless steel shaft to resist moisture and corrosion
- Moisture resistant sealer on interior components, stator core end coils, stator bore and rotor core
- Stationary grease seal on both ends
- Gasketed conduit box to help prevent moisture from entering the motor
- Condensation holes to help condensation drain quickly
- Double contact sealed ball bearings
- Double dip and bake windings to help protect from moisture
- Footed, C-Face Footed and C-Face Footless



Stainless Steel
Washdown Motor

Stainless Steel Washdown Motor

U.S. MOTORS® brand stainless steel washdown motors are constructed of all stainless steel components to help prevent rust and corrosion. The laser-etched nameplate design provides a smooth finish to help avoid trapped contaminants.

Features:

- 1/2 – 10 HP
- Three Phase, 3600 and 1800 RPM
- Totally Enclosed Fan Cooled (TEFC) and Totally Enclosed Non-Vented (TENV)
- 303 stainless steel shaft
- Multiple stainless steel T-type drains
- Double contact sealed ball bearings
- Nitrile gasket on conduit box to help keep water away from the internal components of the motor
- RTV-sealed lead exit
- VBBX®† Bearing Isolators by Inpro/Seal®†
- Inverter Grade™ Insulation System (meets NEMA®† MG-1 part 31)

Paint-Free Washdown Motor

U.S. MOTORS® brand paint-free washdown motors are available in Three Phase, 1/2 – 10 HP, TEFC and TENV, 1800 and 1200 RPM, C-Face Footed and Footless.

Paint-free washdown motors have undergone rigorous testing in a specially designed test chamber where motors are subjected to:

- Caustic and acidic chemical sprays
- 1500 PSI high pressure, hot water
- Low pressure, hot soapy water
- Low pressure rinses

The outcome of this research is a superior washdown motor designed to minimize downtime due to motor failure in food, beverage or chemical processing plants.



Paint-Free
Washdown Motor

† All marks shown within this document are properties of their respective owners.
For more information about the U.S. MOTORS brand, visit www.usmotors.com.

Nidec Motor Corporation, © 2015; All Rights Reserved. U.S. MOTORS® is a registered trademark of Nidec Motor Corporation.
Nidec Motor Corporation trademarks followed by the ® symbol are registered with the U.S. Patent and Trademark Office.

Nidec
NIDEC MOTOR CORPORATION

8050 W. Florissant Avenue | St. Louis, MO 63136
Phone: 888-637-7333 | Fax: 866-422-7758