

# Class I Dual Drive Premium Traction Motor

4.4 kW High Efficiency Brushless PMAC Motor

## Description:

The 4.4 kW premium electric motor delivers high drive cycle efficiency and performance with an efficient brushless permanent magnet AC motor for low voltage traction applications. The IP65 sealed construction allows for use in harsh environment applications, and the TENV construction provides quiet operation less than 70 dB. An industry-compatible 4-wire sin/cos position sensor works with low voltage controllers and allows for smooth and precise vehicle operation.

## Specifications (Per 1 Motor)

**Model:** ACX-3761

**S2-5min Torque:** 70 Nm (450 A)

**Voltage:** 36-48 V

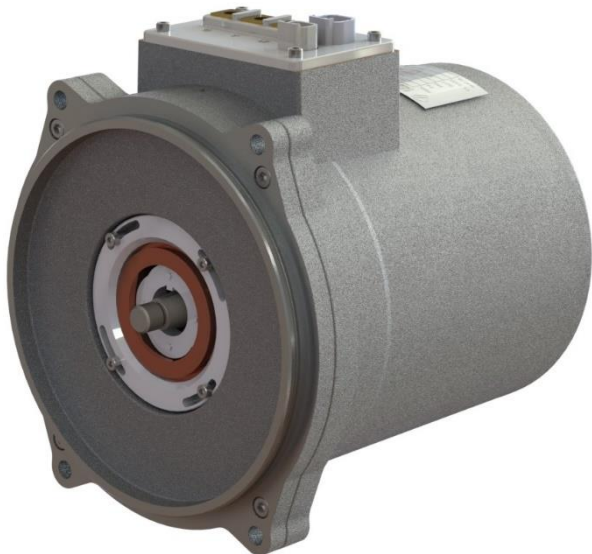
**Peak Power:** 14.3 kW

**S2-60 Power** 4.4 kW

**Max Speed:** 6,000 RPM

**Peak Efficiency:** 92%

**IP Rating:** IP65



## Features & Options:

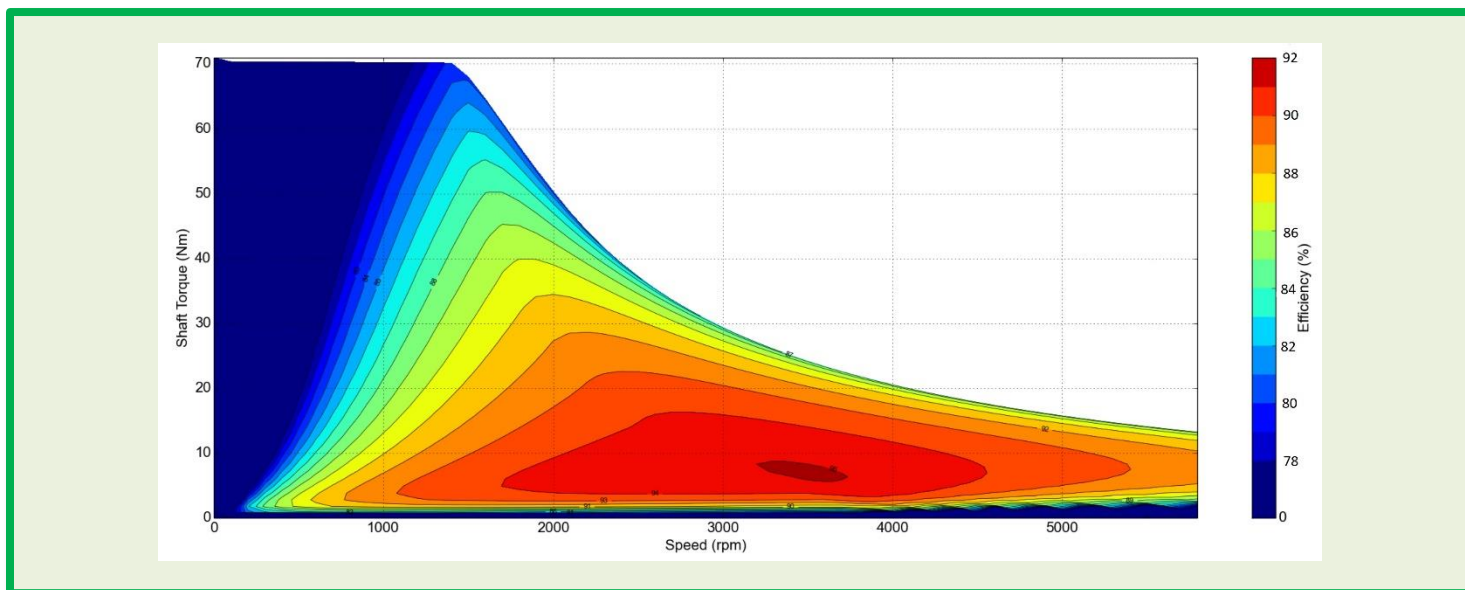
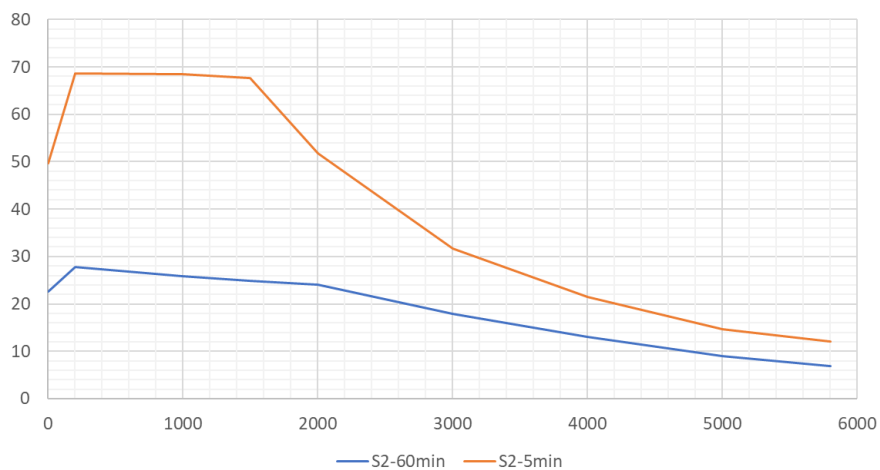
- High Efficiency brushless permanent magnet design
- Maintenance-free design for life
- IP65 TENV construction for harsh applications
- Quiet operation <70 dB
- PT-1000 or KTY temperature sensors available
- Shaft options (DIN, ANSI, male/female spline, taper)
- SAE, gearbox standard mounts, and other options
- UL 583 recognized, Class H insulation
- Industry compatible 4 wire SIN/COS position sensor
- Also works in Class II traction applications
- Scalable to 6.6kW (S2-60)

## Applications:

- Fork Truck Traction
- AWP Traction

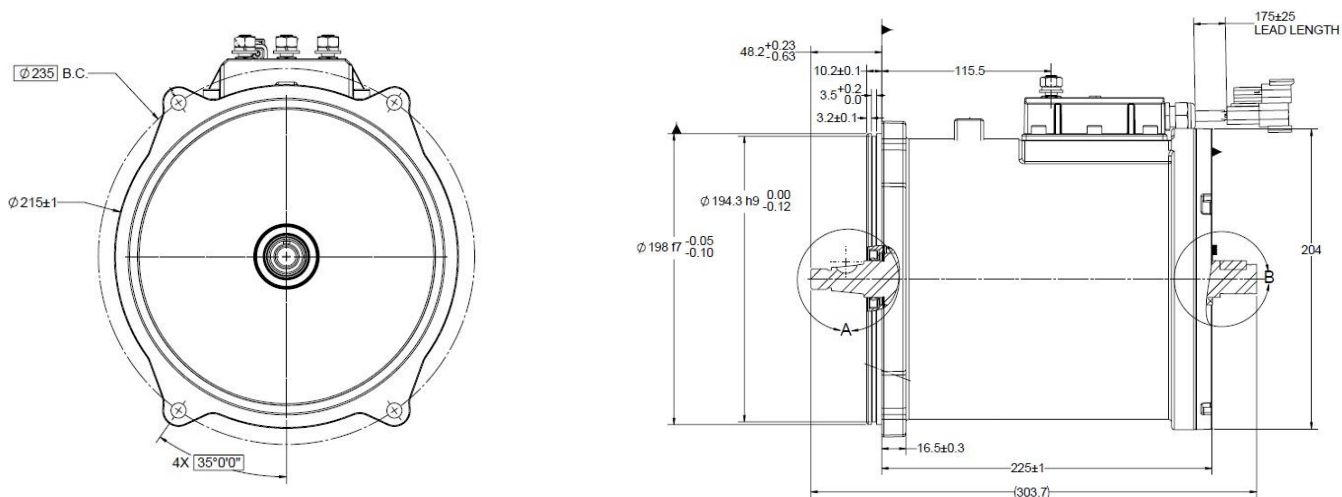
# Torque Curve

T (Nm) vs speed (rpm)



## Dimensions

Dimensions shown for 4.4 kW motor. Motors vary in dimension size.



† All marks shown within this document are properties of their respective owners. For more information, visit: <https://acim.nidec.com/drives>.

Nidec Motor Corporation, © 2020; All Rights Reserved. Imperial Electric® is a registered trademark of Nidec Motor Corporation. Nidec Motor Corporation trademarks followed by the © symbol are registered with the U.S. Patent and Trademark Office.

<https://acim.nidec.com/drives>



**Advanced Motors & Drives**

**Nidec**  
DRIVE SYSTEMS

Rev. A

4602 Emery Drive | Fort Wayne, IN 46809  
Phone: (260) 247-9920 | Fax: (260) 747-9780