

### SERVO MOTOR 115UDB300BFEFA115190-SSAA

#### 115UDB300BFEFA115190-SSAA

115 PCD EXTENDED FEF, Ø19 x 40mm OUTPUT SHAFT

(motor derated - torque output from motor limited by output shaft diameter)



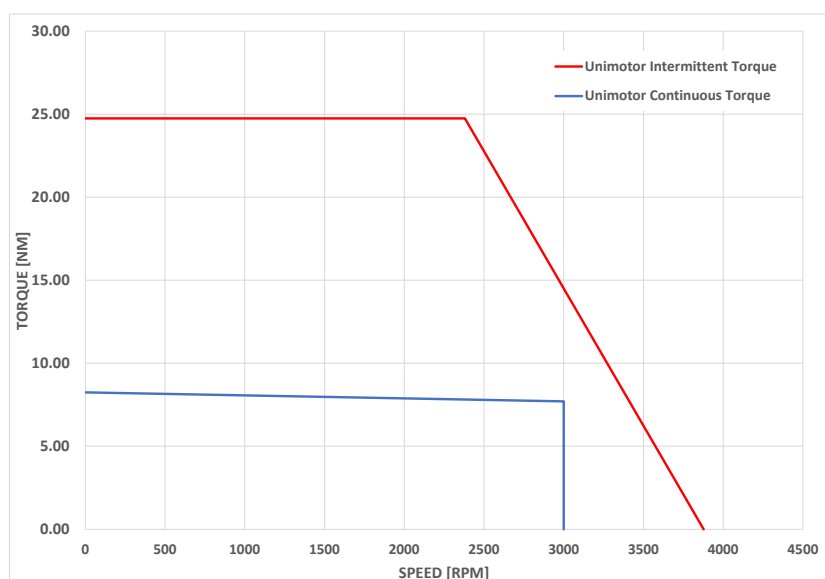
#### Definition

|                            |                      |  |
|----------------------------|----------------------|--|
| Type                       | Unimotor HD          |  |
| Frame Size (mm)            | 115                  |  |
| Voltage                    | U                    | 400 V  |
| Magnet type                | D                    | High Dynamic   |
| Frame Length               | B                    |  |
| Speed (min <sup>-1</sup> ) | 30                   | 3000   |
| Brake                      | O                    | Unbraked   |
| Connection type            | B                    | Power and Signal 90° rotatable (size 1)                            |
| Output shaft               | F                    | Full key & half key supplied in bag                                |
| Feedback device code       | EF                   | Inductive EnDat Multi-turn FS (EQI 1331)                           |
| Inertia & thermistor       | A                    | High inertia + PTC thermistor                                      |
| PCD                        | 115                  | 115 (FF 115 / 95)  |
| Shaft Diameter             | 190                  | 19j6 x 40.0 (torque output from motor limited by output shaft dia) |
| Fan Box                    | -                    |  |
| Insulation class           | F                    |  |
| UL Motor / UL Stator       | UL Motor / UL stator |  |

#### Nominal characteristics

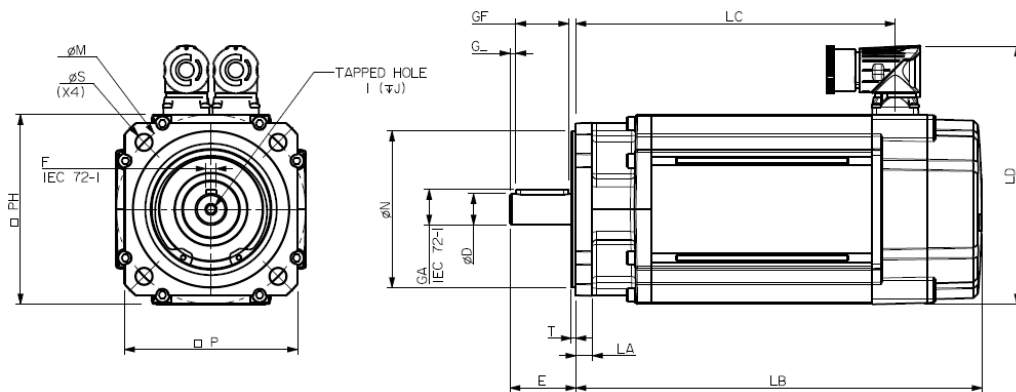
|                                   |       |                            |      |
|-----------------------------------|-------|----------------------------|------|
| Motor Ambient Temperature (°C)    | 40    | Drive Fsw (kHz)            | 12   |
| Motor Stall Torque (N.m)          | 8.25  | Stall Current (A)          | 5.2  |
| Rated Torque (N.m)                | 7.7   | Nominal Current (A)        | 4.81 |
| Motor Peak Torque (N.m)           | 24.75 | Kt (Nm/A)                  | 1.6  |
| Rated Power (kW)                  | 2.4   | Ke (V/kmin <sup>-1</sup> ) | 98.0 |
| Winding Thermal Time Constant (s) | 164   | R (ph-ph) (Ohm)            | 1.9  |
| Number of Poles                   | 10    | L (ph-ph) (mH)             | 18.0 |
| Typical Cogging (N.m)             | 0.15  |                            |      |
| Inertia (kg.cm <sup>2</sup> )     | 4.41  | Weight (kg)                | 6.9  |
| Ingress Protection Level (IP)     | IP65  |                            |      |

#### Torque / speed graph



### SERVO MOTOR 115UDB300BFEFA115190-SSAA

#### Motors (° & mm)

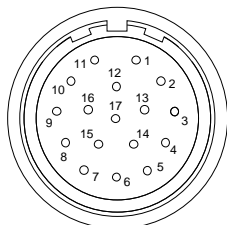


|    |                          |          |
|----|--------------------------|----------|
| LB | Total length             | 226.5    |
| LC | Power connector position | 186.7    |
| LA | Flange thickness         | 10.1     |
| T  | Register Length          | 2.8      |
| N  | Register Diameter        | 95.0     |
| LD | Connector overall height | 156.5    |
| P  | Flange Square            | 105.0    |
| S  | Fixing Hole Diameter     | 10.0     |
| M  | Fixing hole PCD          | 115.0    |
| PH | Motor Housing Width      | 115.0    |
| D  | Shaft Diameter           | 19j6     |
| E  | Shaft Length             | 40.0     |
| GA | Key Height               | 21.5     |
| GF | Key Length               | 32.0     |
| G  | Key to Shaft End         | 3.6      |
| F  | Key Width                | 6.0      |
| I  | Tapped Hole Thread Size  | M6 x 1.0 |
| J  | Tapped Hole Depth        | 17.0     |
|    | Mounting Bolt            | M8       |

#### Motor electrical interface Connectors option:

##### Feedback device code: EF - Inductive EnDat Multi-turn FS (EQI 1331)

- |                        |             |
|------------------------|-------------|
| 1 - Thermistor -       | 10 -        |
| 2 - Thermistor +       | 11 - Data + |
| 3 - Screen (if fitted) | 12 - Data - |
| 4 -                    | 13 -        |
| 5 -                    | 14 -        |
| 6 -                    | 15 -        |
| 7 -                    | 16 - Power  |
| 8 - Clock +            | 17 - 0 V    |
| 9 - Clock -            | Screen      |



##### Connection type: B - Power and Signal 90° rotatable (size 1)

