

### SERVO MOTOR – 142UDA306BAECA165240-JSHJ

## 142UDA306BAECA165240-JSHJ

HIGH INERTIA



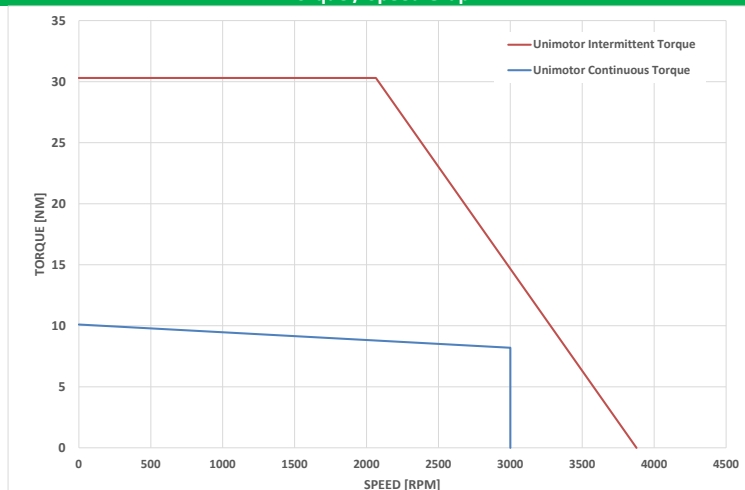
### Definition

Type	Unimotor HD	
Motor frame size (mm)	142	
Voltage (Vdc)	U	400V
Magnet type	D	High Dynamic
Frame Length	A	
Speed (min <sup>-1</sup> )	30	3000
Brake	6	Braked
Connection type	B	Power and Signal size 1 90° rotatable
Output shaft	A	With output key
Feedback device code	EC	Inductive EnDat SinCos Multi-Turn (EQI 1331)
Inertia & thermistor	A - JSHJ	High inertia + PTC thermistor
PCD	165	165 (FF 165/130)
Shaft Diameter	240	24j6 x 50
Fan Box	-	
Insulation class	F	
UL Motor / UL Stator	UL Motor / UL Stator	

### Motor Characteristics

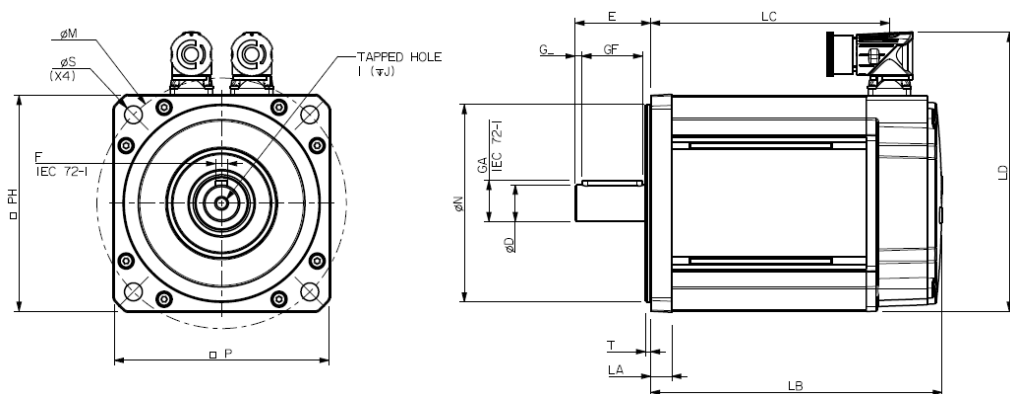
Motor Ambient Temperature (°C)	40	Drive Fsw (kHz)	12
Continuous Stall Torque (Nm)	10.1	Stall Current (A)	6
Rated Torque (Nm)	8.2	Nominal Current (A)	5.12
Motor Peak Torque (Nm)	30.3	Kt (Nm/A) @cold	1.6
Rated Power (kW)	2.6	Ke (V/kmin-1) @cold	98.0
Winding Thermal Time Constant (s)	235	R (ph-ph) (Ohm) @ambient	1.5
Number of Poles	10	L (ph-ph) (mH)	18.1
Typical Cogging (Nm)	0.15		
Inertia (kg.cm <sup>2</sup> )	23.91	Weight (kg)	14.1
Ingress Protection Level (IP)	IP65		
Brake	Type 6	Static Torque (Nm)	16.0
Release Time (ms)	110	Backlash (°)	3
Brake Supply Voltage (V)	24	Brake Coil Power (W)	23

### Torque / Speed Graph



### Motor Dimensions (mm)

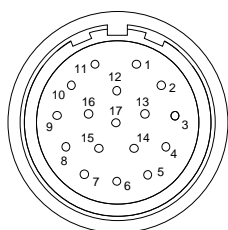
### SERVO MOTOR – 142UDA306BAECA165240-JSHJ



LB	Total length	252.5
LC	Power connector position	218.0
LA	Flange thickness	14.0
T	Register Length	3.4
N	Register Diameter	130.0
LD	Overall height	183.5
P	Flange Square	142
S	Fixing Hole Diameter	12
M	Fixing hole PCD	165
PH	Motor Housing Width	142
D	Shaft Diameter	24j6
E	Flange to Shaft End	50.0
GA	Key Height	27.0
GF	Key Length	40.0
G	Key to Shaft End	3.0
F	Key Width	8.0
I	Tapped Hole Thread Size	M8 x 1.25
J	Tapped Hole Depth	20.0
	Mounting Bolt	M10

### Connectors

Feedback device code: EC - Inductive EnDat SinCos Multi-Turn (EQI 1331)



- |                        |               |
|------------------------|---------------|
| 1 - Thermistor         | 10 - COS      |
| 2 - Thermistor         | 11 - DATA     |
| 3 - Screen (if fitted) | 12 - DATA/    |
| 4 - -                  | 13 - COS/     |
| 5 - -                  | 14 - SIN      |
| 6 - -                  | 15 - SIN/     |
| 7 - -                  | 16 - Power    |
| 8 - Clock +            | 17 - 0V       |
| 9 - Clock -            | Body - Screen |

Connection type: B – Power and Signal size 1 90° rotatable

