

# KI-Compact 485 Adapter Installation Sheet

## 1 Introduction

The KI-Compact 485 Adapter is intended to be used with Digitax HD drives in place of the KI-Compact Display. It provides a single EIA-485 serial communication port via an 8P8C connector. This serial port can be used to connect a remote keypad to the drive, or it can be used to provide a PC connection to the drive with the addition of a USB to EIA-485 communications cable (part number 4500-0096).

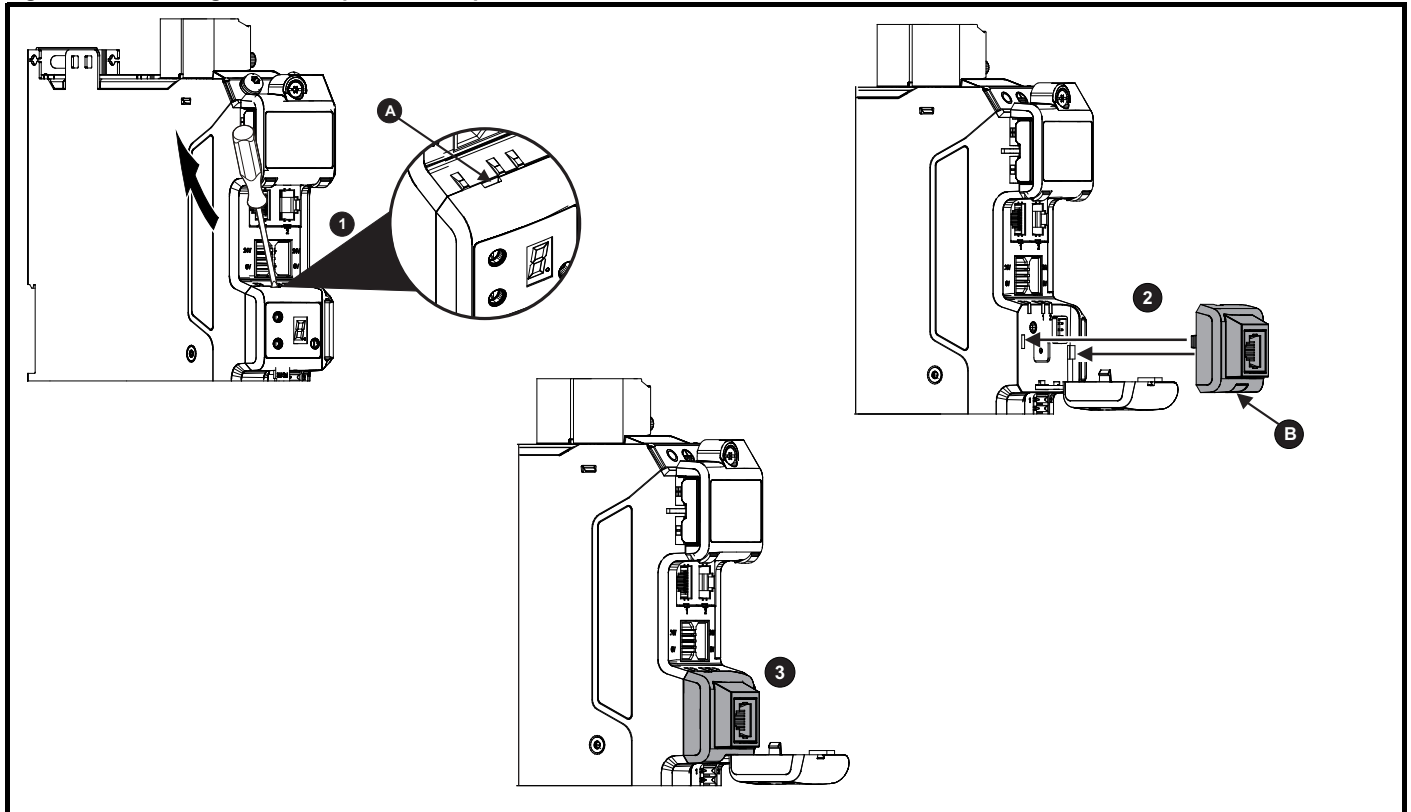


The KI-Compact 485 Adaptor is intended for use only when attached to a Digitax HD drive in the manner shown in this installation sheet. Operation in any other fashion may cause a hazard and invalidate the warranty.

## 2 Installation

The KI-Compact 485 Adapter can be permanently fitted to the drive in place of the KI-Compact Display, or it can be temporary fitted to the drive without completely removing the KI-Compact Display from the drive.

**Figure 2-1 Installing the KI-Compact 485 Adapter**



1. If a KI-Compact Display is fitted, unclip and pull the display away from the front cover. The tether keeps the display associated to the drive and should not be removed unless the KI-Compact 485 Adapter is to be fitted permanently. A small terminal screwdriver maybe required to unclip the display. A slot in the drive plastic is provided for this purpose (**A**).
2. Align the KI-Compact 485 Adaptor with the display housing noting the position of the notch (See view **B** above). If a KI-Compact Display is present, install the KI-Compact 485 Adapter over the display tether.
3. Push the KI-Compact 485 Adapter into the housing until it clicks into place.

To remove the KI-Compact 485 Adapter, follow the instructions for removing the KI-Compact Display in point 1 above.

### NOTE

The KI-Compact 485 Adapter can be installed / removed while the drive is powered up and running a motor, providing a remote keypad is not connected to the port on the KI-Compact 485 Adapter and operating in keypad mode.



0478-0751-01

# 3      Technical Specification

**Node Address:** 1 - 16

*Keypad Port Serial Address* (11.090) defines the node address for the KI-Compact 485 Adapter. If the node address is changed, then *Reset Serial Communications* (11.020) must be set to On (1) to make the change of node address take effect.

**Baud Rate:** 115200 baud

**Serial Communication Mode:** 8 bits, 1 stop bit, no parity, modified register addressing mode.

If using Modbus RTU, the format of the register address is (Menu x 256) + Parameter number - 1.

**Table 3-1    Pinout**

Pin	Function
1	120 Ω Termination resistor
2	RX TX
3	0 V
4	+24 V (100 mA)
5	Not connected
6	TX enable
7	RX\ TX\
8	RX\ TX\ (if termination resistors are required, link to pin 1)

