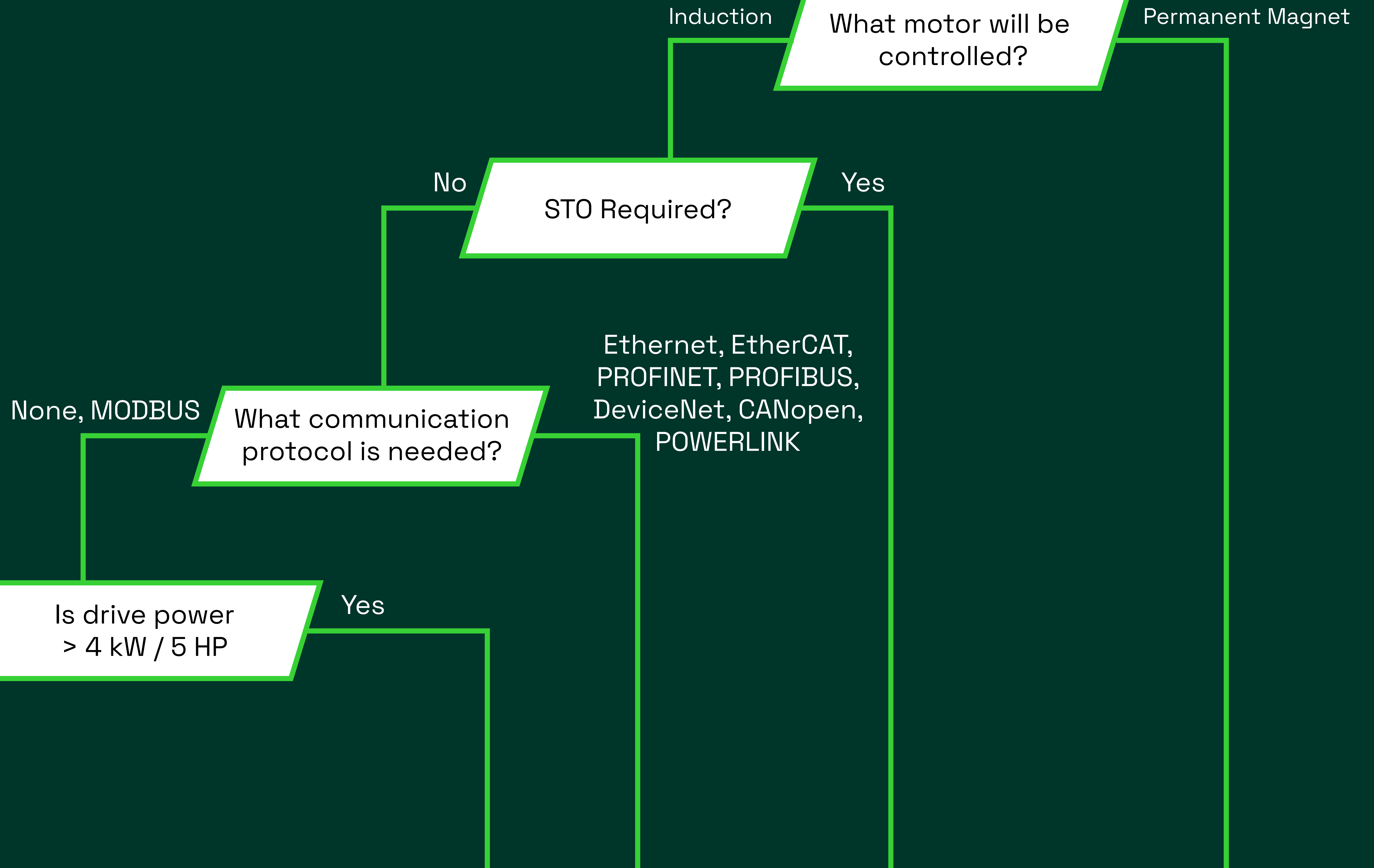


Nidec

Drives

Commander drive selection tool

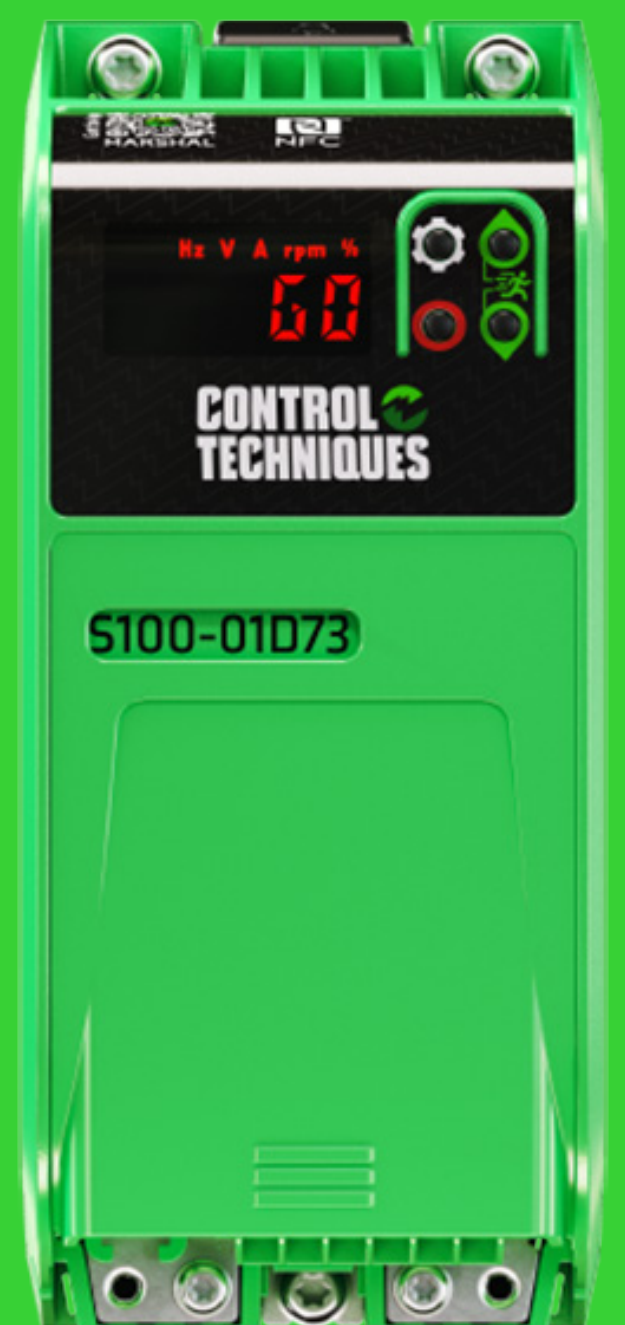


Commander S100

Commander S

Cost Effective,
Easy to Install,
Easy to Use,
Reliable (5 Year Warranty)

Max Power = 4 kW / 5 HP



Commander C200

Commander C300

Commander C300 PM

Commander C

Flexible and adaptable to the application,
All essential features built in,
Compact Design,
Reliable (5 Year Warranty)

Max Power = 132 kW / 200 HP





AC Drive Selection Chart

3 Phase Induction Motors to 5 HP

Drives

Open Chassis / IP20

NEMA / UL

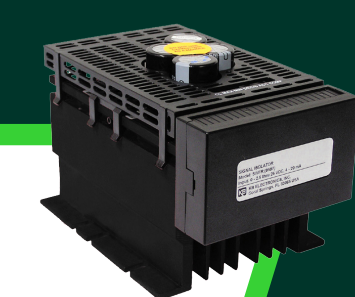
Enclosure Type

Isolation Required?

No

Yes

KBVF 3G



KBVF 3G + SIVFR



Keypad Required?

No

Yes

Ethernet, PLC or DB Required?

No

Yes

Commander S100



Closed Loop Speed Feedback Required?

No

Yes

Commander C200
Commander C300



Digitax HD
Unidrive M600 + SI-Encoder
Unidrive M70x



Closed Loop Speed Feedback Required?

No

Yes

KBWA / KBMA
Commander C200 & C300
+ Conduit Box



Unidrive M600 + SI-Encoder
Unidrive M70x
+ Conduit Box



KBAC / KBDA



KBAC + SIAC
KBDA + IODA



Isolation Required?

No

Yes



NEMA 1 or NEMA 4X

NEMA 1

NEMA 4X





AC Drive Selection Chart

3 Phase Permanent Magnet Motors to 5 HP

Drives

