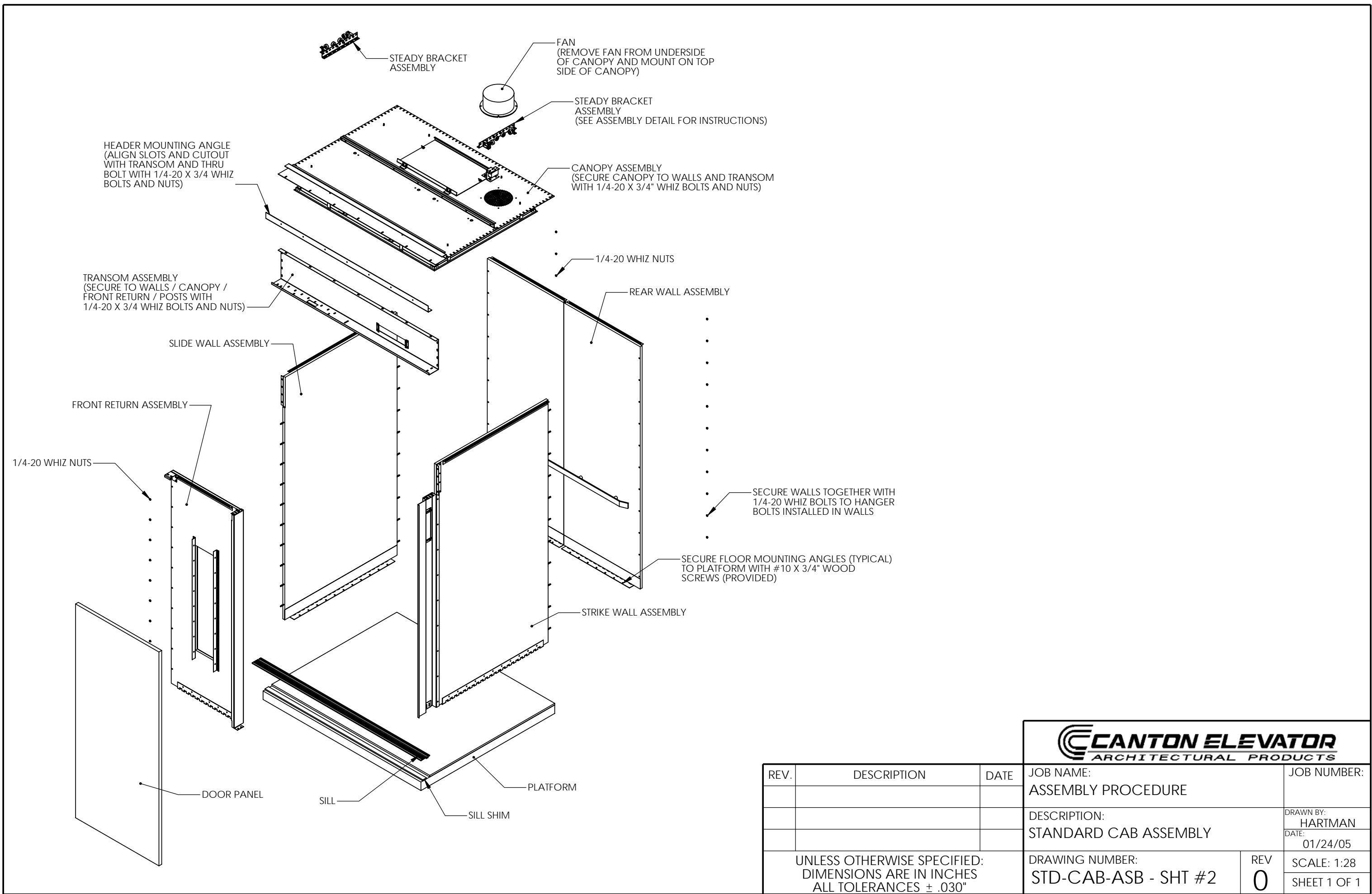
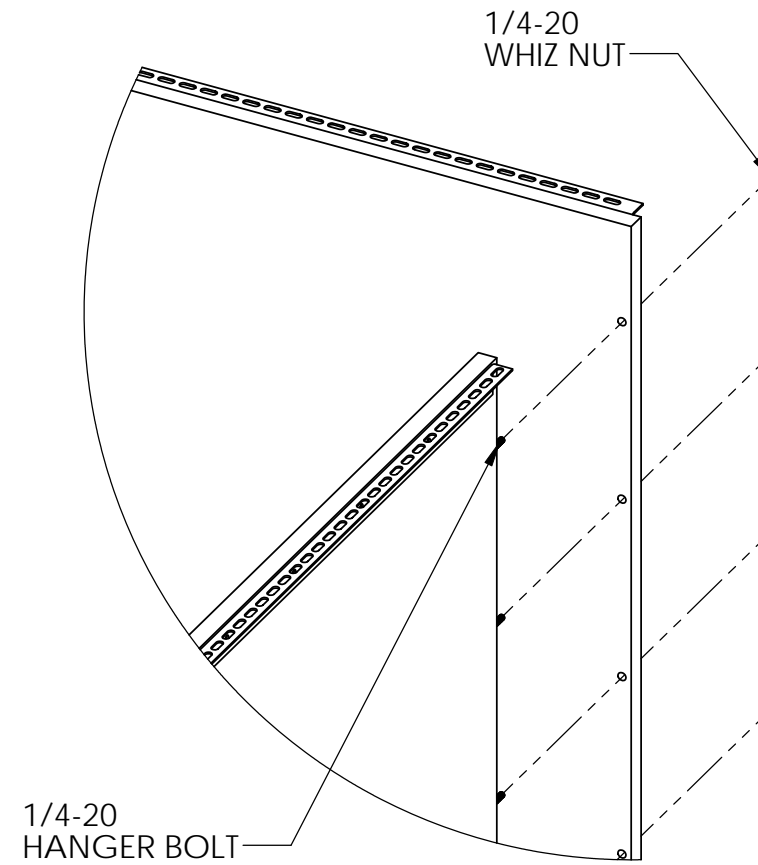
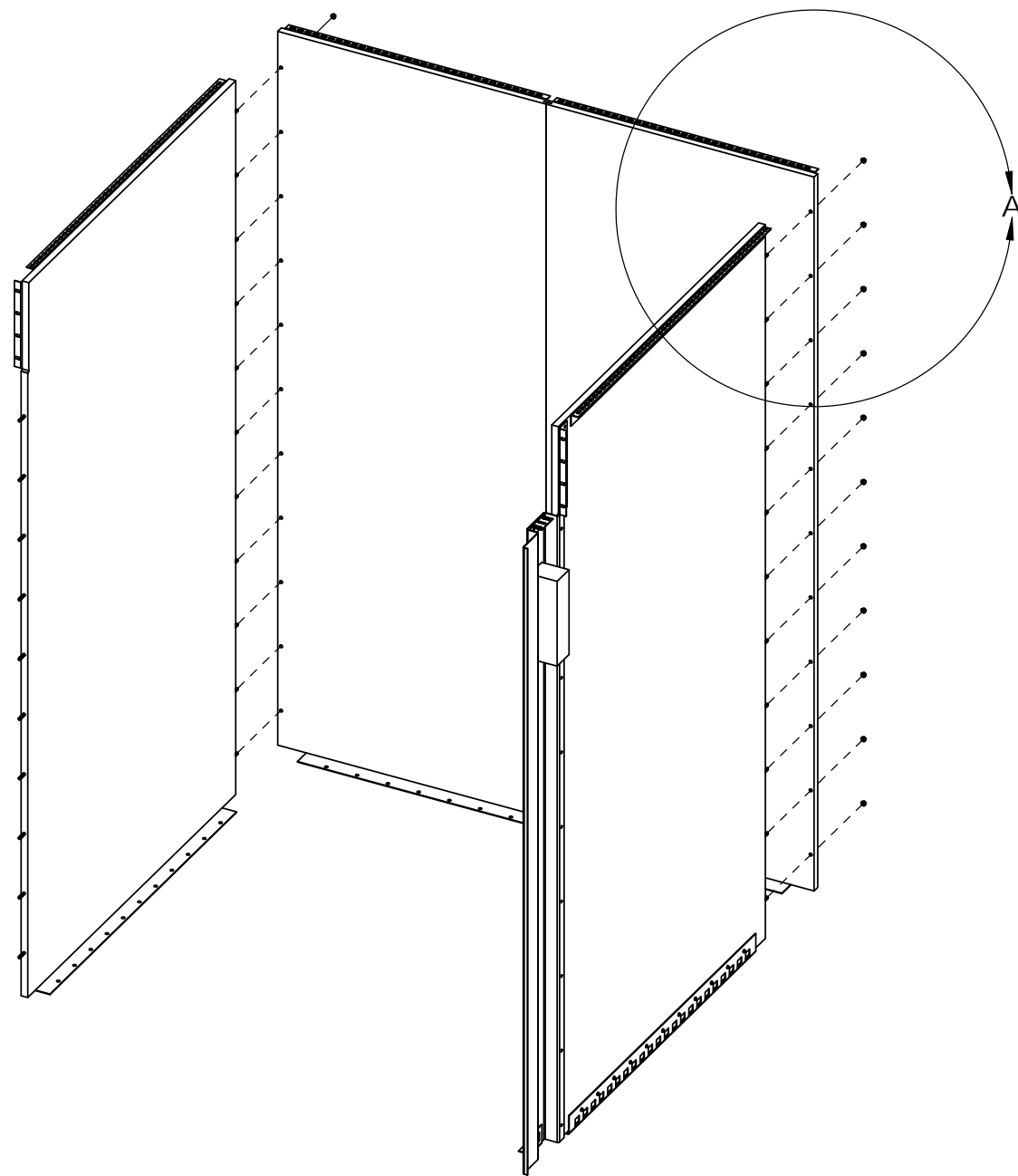


REV.	DESCRIPTION	DATE	JOB NAME:	JOB NUMBER:
			ASSEMBLY PROCEDURE	
			DESCRIPTION:	DRAWN BY:
			STANDARD CAB ASSEMBLY	HARTMAN
				DATE:
				01/24/05
			DRAWING NUMBER:	REV
			STD-CAB-ASB - SHT #1	0
				SCALE: 1:16
				SHEET 1 OF 1

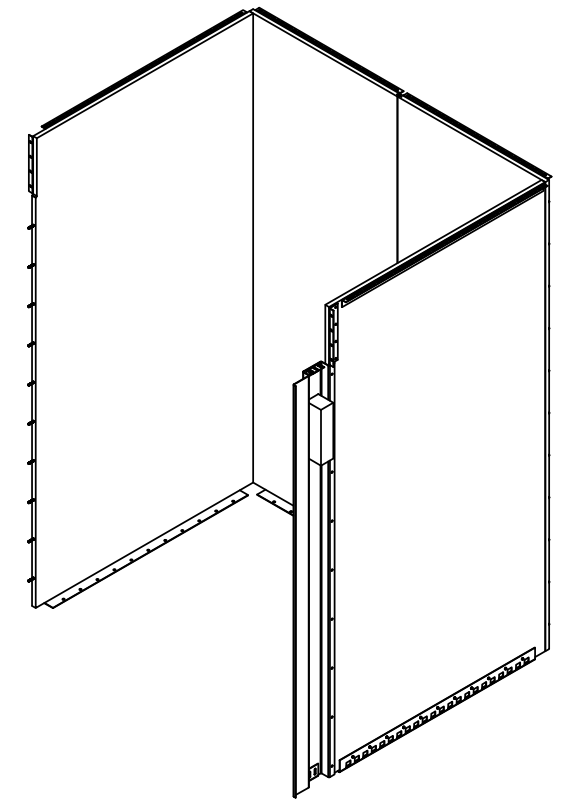
UNLESS OTHERWISE SPECIFIED:
DIMENSIONS ARE IN INCHES
ALL TOLERANCES $\pm .030$ "



REV.	DESCRIPTION	DATE	JOB NAME:	JOB NUMBER:
			ASSEMBLY PROCEDURE	
			DESCRIPTION:	DRAWN BY:
			STANDARD CAB ASSEMBLY	HARTMAN
				DATE:
				01/24/05
			DRAWING NUMBER:	REV
			STD-CAB-ASB - SHT #2	0
			UNLESS OTHERWISE SPECIFIED: DIMENSIONS ARE IN INCHES ALL TOLERANCES ± .030"	SCALE: 1:28
				SHEET 1 OF 1



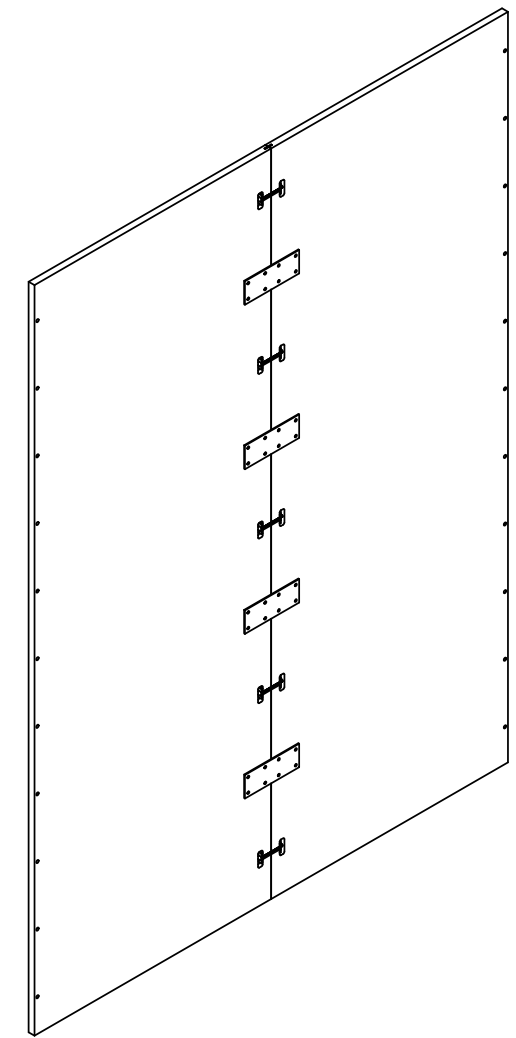
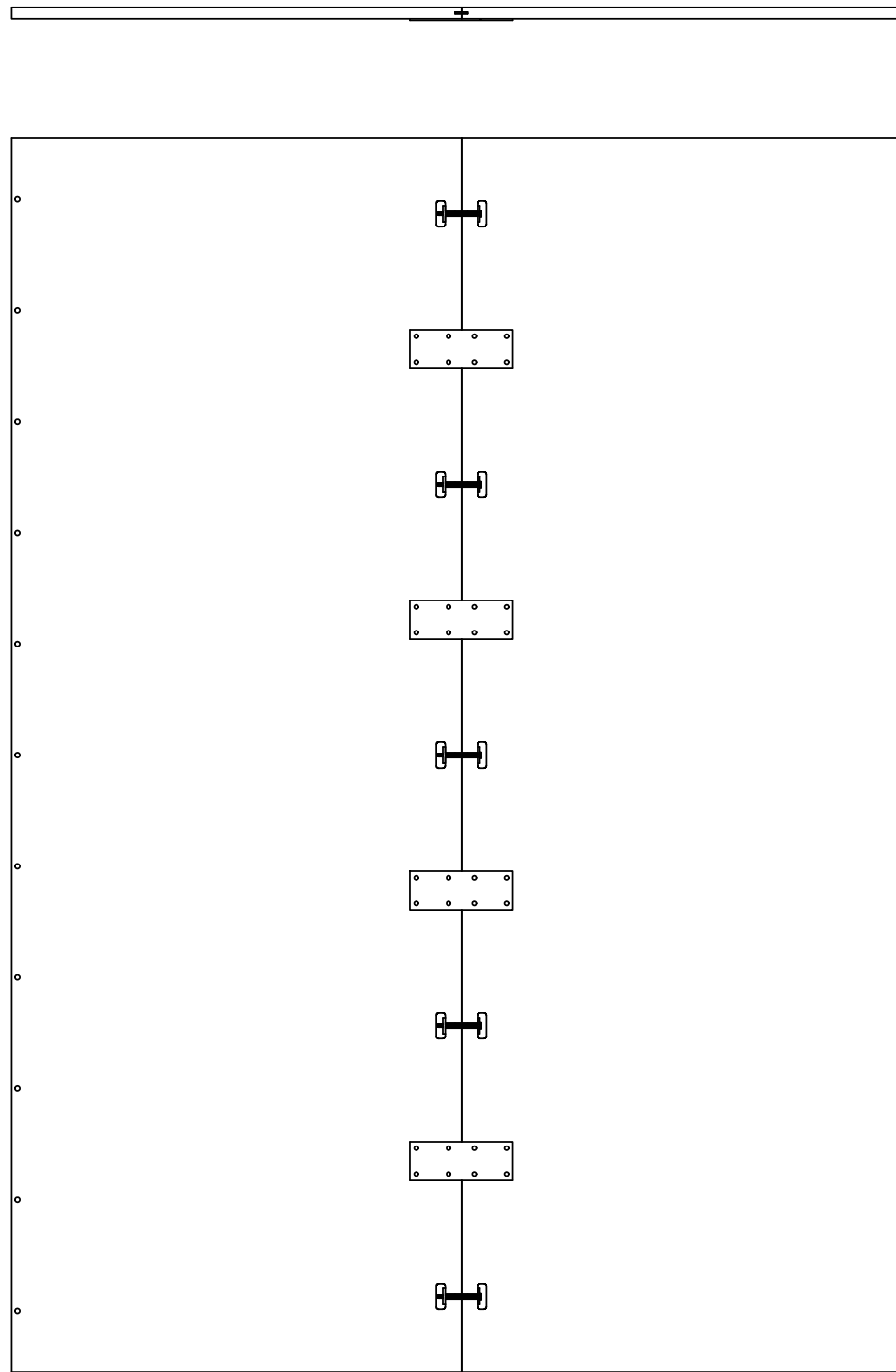
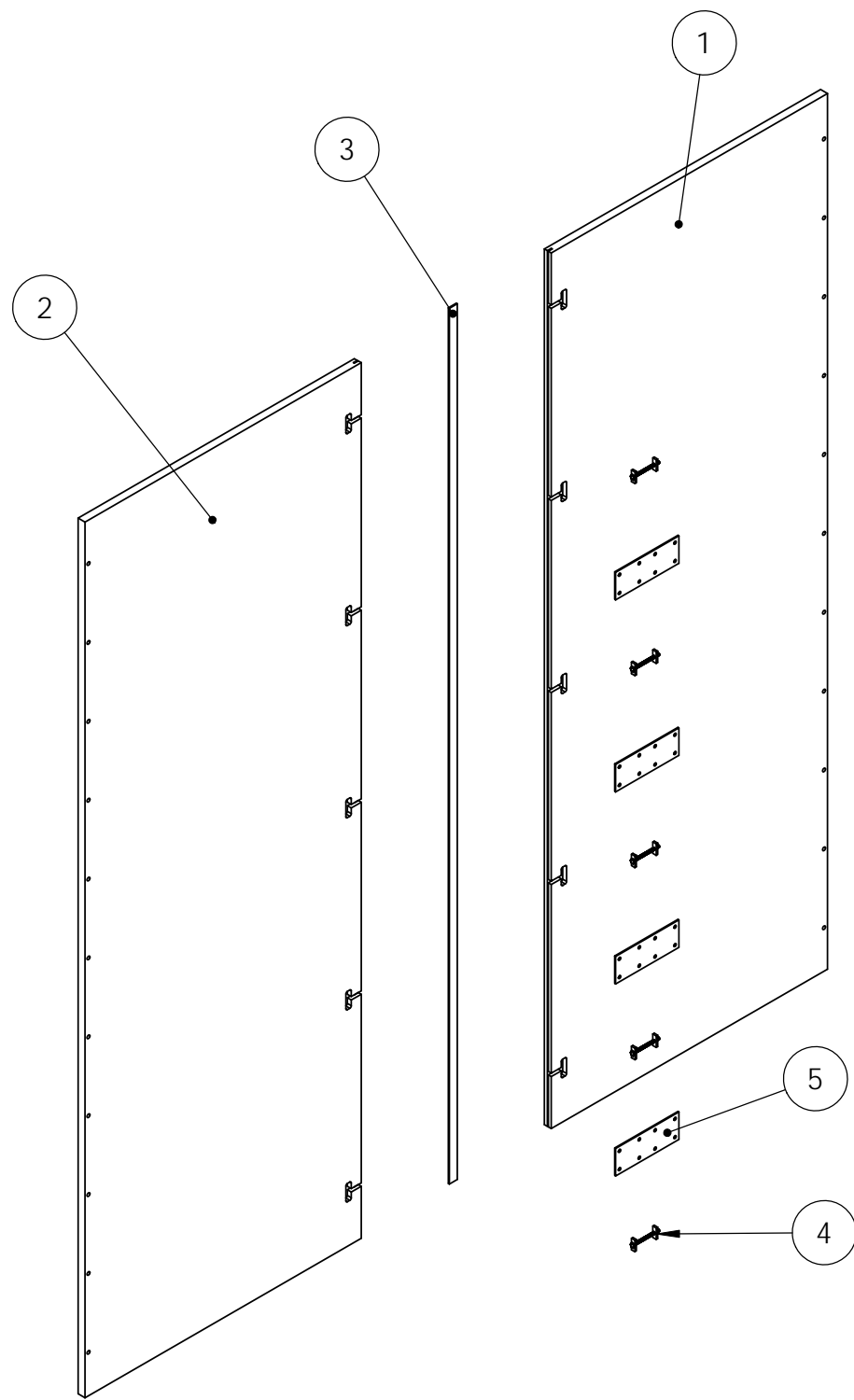
DETAIL A
SCALE 1 : 8



INSTALLATION INSTRUCTIONS:

- ALIGN HANGER BOLTS ON STRIKE WALL WITH HOLES ON FACE OF REAR WALL AND PUSH TOGETHER. SECURE WITH 1/4-20 WHIZ NUTS.
- REPEAT OPERATION WITH SLIDE WALL.
- SECURE WALLS TO PLATFORM USING #10 X 3/4" FLAT HEAD SCREWS

CANTON ELEVATOR ARCHITECTURAL PRODUCTS		
ORIGINAL MODEL	08/18/09	PRITCHARD
JOB NAME:	-	JOB NUMBER: -
DESCRIPTION:	STANDARD WOOD CORE WALL ASM	DRAWN BY: - DATE: -
DRAWING NUMBER:	REV 0	SCALE: 1:32 SHEET 1 OF 1
WC-WALL-ASM		

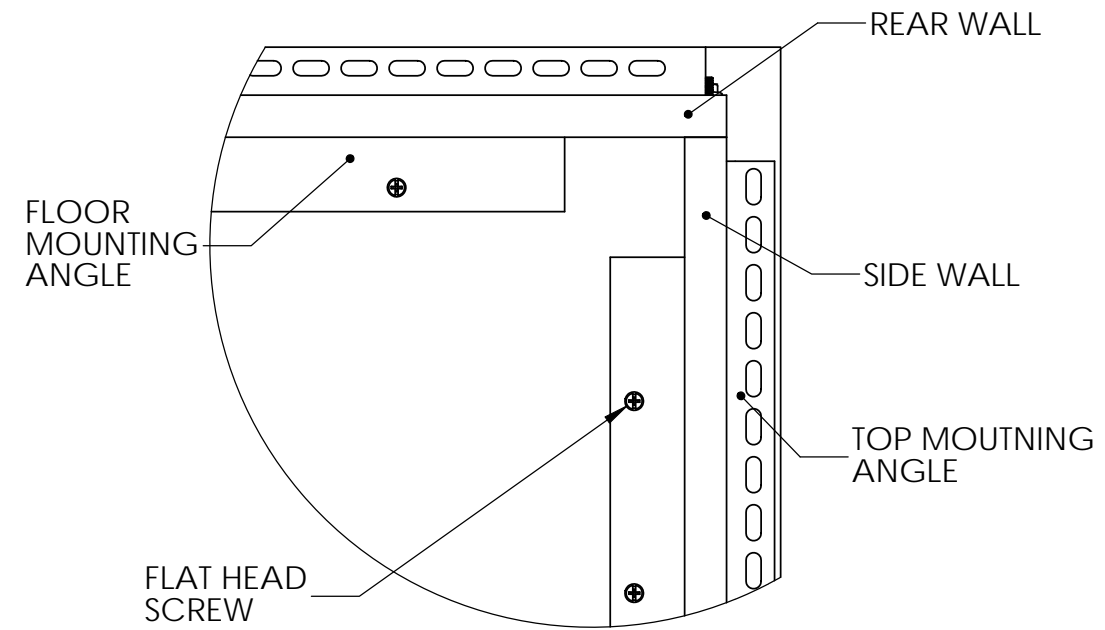
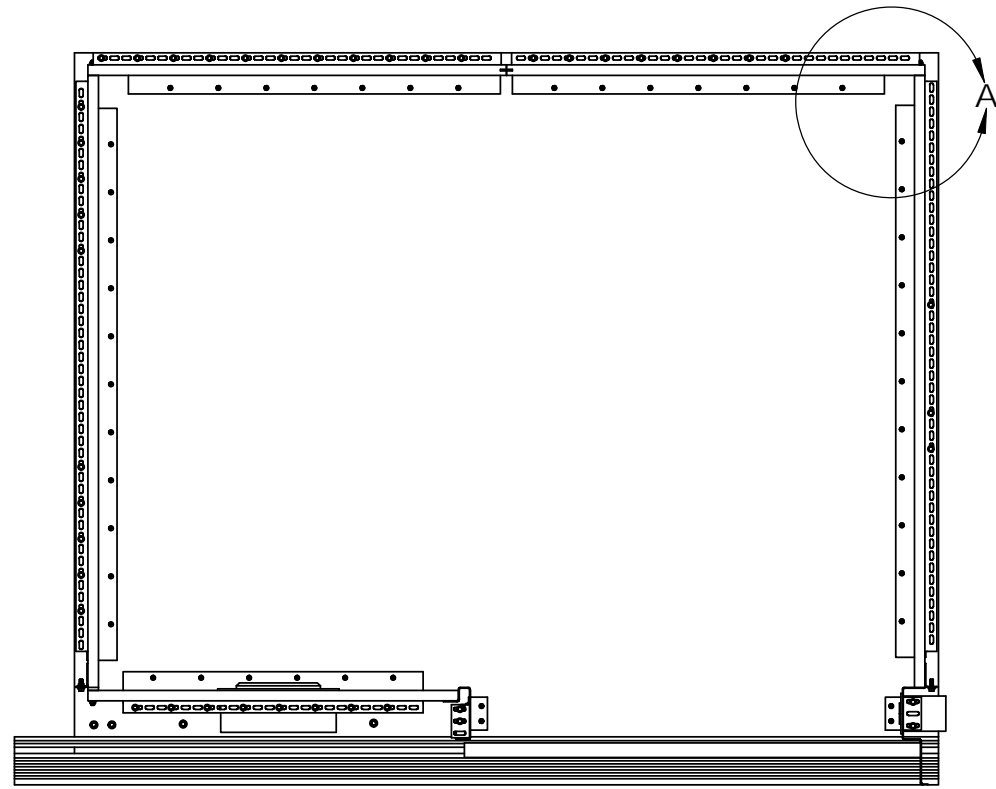


ITEM NO.	QTY.	PART NUMBER	DESCRIPTION
1	1	WA-RR-	WOOD CORE WALL REAR RIGHT
2	1	WA-RL-	WOOD CORE WALL REAR LEFT
3	1	SPL-125-96	SPLINE 1/8" X 95 3/4"
4	5	CON-517	DRAW BOLT JOINT FASTENER 3 1/2"
5	4	WA-SP-1	WALL SPLICE PLACE

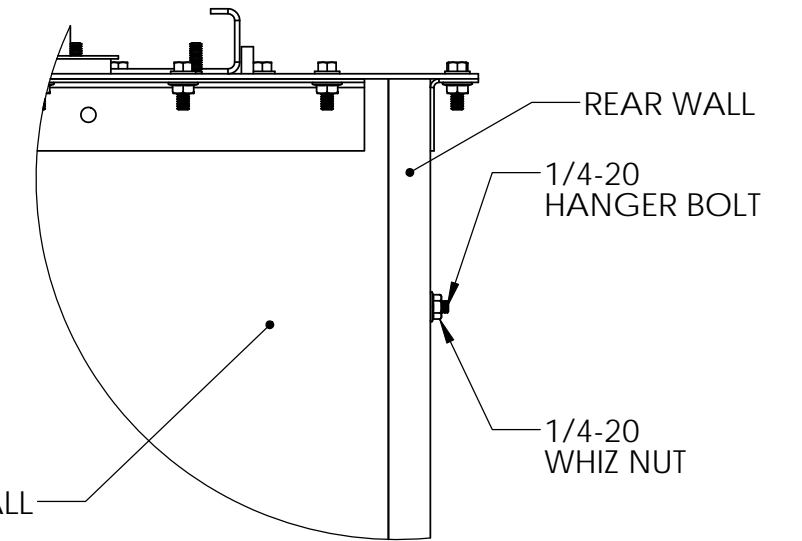
ASSEMBLY INSTRUCTIONS:

- INSERT SPLINE INTO THE RECESSED POCKET ALONG VERTICAL EDGE OF EITHER WALL SECTION.
- ALIGN RECESSED POCKET IN OTHER WALL WITH SPLINE PROJECTING OUT OF THE FIRST WALL AND PRESS TOGETHER.
- LOOSEN DRAW BOLTS AND INSERT IN ROUTED POCKETS LOCATED ON BACK SIDE OF WALL.
- TIGHTEN DRAW BOLTS TO PULL WALLS TOGETHER. USE CAUTION NOT TO OVER TIGHTEN.
- SECURE SPLICE PLATES TO BACK SIDE OF WALL OVER THE SEAM USING THE PROVIDED WOOD SCREWS.

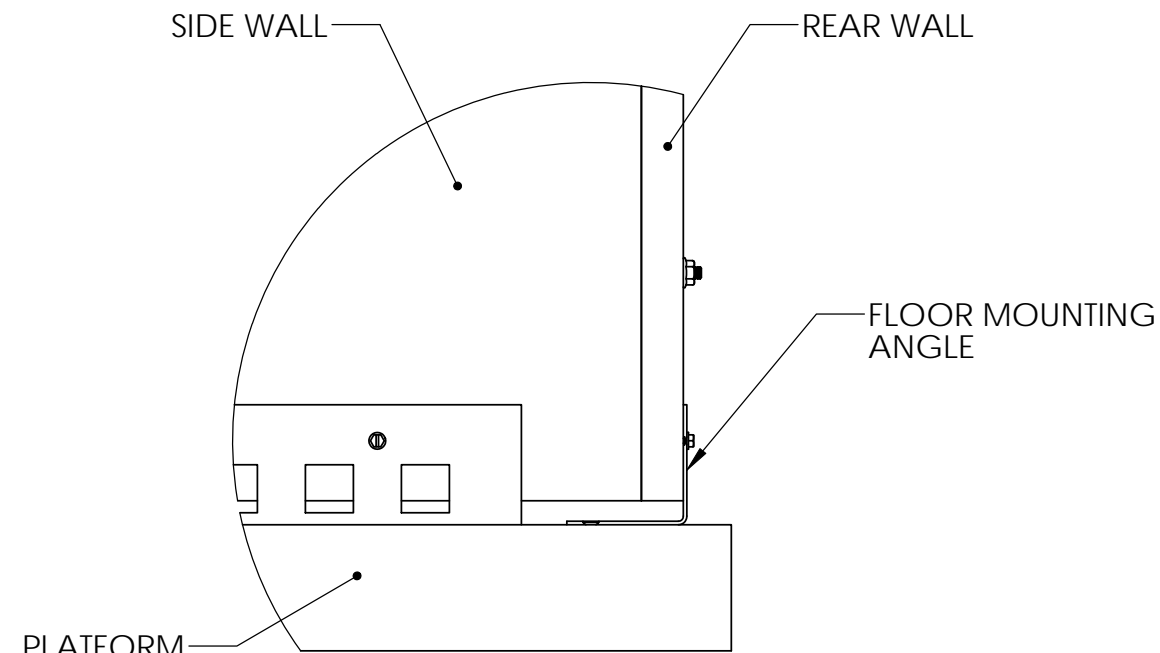
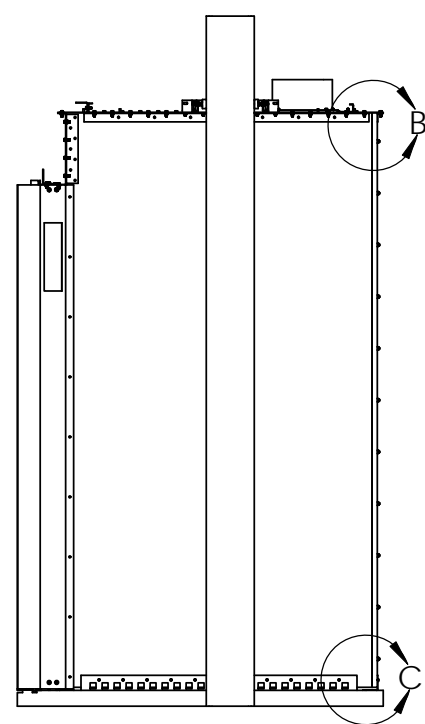
ORIGINAL MODEL	08/17/09	PRITCHARD
JOB NAME:	-	JOB NUMBER:
DESCRIPTION:	SPLIT WOOD WALL ASSEMBLY	DRAWN BY:
DRAWING NUMBER:	?	DATE:
	REV 0	SCALE: 1:1
		SHEET 1 OF 1



DETAIL A
SCALE 1 : 4

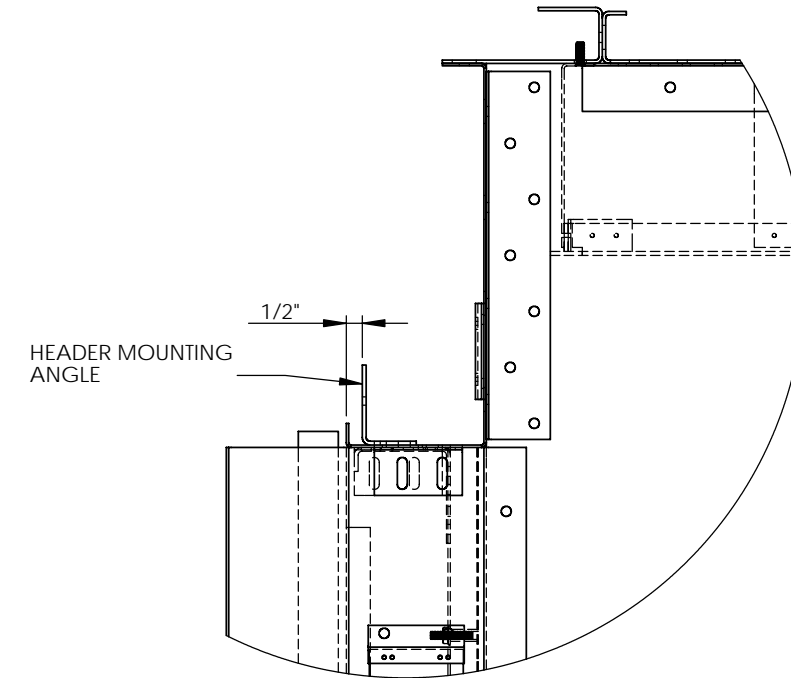
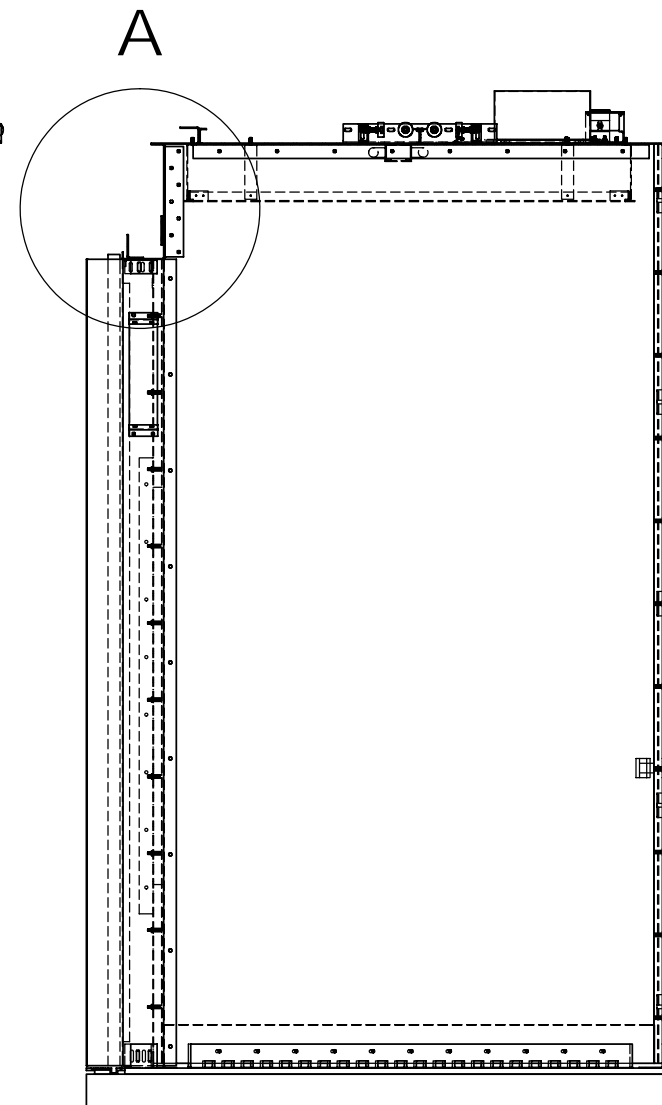
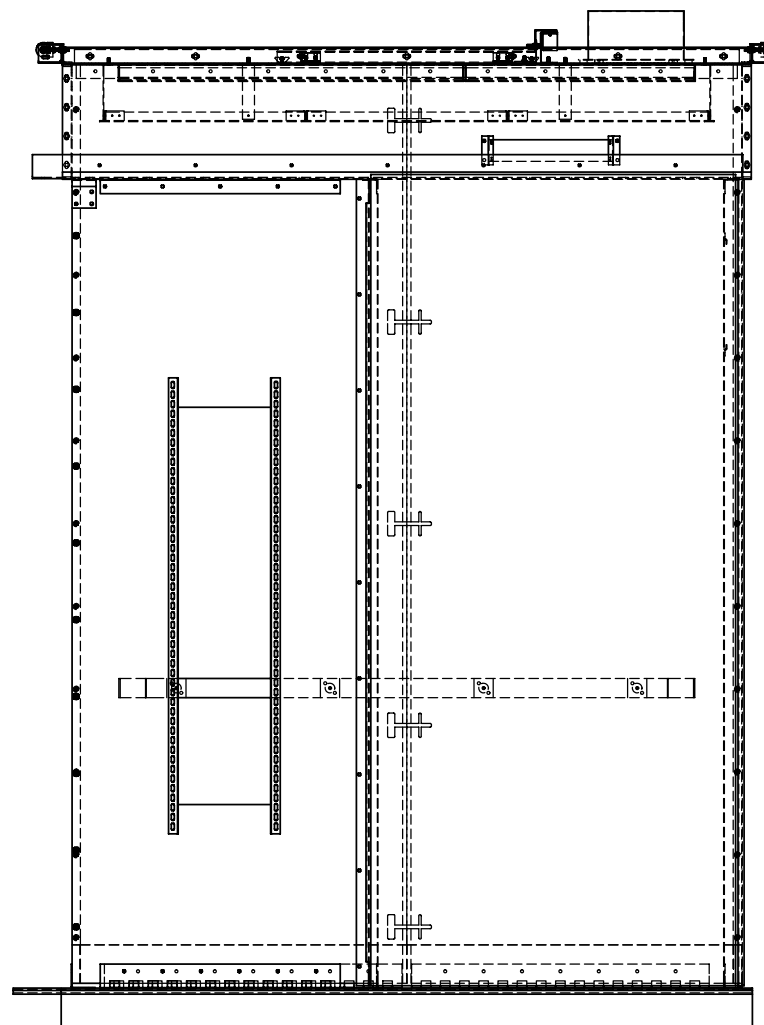
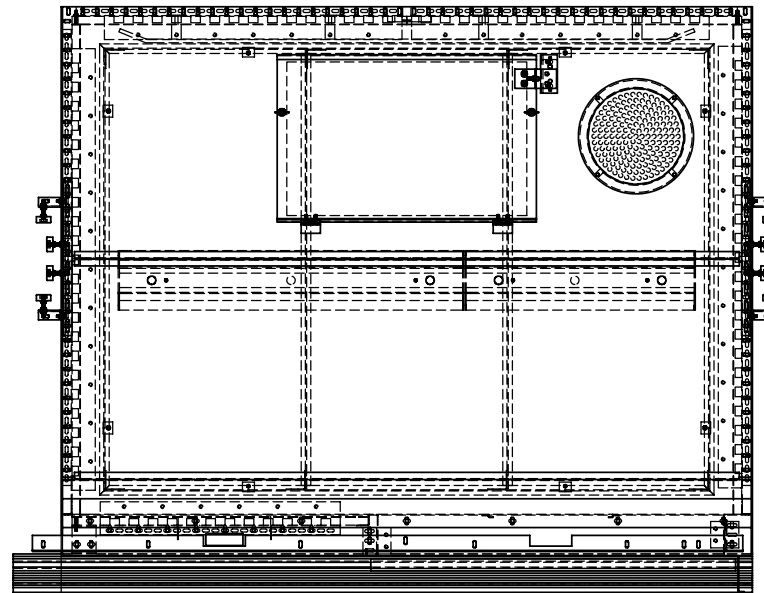


DETAIL B
SCALE 1 : 4



DETAIL C
SCALE 1 : 4

CANTON ELEVATOR ARCHITECTURAL PRODUCTS		
ORIGINAL MODEL	07/27/09	PRITCHARD
JOB NAME:	JOB NUMBER:	
-	-	
DESCRIPTION:	DRAWN BY:	
STANDARD WOOD CORE WALL ASM - 2	-	
	DATE:	
	-	
DRAWING NUMBER:	REV	SCALE: 1:32
CAB-ASB	0	SHEET 1 OF 1



A (1 : 6)



REV.	DESCRIPTION	DATE	JOB NAME:	JOB NUMBER:
			ASSEMBLY PROCEDURE	
			DESCRIPTION:	DRAWN BY:
			STANDARD CAB ASSEMBLY	HARTMAN
				DATE:
				01/24/05
			DRAWING NUMBER:	SCALE: 1:20
			STD-CAB-ASB - SHT #3	SHEET 1 OF 1
			UNLESS OTHERWISE SPECIFIED: DIMENSIONS ARE IN INCHES ALL TOLERANCES ± .030"	REV 0