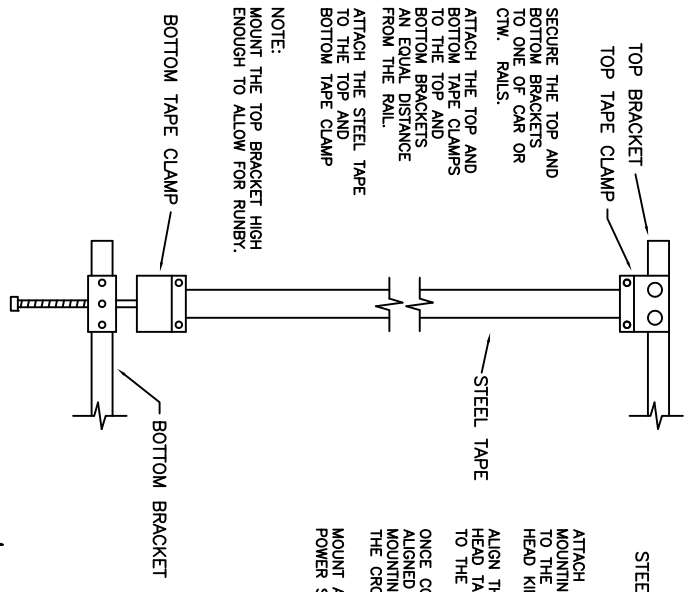


SECURE THE TOP AND BOTTOM BRACKETS TO ONE OF CAR OR C/W, RAILS.

ATTACH THE TOP AND BOTTOM TAPE CLAMPS TO THE TOP AND BOTTOM TAPE AND BOTTOM BRACKETS TO THE TOP AND BOTTOM BRACKETS AN EQUAL DISTANCE FROM THE RAIL.

ATTACH THE STEEL TAPE TO THE TOP AND BOTTOM TAPE CLAMP

NOTE:
MOUNT THE TOP BRACKET HIGH ENOUGH TO ALLOW FOR RUNBY.

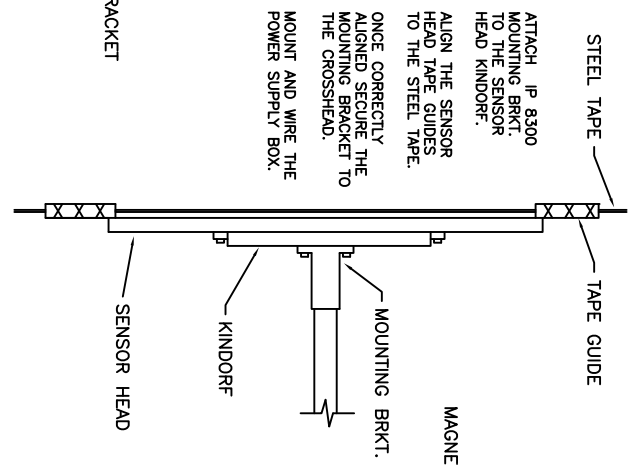


ATTACH IP 8300 MOUNTING BRKT. TO THE SENSOR HEAD KINDORF.

ALIGN THE SENSOR HEAD TAPE GUIDES TO THE STEEL TAPE.

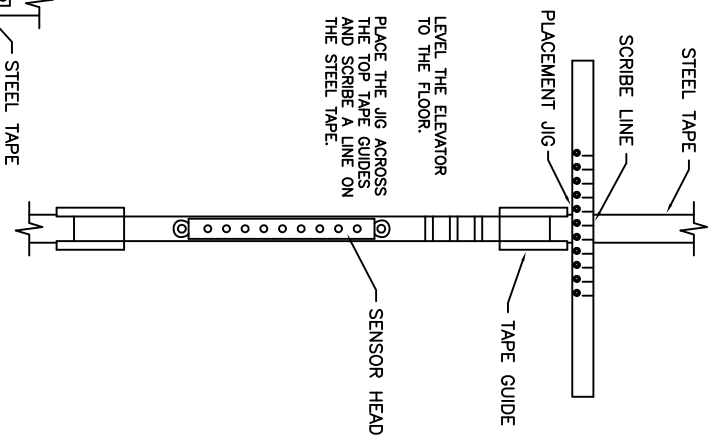
ONCE CORRECTLY ALIGNED SECURE THE MOUNTING BRACKET TO THE CROSSHEAD.

MOUNT AND WIRE THE POWER SUPPLY BOX.



LEVEL THE ELEVATOR TO THE FLOOR.

PLACE THE JIG ACROSS THE TOP TAPE GUIDES AND SCRIBE A LINE ON THE STEEL TAPE.

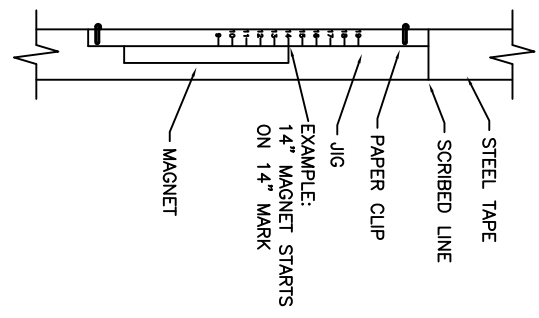


FOLD THE JIG AROUND THE STEEL TAPE WITH THE NUMBERED SIDE FACING OUT.

ALIGN THE TOP OF THE JIG WITH THE SCRIBED LINE.

SECURE THE JIG TO THE STEEL TAPE WITH THE PAPER CLIPS PROVIDED.

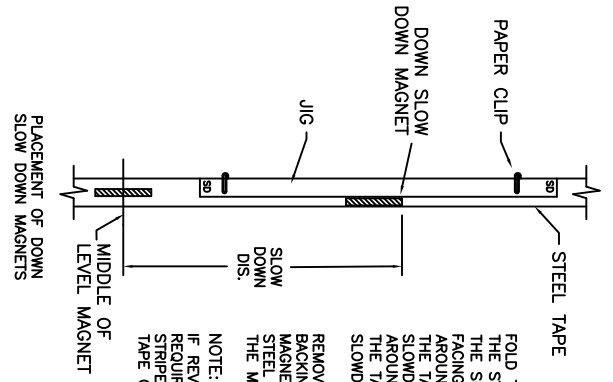
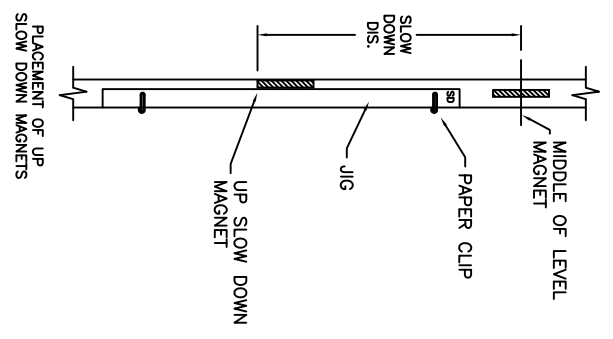
REMOVE THE WHITE BACKING FROM THE MAGNET. WIPE AWAY OIL FROM THE STEEL TAPE. SECURE THE MAGNET TO THE STEEL TAPE AT THE MARK EQUAL TO THE MAGNET LENGTH.



FACING THE TAPE UP, SLOWDOWN IS ON THE LEFT, LEVELING IS IN THE CENTER, AND DOWN SLOWDOWN IS ON THE RIGHT SIDE.

DETERMINE THE SLOW DOWN DISTANCE. (GENERALLY 12" PER 50 FPM. OF CAR SPEED.)

MEASURE FROM THE CENTER OF THE LEVELING MAGNET, UP AND DOWN FOR THE UP AND DOWN FOR THE UP SLOWDOWNS.



FOLD THE JIG AROUND THE STEEL TAPE WITH THE SIDE MARKED (SD) FACING OUT. (FOLD AROUND RIGHT SIDE OF THE TAPE FOR UP SLOWDOWNS, FOLD AROUND LEFT SIDE OF THE TAPE FOR DOWN SLOWDOWNS.)

REMOVE THE WHITE BACKING FROM THE MAGNET. CLEAN THE STEEL TAPE AND APPLY THE MAGNET.

NOTE:
IF REVERSE MAGNETS ARE REQUIRED, THERE IS A RED STRIPE ON THE WHITE BACKING TAPE OF THE MAGNET.



IP 8300 TAPE SELECTOR
INSTALLATION INSTRUCTIONS
READ THESE INSTRUCTIONS
CAREFULLY BEFORE
INSTALLING TAPE SELECTOR
IS309
3-4-98