

**MODEL 522**

- Machine weight: 2,600 lbs.
- 17,600 lbs. maximum sheave shaft load
- 20 inch drive sheave
- 7-1/2 inch V-grooves single wrap
- 1,868 ft.-lbs. brake torque per shoe
- UL/CSA CUS Certified
- Capacity up to 2200 lbs. 1:1, 4000 lbs. 2:1

**MODEL 525**

- Machine weight: 3,350 lbs.
- 22,000 lbs. maximum sheave shaft load
- 25 inch drive sheave
- 7-1/2 inch or 6-5/8 inch V-grooves single wrap
- 3,190 ft.-lbs. brake torque per shoe
- UL/CSA CUS Certified
- Capacity up to 3500 lbs. 1:1, 6500 lbs. 2:1

**MODEL 527**

- Machine weight: 3,500 lbs.
- 22,000 lbs. maximum sheave shaft load
- 25 inch drive sheave
- 7-1/2 inch or 6-5/8 inch V-grooves single wrap
- 3,190 ft.-lbs. brake torque per shoe
- UL/CSA CUS Certified
- Capacity up to 4500 lbs. 1:1, 8500 lbs. 2:1

# FRAME 500 Series: 522, 525, 527

Single Wrap

Frame 500 has the capacity to lift 2,000 to 4,500 lbs. at speeds to 700 fpm with 1:1 roping or 2,200 to 8,000 lbs. at speeds to 700 fpm with 2:1 roping.



**Frame 500 Series 1:1 duty table**

FPM	200		250		350		400		500		600		700	
FREQ. (HZ)	5.1		6.4		8.9		10.2		12.7		15.3		17.8	
RPM	31		38		53		61		76		92		107	
CAPACITY	HP	AMPS	HP	AMPS	HP	AMPS	HP	AMPS	HP	AMPS	HP	AMPS	HP	AMPS
2200	7.4	20	8.4	20	11.8	20	13.5	20	16.8	31	20.2	31	23.6	31
2500	8.4	25	10.5	25	14.7	25	16.8	25	21	39	25.3	39	29.5	39
3000	10.1	30	12.6	30	17.7	30	20.2	30	25.3	47	30.3	47	35.4	47
3500	11.8	35	14.7	35	20.6	35	23.6	35	29.5	55	35.4	55	41.2	55
4000	13.5	44	16.8	44	23.6	44	26.9	44	33.7	71	40.4	71	47.1	71
4500	15.2	50	18.9	50	26.5	50	30.3	50	37.9	80	45.5	80	53	80
<b>Model 522</b>	<b>Model 525</b>	<b>Model 527</b>	50% counterweight. Consult Imperial Electric for 40% and 45% counterweighting data.											

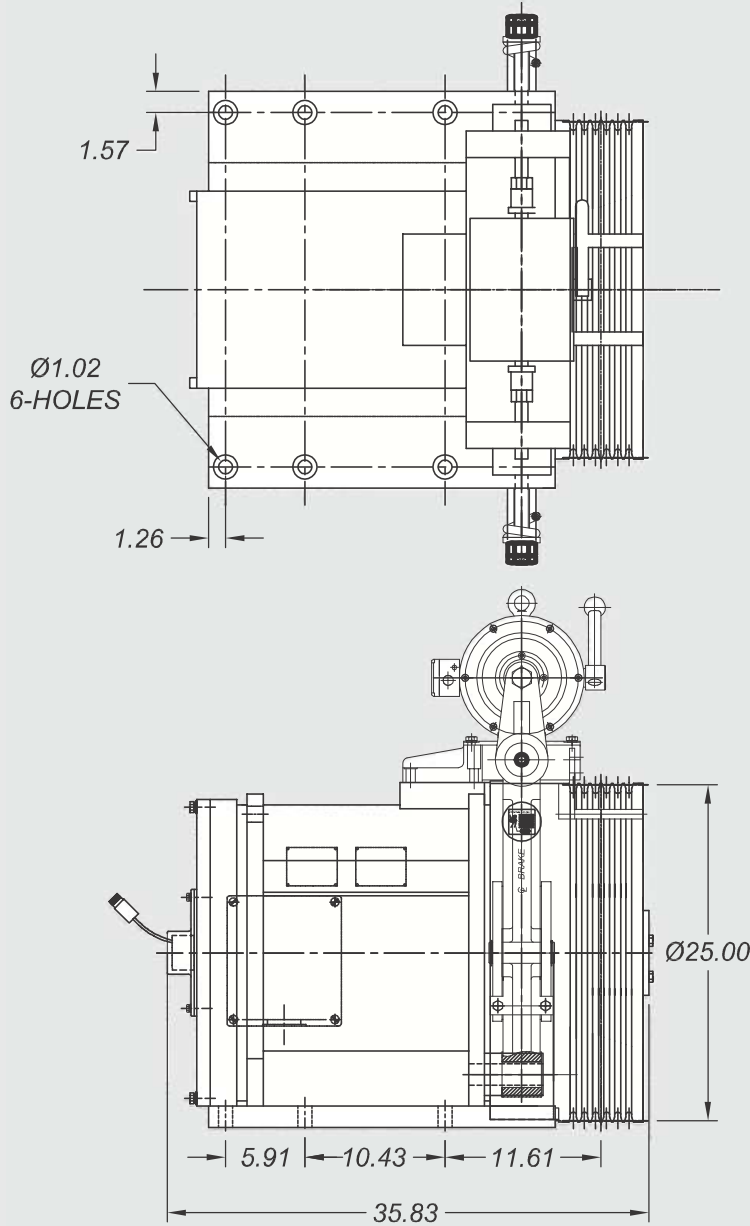
**Frame 500 Series 2:1 duty table**

FPM	300		350		400		500		600		700	
FREQ. (HZ)	19.1		22.3		25.5		31.8		38.2		44.6	
RPM	115		134		153		191		229		267	
CAPACITY	HP	AMPS	HP	AMPS	HP	AMPS	HP	AMPS	HP	AMPS	HP	AMPS
2000	10.7	19.0	12.5	19.0	14.3	19.0	17.8	23.7	21.4	32.3	25.0	32.3
2500	13.4	23.7	15.6	23.7	17.8	23.7	22.3	29.7	26.7	40.3	31.2	40.3
3000	16.0	28.5	18.7	28.5	21.4	28.5	26.7	35.6	32.1	48.4	37.4	48.4
4000	18.7	33.2	21.8	33.2	25.0	33.2	31.2	41.5	37.4	56.4	43.7	56.4
4500	24.1	40.1	28.1	40.1	32.1	40.1	40.1	51.5	48.1	70.5	56.1	70.5
5000	26.7	46.8	31.2	46.8	35.7	46.8	44.6	57.1	53.5	80.2	62.4	80.2
5500	29.4	51.5	34.3	51.5	39.2	51.5	49.0	62.8	58.8	88.3	68.6	88.3
6500	34.8	60.8	40.6	60.8	46.3	60.8	57.9	74.2	69.5	104.3	81.1	104.3
<b>Model 522</b>	<b>Model 525</b>	<b>Model 527</b>	50% counterweight. Consult Imperial Electric for 40% and 45% counterweighting data. Consult Imperial for higher ratings.									

# Gearless AC Machines

## Frame 500 series dimensional diagrams

### Model 525/527



## 525/527 MACHINE

### NOTE:

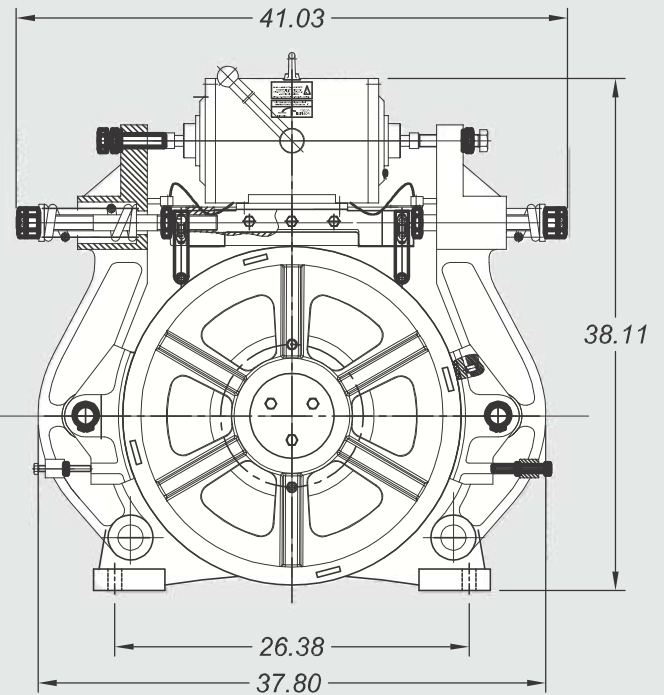
FRAME: 525/527

DRIVE SHEAVE: 25" WITH

(7)-1/2" or (6)-5/8" V GROOVES

MOTOR WEIGHT 525 : 3350 LBS

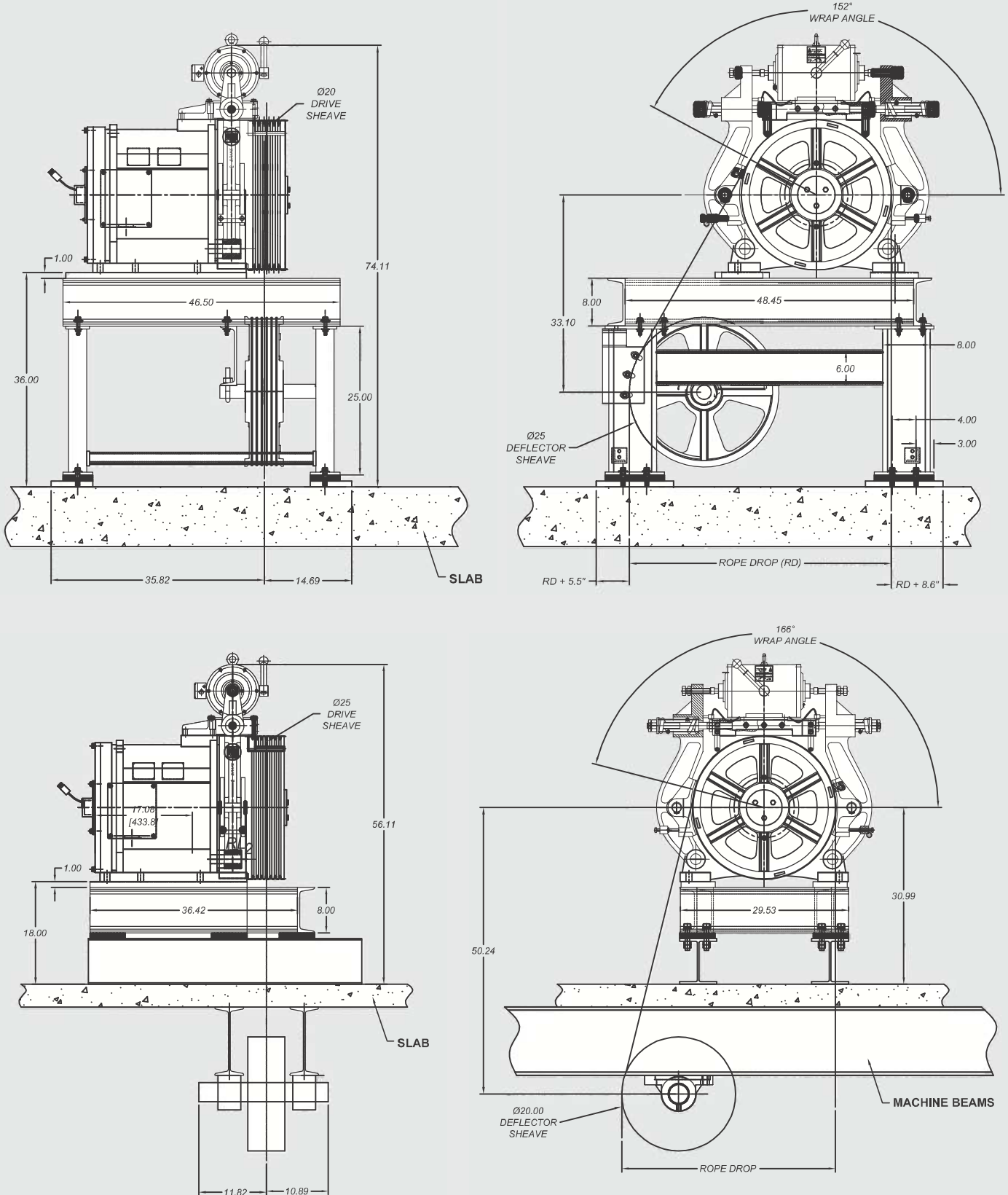
MOTOR WEIGHT 527 : 3500 LBS



# Gearless AC Machines

## Frame 500 series dimensional diagrams

### Model 525/527 with base



Note: Contact Imperial Electric for actual dimensions.