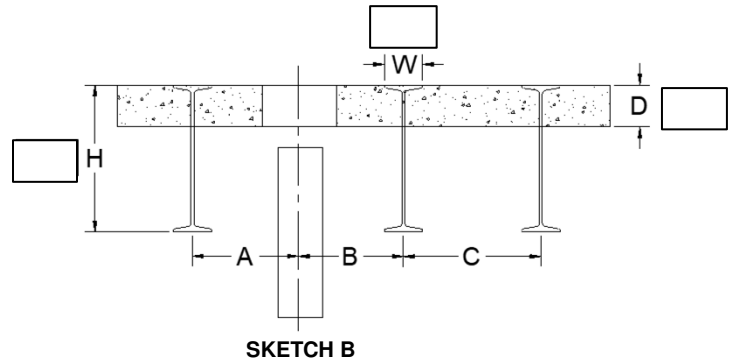
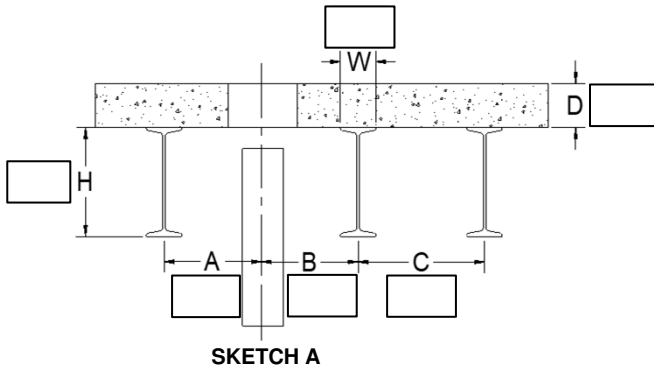


CUSTOMER NAME: \_\_\_\_\_

JOB NAME: \_\_\_\_\_

- GEARLESS AC MACHINE QUANTITY: \_\_\_\_\_
- CAR CAPACITY: \_\_\_\_\_
- CAR SPEED: \_\_\_\_\_
- ROPING: \_\_\_\_\_
- TRAVEL HEIGHT: \_\_\_\_\_
- EMPTY CAR WEIGHT: \_\_\_\_\_
- CWT %: \_\_\_\_\_
- HOIST ROPES: \_\_\_\_\_  
QUANTITY: \_\_\_\_ SIZE: \_\_\_\_\_
- PITCH OF HOIST ROPES: \_\_\_\_\_
- COMPENSATION: TYPE  ROPE  CHAIN  
COMPENSATION ASSUMED TO BE 100%
- "ROPE DROP" SEE SKETCH "C"-DIM "R" \_\_\_\_\_
- BUILDING POWER SUPPLY (VOLT.): \_\_\_\_\_

- MODEL: \_\_\_\_\_
- CONTROLLER MANUFACTURER: \_\_\_\_\_
- RETAINING AN EXISTING DEFLECTOR SHEAVE?  
IF YES: DIAMETER \_\_\_\_\_  
IF NO: REQUIRED DIAMETER SHEAVE TRACTION' \_\_\_\_\_
- ENCODER CABLE LENGTH:  
 (35 FT MAGNETEK)  (45 FT KEB)
- ASME A17 CODE COMPLIANCE TO WHICH REVISION  
\_\_\_\_\_
- SEISMIC ZONE: IF YES:  ZONE 3  ZONE 4  
IF NO:
- DRIVE MANUFACTURER \_\_\_\_\_ OTIS \_\_\_\_\_ SCHINDLER  
\_\_\_\_\_ KEB \_\_\_\_\_ MAGNETEK \_\_\_\_\_ TKE 10K



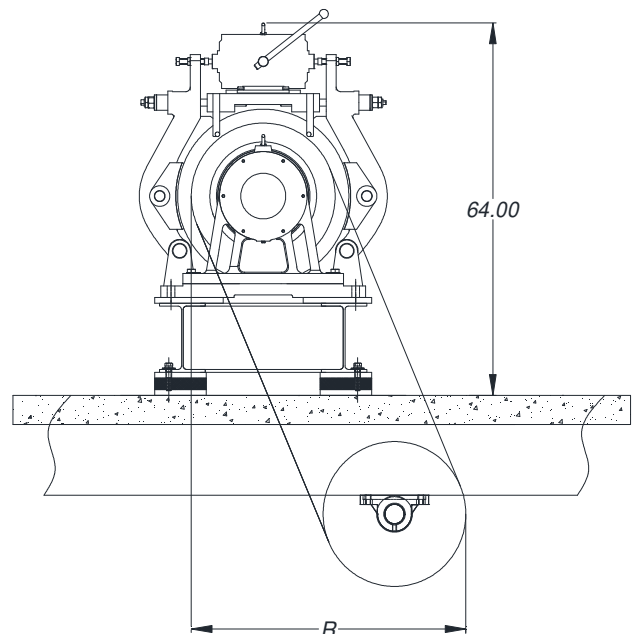
**MACHINE BEAMS LOCATION**

- BEAM SPACING (SEE SKETCH "A"- DIM. "A", "B", & "C")
- BEAM / CHANNEL SIZE: \_\_\_\_\_ "H x \_\_\_\_\_ "W"
- FLOOR SLAB THICKNESS: \_\_\_\_\_ (DIM. "D")
- IF SECONDARY MOUNTING IN MACHINE ROOM  
 YES [FINISH ON PAGE 2]

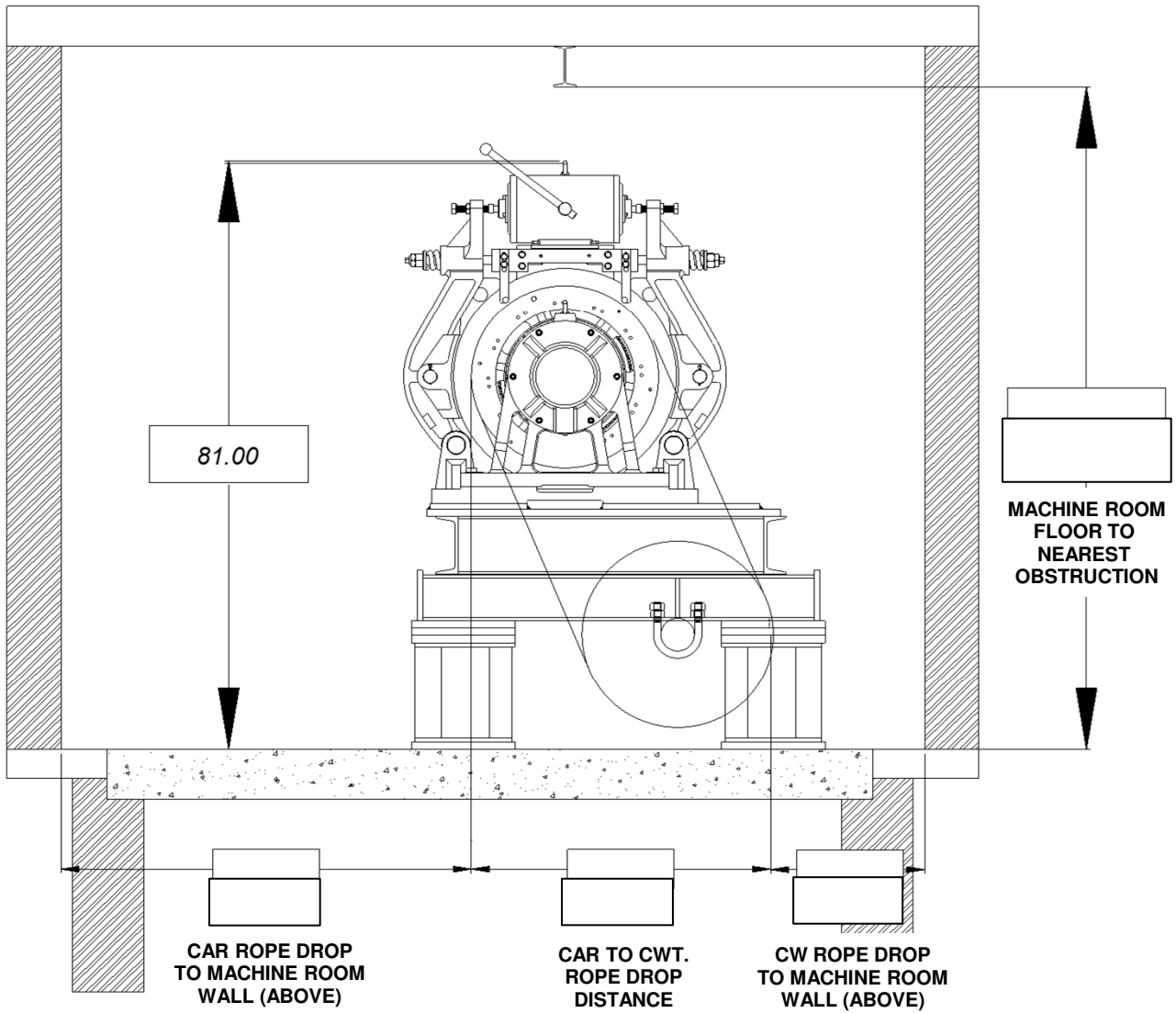
**BREAKDOWN CRATING REQUIRED:**  NO  YES  
(Machine is separated into major components to reduce size and weight for easier handling).

- OPTION 1: BRAKE SHIPPED SEPARATELY
- OPTION 2: FRAME, ROTOR SHEAVE ASSEMBLY AND BRAKE PARTS SHIPPED SEPARATELY (requires extensive customer technical expertise to re-assemble correctly and safely).
- IMPERIAL TO PROVIDE ON-SITE TECHNICIAN TO RE-ASSEMBLE MACHINE

ADDITIONAL CHARGES APPLY TO ALL OPTIONS.



**FRAME 705OB MODEL SHOWN WITH LS PACKAGE IN SKETCH C**



**SKETCH D  
VIEW FACING THE MACHINE SHEAVE  
RIGHT-HAND SWING SHOWN**

**NOTES:**

1. FILL IN DIMENSIONS
2. PROVIDE MACHINE ROOM PLAN SKETCH (IF AVAILABLE).
3. INDICATE LEFT-HAND SWING OR RIGHT-HAND SWING MACHINE REQUIRED:

Select one

**NOTE: SKETCH D SHOWS RIGHT-HAND SWING**

**FRAME 705OB MODEL SHOWN WITH TABLE TOP PACKAGE IN SKETCH D**