

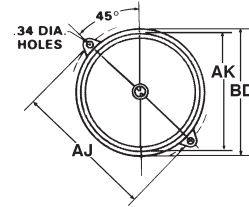
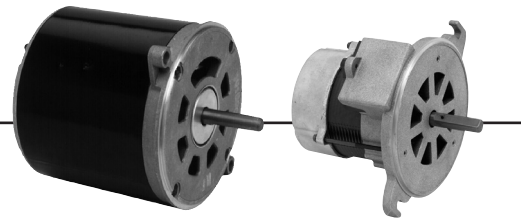
Split Phase and Capacitor Start Oil Burner Totally Enclosed When Mounted

APPLICATIONS:

Designed to meet manufacturer's requirements for oil burners.

FEATURES:

- 40°C Ambient
- 20" Leads, Located At 3 O'clock Viewed From End Opposite Shaft
- 1.0 Service Factor
- Reversible Rotation, Except As Noted
- Manual Reset Thermal Overload Protector
- 56N Frame Has 2 Holes And Screws For Mounting Outlet Box
- 56N Flange Is Enclosed, 48M And 48N Flange Are Ventilated
- Bearings Have All Angle Thrust System
- **Discount Symbol: DS-3HAC**



NEMA [†] Frame	Bolt Circle AJ	Flange Dia. AK	Outside Dia. BD
48M	6.75"	5.500"	6.25" max
48N, 56N	7.25"	6.275"	7.00" max

OEM Direct Replacements: Beckett^{®†}, Carlin^{®†}, Ducane^{®†}, Wayne Home^{®†}, (CWLE)

HP	RPM	Voltage	Catalog Number	Bearings	NEMA Frame	Amps	Shaft N	Shaft U	Protector	Total C	Ship Wt.	Notes	List
1/7	3450	115	3274	Ball	48M	1.7	2.0	0.500	Auto	6.7	10	84, 86, H46, F	\$72
	3450	115	5866	Ball	48M	2.3	2.0	.500	Man	7.2	11	78, 84	\$112

Flange Mounted, Totally Enclosed, Non-Ventilated When Mounted, Without Base

HP	RPM	Voltage	Catalog Number	Bearings	NEMA Frame	Amps	Shaft N	Shaft U	Protector	Total C	Ship Wt.	Notes	List
1/8	3450	115	2097	Ball	48N	2.4	2.0	.500	Man	7.1	11	78	\$124
	1725	115	3196	Ball	48N	2.4	2.0	.500	Man	7.6	14	85, A	\$133
1/7	3450	115	3083	Ball	48M	2.6	2.0	.500	Man	7.3	11	F	\$118
1/6	1725	115	3252	Ball	48N	3.1	2.0	.500	Man	7.6	15	78	\$145
1/4	3450	115	2302	Ball	48N	3.7	2.0	.500	Man	8.3	15	78	\$162
1/3	3450	115	2319	Ball	48N	4.8	2.0	.500	Man	10.5	18	78	\$190
	1725	115	3580	Ball	56N	4.8	2.3	.500	Man	10.5	25	77, 78	\$328

Note 77: 5/8" Shaft Adapter And Key Packed With Motor

Note 78: Class B Insulation System

Note 84: Non-Reversible

Note 85: Removable Face Plate

Note 86: PSC Motor, Capacitor Included

Note H46: 3.7" Body

Note A: Class A Insulation

Note F: Class F Insulation