

SelecTech[®] Constant Torque EC Motors

Rugged ECM Technology



- Robust ECM design based upon years of Nidec field experience
- Designed to operate in the demanding environments found in residential and light commercial HAC systems
- Patented motor that achieves current governmental regulated efficiency targets through our efficient motor design
- Integrates easily into existing air moving systems with simple 24V control and constant torque operation

Product Overview and Options

The SelecTech motor is a durable, easy to integrate, Electrically Commutated Motor (ECM) solution for high efficient direct drive blower applications. The available nine discrete 24 volt tap settings are fully programmable on your assembly line for different airflow requirements. Rugged and simple to operate, the SelecTech[®] is setting a new benchmark for reliable ECM technology.

Key Features and Benefits

- High Efficiency EC Constant Torque Motor
- 9 programmable 24-volt speed or torque taps with programmable on/off delays
- Easy integration into direct drive blower applications with simple 24V signals
- 6000V surge protection
- Fully potted electric module for superior moisture protection
- 3 efficiency tiers offered

Product Specifications

Horsepower: 1/3, 1/2, 3/4, 1 HP

Voltage: 1Ø, 115, 208 – 230, & 460 Volts

Speeds: 600 – 1800 RPM

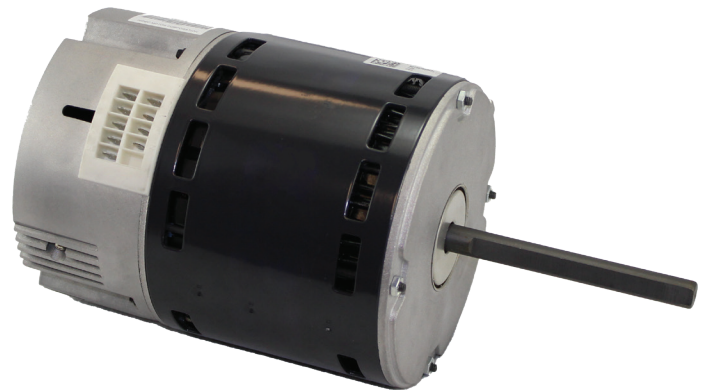
Inputs: Nine Programmable Taps, 24 V Torque Settings

Operation Modes: Constant Torque, Constant Speed Frame:
NEMA[®] 48

Enclosure: Open Air Over (OAO)

Efficiency: Up to 85%

Mounting: Belly-band, Stud mount, Rigid base, & Flex Mount

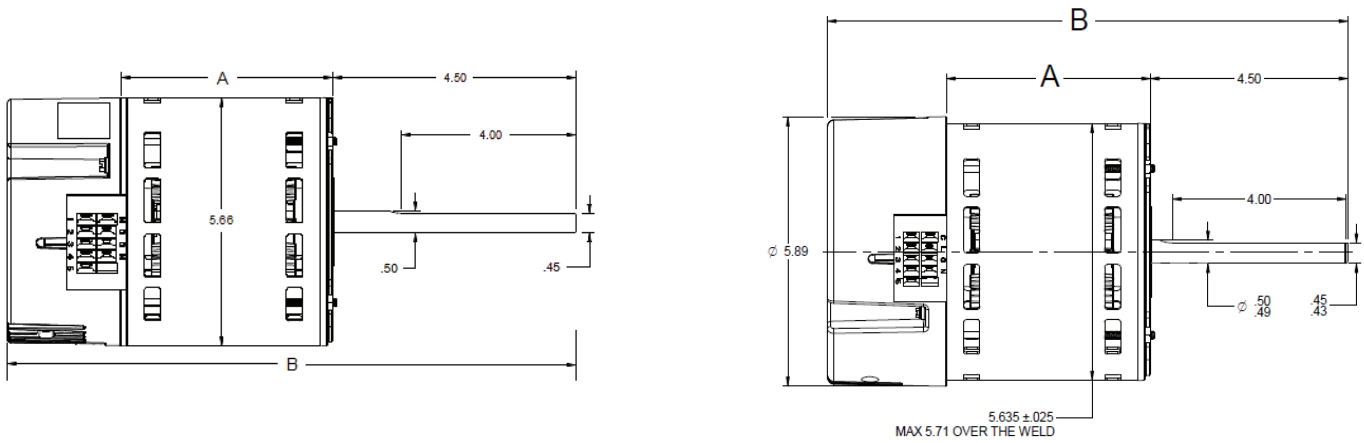




Dual Shaft / Remote Mounted Electronics

SelecTech® motor electronics can be mounted remotely, suitable for applications requiring dual shaft or in which there is limited space around the motor.

Dimension Print



208-230V		
HP	Dim. A	Dim. B
1	4.38	11.85
3/4	4.00	11.48
1/2	3.63	11.10
1/3	3.25	10.73

460V		
HP	Dim. A	Dim. B
1	4.26	12.46
3/4	3.88	12.08
1/2	3.51	11.71
1/3	3.13	11.33

For additional information, please contact your Nidec representative.

† All marks shown within this document are properties of their respective owners.

Nidec, 2021; All Rights Reserved. U.S. MOTORS® is a registered trademark of Nidec Motor Corporation. Nidec Motor Corporation trademarks followed by the ® symbol are registered with U.S. Patent and Trademark Office.