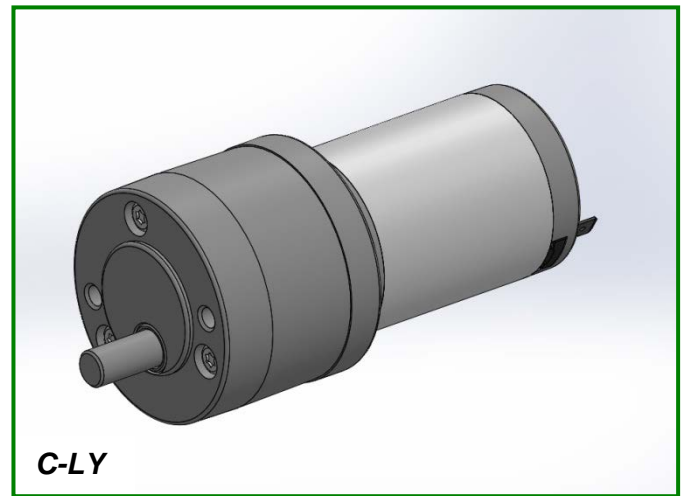


Compact, quiet and versatile, the C In-Line Series is ideal when space is a premium. A variety of features and gear reductions enable custom design and low life-cycle costs.

### SPECIFICATIONS & CONSTRUCTION

**Type:** Zinc die cast DC gearmotor  
**Output speeds:** 10 to 500 RPM  
**Voltage:** 6Vdc to 36Vdc  
**Bearings:** Self-aligning sintered bronze  
**Termination:** Spade terminals or lead wires  
**Duty Cycle:** Intermittent  
**Motors Available:** 300, 500, EY, 2500, LY  
**Insulation Class:** 300, 500, EY, 2500 =B; LY=F  
**Rotation:** Reversible  
**Cover:** Die cast  
**Lubrication:** Synthetic Grease  
**Regulatory Approvals:** RoHs



### TYPICAL APPLICATIONS

- Office Equipment
- Laminators
- Valve Actuators
- Medical Equipment
- Banking Equipment
- Ticket Dispensing

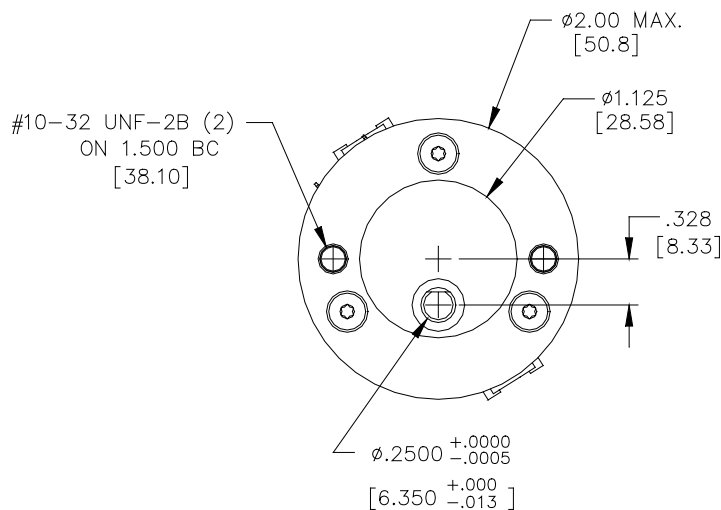
**Maximum Permissible Torque: 30 In.Lb (3.4 Nm)**  
**Speed: Up to 500 RPM**

*Note: Speed and torque combinations will vary depending on the motor/gearbox combination.*

### OPTIONAL FEATURES

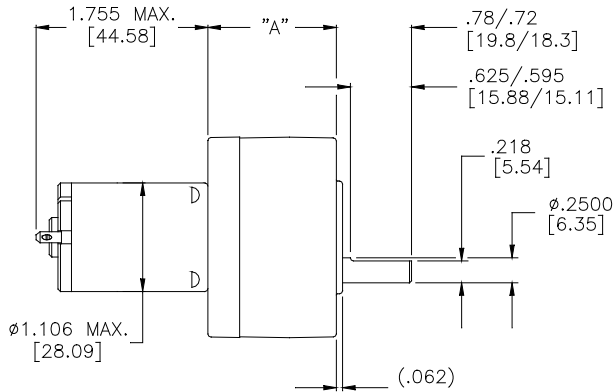
- Customized output shafts
- Various lead lengths, terminals and connectors
- Ball bearings for high radial loads
- Ball bearing for motor
- EMI Filtering: Internal and External Suppression
- Magnetic Encoder: 2 to 12 PPR Resolution
- Optical or Capacitive: Up to 2048 PPR Resolution

### **MOUNTING**



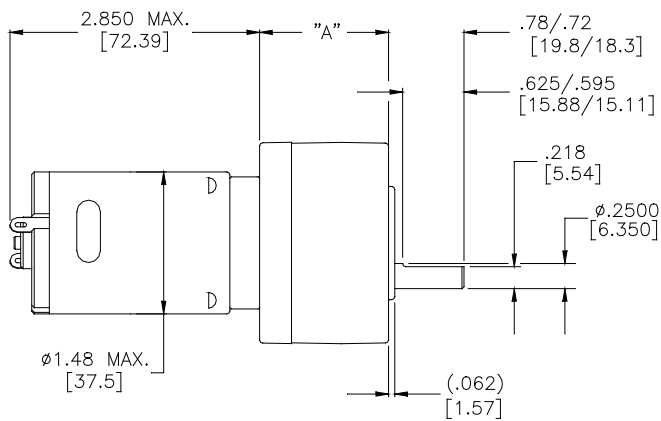
**DIE-CAST COVER**

C300



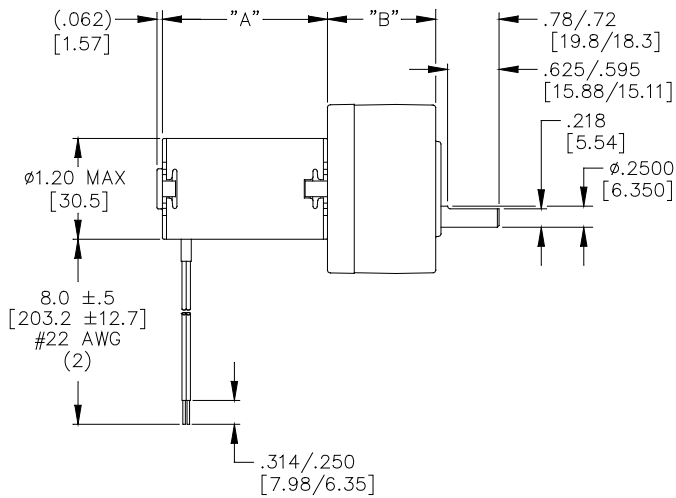
STANDARD DUTY (< 240 OZ-IN.)	DIM "A" ±.015[0.38] IN INCHES [MILLIMETERS]
2-STEP	.958 [24.33]
3-STEP	1.120 [28.45]
4-STEP	1.282 [32.56]
5-STEP	1.444 [36.68]
6-STEP	1.606 [40.79]
7-STEP	1.768 [44.91]

C500



STANDARD DUTY (< 240 OZ-IN.)	DIM "A" ±.015[0.38] IN INCHES [MILLIMETERS]
2-STEP	.958 [24.33]
3-STEP	1.120 [28.45]
4-STEP	1.282 [32.56]
5-STEP	1.444 [36.68]
6-STEP	1.606 [40.79]
7-STEP	1.768 [44.91]

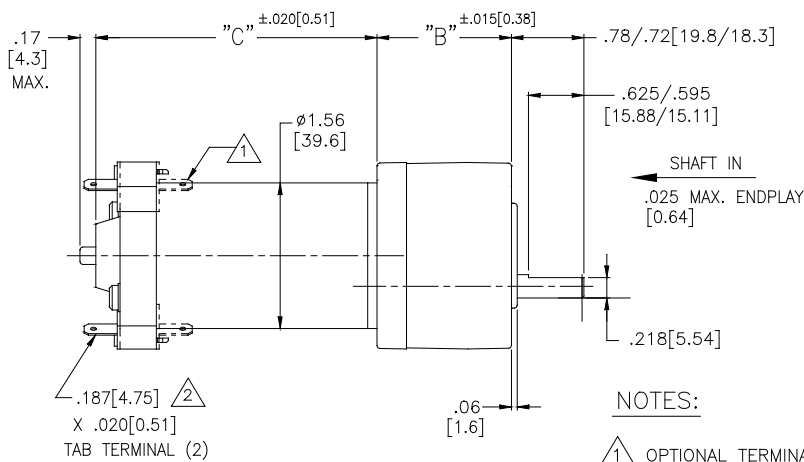
## EYQC



BASEMOTOR TYPE	DIM "A" (MAX) IN INCHES [MILLIMETERS]
EYQM-3X SERIES	1.69 [42.9]
EYQM-6X SERIES	1.99 [50.6]
EYQM-7X SERIES	2.13 [54.1]

STANDARD DUTY	DIM "B" ±.015[0.38] IN INCHES [MILLIMETERS]
2-STEP	.958 [24.33]
3-STEP	1.120 [28.45]
4-STEP	1.282 [32.56]
5-STEP	1.444 [36.68]
6-STEP	1.606 [40.79]
7-STEP	1.768 [44.91]

## C2500



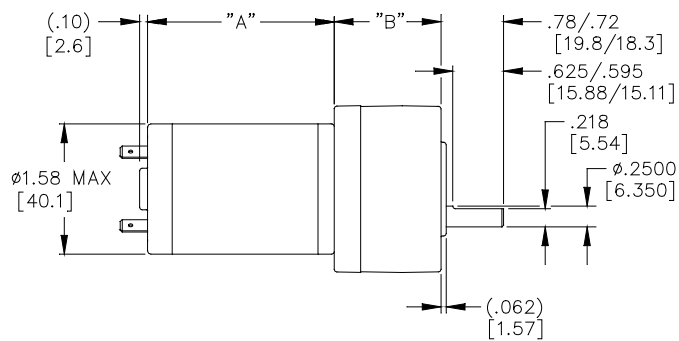
STANDARD DUTY (<240 OZ. IN.)	"B" DIM
2-STEP	.958[24.33]
3-STEP	1.120[28.45]
4-STEP	1.282[32.56]
5-STEP	1.444[36.68]
6-STEP	1.606[40.79]
7-STEP	1.768[44.91]

MOTOR MODEL	"C" DIM
2508	2.172[55.17]
2512	2.422[61.52]
2518	2.797[71.04]
2524	3.172[80.57]
2532	3.672[93.27]

### NOTES:

- ① OPTIONAL TERMINAL PROJECTION (INWARD).
- ② OPTIONAL .110[2.79] x .020[0.51] TERMINALS.

LYMC



BASEMOTOR TYPE	DIM "A" (MAX) IN INCHES [MILLIMETERS]
LYMM-4X SERIES	2.11 [53.6]
LYMM-6X SERIES	2.36 [59.9]
LYMM-8X SERIES	2.61 [66.3]
LYMM-CX SERIES	3.11 [79.0]

STANDARD DUTY	DIM "B" ±.015[0.38] IN INCHES [MILLIMETERS]
2-STEP	.958 [24.33]
3-STEP	1.120 [28.45]
4-STEP	1.282 [32.56]
5-STEP	1.444 [36.68]
6-STEP	1.606 [40.79]
7-STEP	1.768 [44.91]