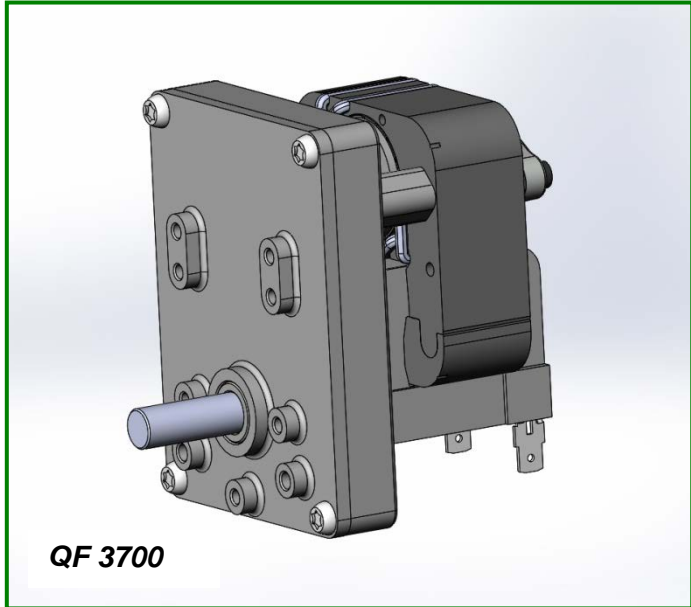


The QF gearmotor is ideal for a wide variety of product applications because of its dependability. It comes with a broad selection of gearing and custom modifications.

**SPECIFICATIONS & CONSTRUCTION**

- Type:** Zinc die cast AC gearmotor
- Output speeds:** 5 to 100 RPM
- Voltage:** 24V – 230V, 50 or 60 Hz
- Bearings:** Self-aligning sintered bronze
- Termination:** Spade terminals or lead wires
- Protection:** Impedance or thermally protected
- Duty Cycle:** Intermittent
- Motors Available:** 3400, 3700, 4400, 4500
- Rotation:** Unidirectional; PSC-Reversing (QFS)
- Cover:** Die cast
- Lubrication:** Synthetic Grease
- Regulatory Approvals:** UL, CSA, CE, RoHs



**QF 3700**

**TYPICAL APPLICATIONS**

- Valve Actuators
- Material Handling
- Banking equipment
- Business equipment
- Food Service Equipment
- Pumps

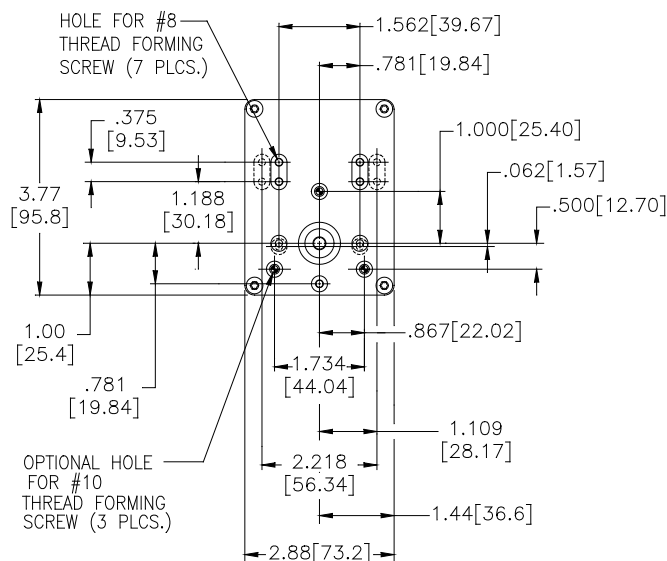
**Maximum Permissible Torque: 125 In.Lb (14.1 Nm)**  
**Speed: Up to 100 RPM**

*Note: Speed and torque combinations will vary depending on the motor/gearbox combination.*

**OPTIONAL FEATURES**

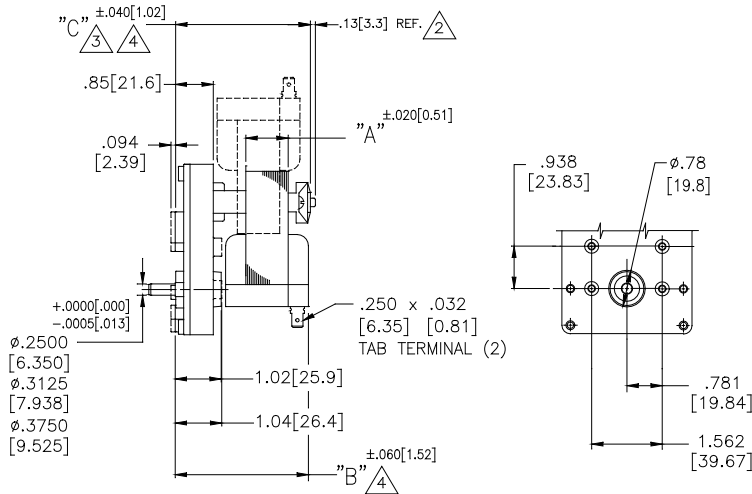
- Customized output shafts including dual output
- Various lead lengths, terminals and connectors
- Brakes: Positive-Stop, Cone, Coil Spring
- Output Needle bearings for high radial loads
- Ball bearing for motor
- Fan for additional cooling

**MOUNTING**



# QF SERIES PARALLEL SHAFT AC GEARMOTORS *Nidec* -All for dreams

QF3700

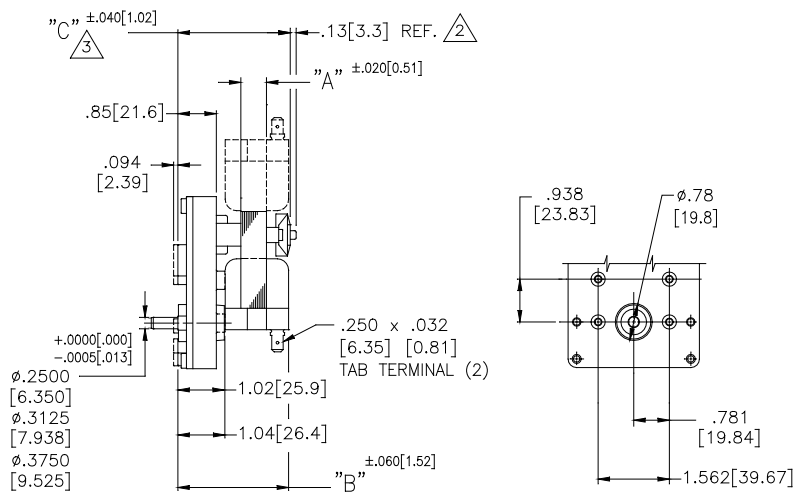


STATOR SIZE	"A" DIM	"B" DIM	"C" DIM
3709	.575 [14.61]	2.667 [67.74]	2.634 [66.90]
3715	.937 [23.80]	3.029 [76.94]	2.996 [76.10]
3720	1.250 [31.75]	3.342 [84.89]	3.309 [84.05]
3724	1.500 [38.10]	3.592 [90.24]	3.559 [90.40]
3728	1.760 [44.70]	3.852 [97.84]	3.819 [97.00]
3732	2.000 [50.80]	4.092 [103.94]	4.059 [103.10]

**NOTES:**

- BROKEN LINES REPRESENT OPTIONAL MOUNTINGS.
- FOR FAN APPLICATION, ADD .600 [15.24] TO DIMENSION. FOR COIL SPRING BRAKE APPLICATION, ADD .060 [1.52] TO DIMENSION.
- FOR COIL SPRING BRAKE APPLICATION, ADD .188 [4.78] TO "C" DIMENSION.
- FOR LONG MOUNTING APPLICATION, SUBTRACT .185 [4.70] FROM "B" & "C" DIMENSION.

QF4500



STATOR SIZE	"A" DIM	"B" DIM	"C" DIM
4506	.375 [9.53]	2.269 [57.63]	2.246 [57.05]
4509	.562 [14.27]	2.456 [62.38]	2.433 [61.80]
4512	.733 [18.62]	2.627 [66.73]	2.604 [66.14]
4515	.937 [23.80]	2.831 [71.91]	2.808 [71.32]
4520	1.275 [32.39]	3.169 [80.49]	3.146 [79.91]
4526	1.625 [41.28]	3.519 [89.38]	3.496 [88.80]

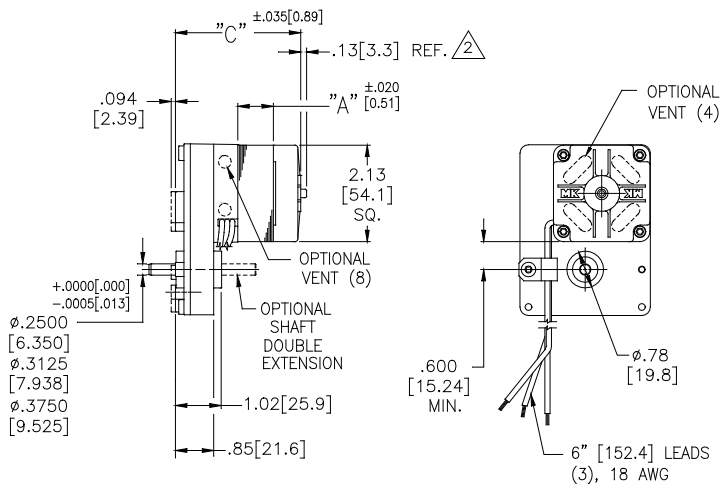
**NOTES:**

- BROKEN LINES REPRESENT OPTIONAL MOUNTINGS.
- FOR FAN APPLICATION, ADD .600 [15.24] TO DIMENSION. FOR COIL SPRING BRAKE APPLICATION, ADD .060 [1.52] TO DIMENSION.
- FOR COIL SPRING BRAKE APPLICATION, ADD .188 [4.78] TO "C" DIMENSION.

# QF SERIES PARALLEL SHAFT AC GEARMOTORS *Nidec* -All for dreams



QFS3400



STATOR SIZE	"A" DIM	"C" DIM
3410	.625 [15.88]	2.605 [66.17]
3420	1.250 [31.75]	3.230 [82.04]
3424	1.500 [38.10]	3.480 [88.39]

**NOTES:**

- BROKEN LINES REPRESENT OPTIONAL MOUNTINGS.
- $\triangle 2$  FOR FAN APPLICATION, ADD  $.600$  [15.24] TO DIMENSION.  
FOR BRAKE APPLICATION, ADD  $.09$  [2.3] TO "C" DIMENSION.