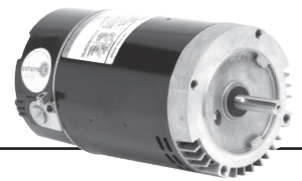


C-Flange Pool and Spa Motors Switchless Design, 6.5" Frame Diameter (Continued): Category "C" & "J"



FEATURES:

- Two Compartment
- Shaft Threads - 7/16-20 UNF-2A
- 50°C Ambient
- 1081 Design
- Continuous Duty
- Class B Insulated
- Open Dripproof
- 300 Series Stainless Steel Shaft
- Thermally Protected
- Secondary "Max Pump" Service Factor (SF) for C-Flange motors to allow for popular OEM pump loading
- Discount symbol: DS-FPS

extreme-E  **Two Speed, Total Horsepower Rated, Soft Start**

THP	RPM	Voltage	Freq	Amps	Shaft	Catalog Number	Motor Frame	Length Less Shaft	Wgt.	List
1.25/0.17	3450/1725	115V	60	14.5/5.3	Threaded	EB973	56J	11.02	28	\$433

NOTE: Toggle switch cover assembly available for two speed models - LO-OFF-HI- X2975769700000L

Pool Cleaner Replacement Motors Switchless Design, 6.5" Frame Diameter: Category "P"



FEATURES:


- Two Compartment
- Shaft Threads - 1/2-20 UNF-2A
- 50°C Ambient
- 1081 Design
- Continuous Duty
- Voltage Selection Device
- Class B Insulated
- Open Drip Proof
- 300 Series Stainless Steel Shaft
- Thermally Protected
- Secondary "Max Pump" Service Factor (SF) for C-Flange motors to allow for popular OEM pump loading
- Discount Symbol: DS-FPS
- Optimized internal airflow design minimizes heat and moisture buildup inside the motor
- Internal bearing cover protects the drive/ pump end ball bearing from water and debris that may occur inside of the motor
- Three additional layers of drive/pump end bearing protection:
 - Double Sealed Ball Bearing
 - Lip Seal
 - Water Slinger



Standard Efficient, Full Service Factor, Full Rated

HP	NEMA ^{®†} SF	THP	RPM	Voltage	Freq	NEMA ^{®†} SF Amps	Max Pump SF Amps	Catalog Number	Motor Frame	Length Less Shaft	Wgt.	Replacement Brand	List
3/4	1.50	1.125	3450	230/115	60	6.3/12.6	7.0/14.0	ASB625	56CZ	10.76	23	Polaris/Zodiac	\$305
3/4	1.50	1.125	3450	230/115	60	6.0/12.0	7.0/14.0	ASB668	56CZ	10.76	23	Letro/Pentair	\$305

Note: Contact dealer for full conditions of operation
Catalog numbers are for competitive comparison purposes only.

extreme-E  Extreme-E[®] represents one of our most efficient running, highest performing lines of motors.

