



PERFECTSPEED® 42

Compact ECM Solution for
Small Fans & Blowers

- ECM Technology provides 25 to 30% improvement in efficiency over 42 frame PSCs
- Flexible mechanical design with newly integrated control suitable for single or dual shaft applications
- Tri-Voltage design helps reduce SKUs and inventory
- Based on Nidec's proven ECM design for quiet, reliable operations

Product Overview and Options

The PERFECTSPEED® 42 EC motor provides high efficiency and precise control in a 42 frame package. Meeting demand for EC technology in lower horsepower applications, the PERFECTSPEED® 42 motor offers unparalleled flexibility with a wide range of voltage and control inputs all in a single rating. Whether in a dual shaft blower or an axial fan, the PERFECTSPEED® 42 provides EC efficiency to a variety of applications.

Key Features and Benefits

- High efficiency EC motor operating in Constant Torque or Speed
- Integrated control for both single & dual shaft applications
- Tri-Voltage (115 through 277V) in single SKU
- Compact design to mechanically fit legacy PSC designs
- Multiple inputs for control
- 6000V surge protection & fully potted control for superior moisture protection

Product Specifications

Horsepower: 1/8, 1/4 HP

Voltage: 115/230/277V (tri-voltage)

Speeds: 300-1800RPM, Full torque down to 1200 RPM

Inputs: 0-10V, PWM, or 3 - 24V Speed Taps

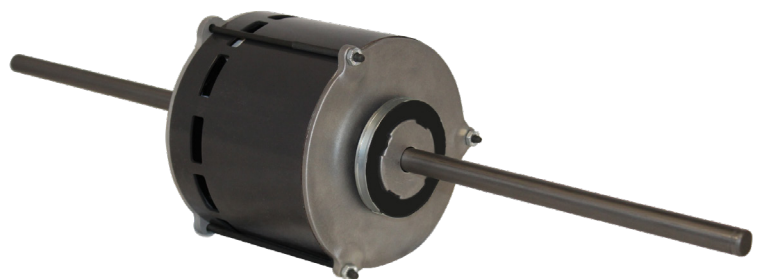
Operation Modes: Constant Torque, Constant Speed

Frame: NEMA®+ 42

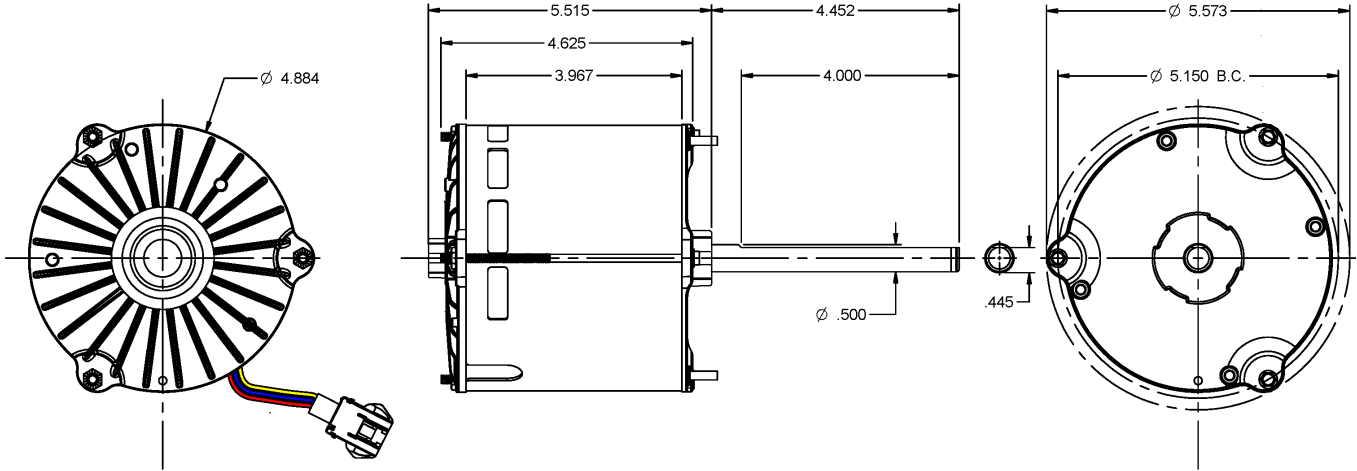
Enclosure: Open Air Over (OAO)

Efficiency: Up to 80%

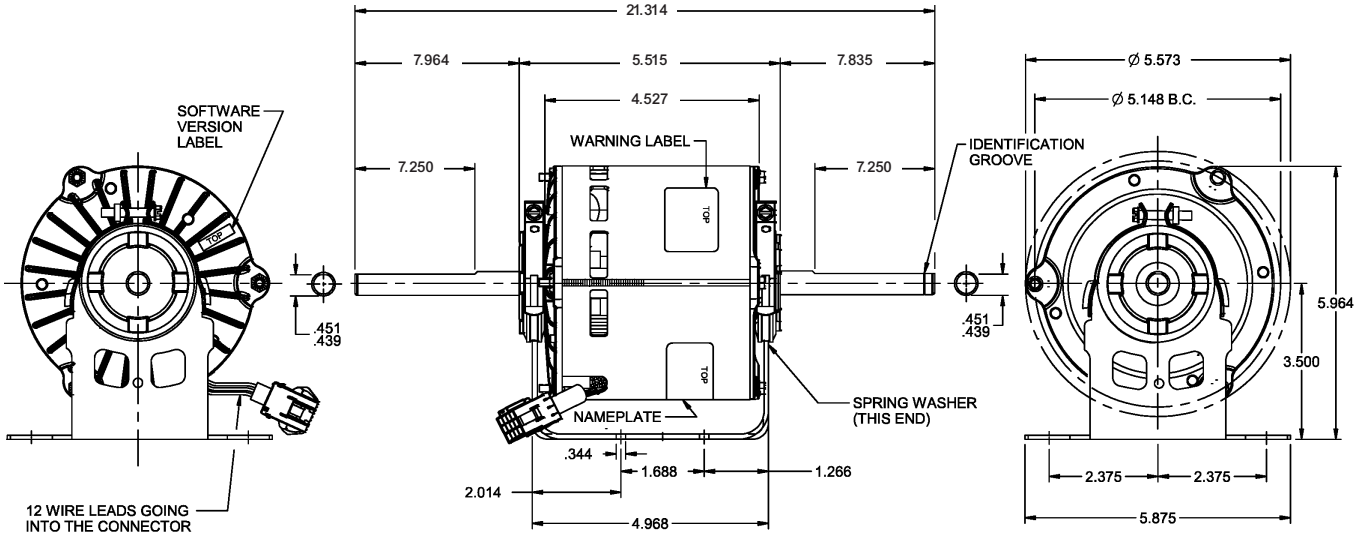
Mounting: Base, Stud or Belly Band



Dimension Print



PERFECTSPEED® 42 Single Shaft



PERFECTSPEED® 42 Dual Shaft