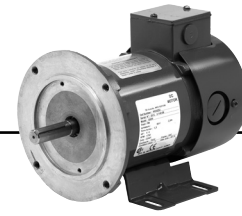


## Definite Purpose Direct Current Permanent Magnet



PM, SWD

### APPLICATIONS:

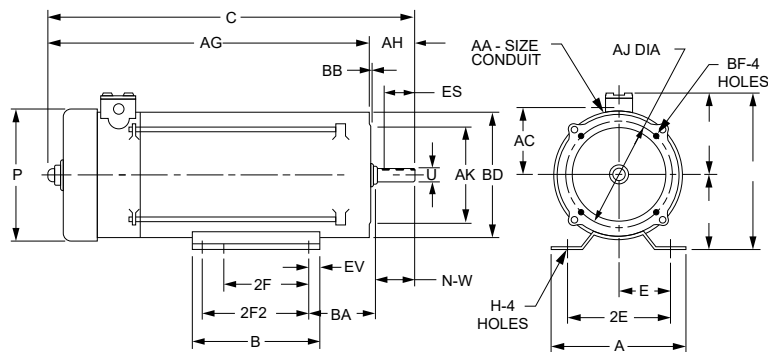
For general industrial equipment including fans, blowers, compressors, pumps and direct connected equipment.

### FEATURES:

- Totally Enclosed Fan Cooled
- NEMA®† C-Face
- Removable Feet On Rigid Base Units
- 20:1 Constant Torque Speed Range
- 40°C Ambient
- Two Armature Leads & No Field Connections Are Required

HP	Base Speed	Top Speed	Frame	Armature Volts	Catalog Number	Type	List	Discount Symbol	Ship Wt. (lbs.)	Notes
1/4	1750	2050	56C	90	G636	PM	\$691	DS-4A	19	
1/3	1750	2050	56C	90	G637	PM	\$732	DS-4A	24	
1/2	1750	2050	56C	180	G641	PM	\$818	DS-4A	24	
	1750	2050	56C	90	G638	PM	\$818	DS-4A	23	
3/4	1750	2050	56C	180	G642	PM	\$992	DS-4A	27	
	1750	2050	56C	90	G639	PM	\$992	DS-4A	28	

## DC Motor Dimensions - Permanent Magnet Motor, Totally Enclosed Fan



A	D	E	2E	2F	H	N-W	U-0.0005	AA	AJ	AK	BA	BD	BF	ES MIN	SQ KEY
6-1/2	3-1/2	2-7/16	4-7/8	3	11/32	1-7/8	5/8	1/2	5-7/8	4-1/2	2-3/4	6-1/2	3-8/16	3/16	3/16

M/N	HP	ENCLOSURE	B	C	O	P*	AB	AC	AG	AH	BB	EV
G636	1/4	TEFC	3-15/16	10-15/16	7-1/2	5-1/2	4	3	8-7/8	2-3/32	5/32	15/32
G637	1/3	TEFC	3-15/16	11-29/32	7-1/2	5-1/2	4	3	9-27/32	2-3/32	5/32	15/32
G638	1/2	TEFC	3-15/16	11-29/32	7-1/2	5-1/2	4	3	9-27/32	2-3/32	5/32	15/32
G641	1/2	TEFC	3-15/16	11-29/32	7-1/2	5-1/2	4	3	9-27/32	2-3/32	5/32	15/32
G639	3/4	TEFC	3-15/16	13-3/32	7-1/2	5-1/2	4	3	11-1/32	2-3/32	5/32	15/32
G642	3/4	TEFC	3-15/16	13-3/32	7-1/2	5-1/2	4	3	11-1/32	2-3/32	5/32	15/32

Dimension "D" will never be exceeded, but may vary from values shown. When exact dimensions are required, shims up to 1/32" may be necessary. All rough casting dimensions may vary by 1/4" due to casting variations.

\*Largest motor width. All dimensions in inches.

forecyte

POWERED BY **Nidec**

Asset Condition Monitoring Solution to visualize\* health and performance data  
Refer to Page 109