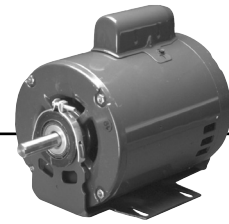


Capacitor Start Belted Fan & Blower Open Drip Proof, Resilient Base

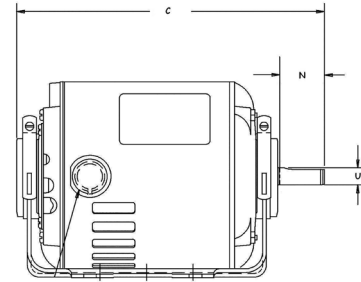


APPLICATIONS:

Designed to meet manufacturer's requirements for belted fans and blowers.

FEATURES:

- 40°C Ambient
- Class A Insulation
- Reversible Rotation
- Suitable For All Angle Operation (Within Blower Housing)
- Automatic Reset Thermal Overload Protector (unless noted)
- Threaded Conduit Hole, Except 299
- **Discount Symbol: DS-3HAC**



HP	RPM	Voltage	Catalog Number	Bearings	NEMA Frame	Amps	Shaft N	Shaft U	Protector	Total C	SF	Ship Wt.	Notes	List
1/4	1140	115/208-230	BD14CA3J9	Ball	56	6.4/3.0-3.2	1.9	0.625	Auto	11.31	1.35	32		\$305
1/3	1725	115/230	180	Ball	48	6.0/3.0	1.5	0.500	Auto	9.9	1.35	18		\$251
1/2	3450	115/208-230	298	Ball	48	8.6/4.3	1.5	.500	Auto	9.9	1.25	16		\$299
	1725	100-120/200-240	6309	Ball	56	6.3-5.6/3.1-2.8	1.9	0.625	Auto	10.8	1.25	26	18,24,98	\$353
	1725	115/208-230	1790	Ball	56	7.4/3.7	1.9	.625	Auto	9.3	1.25	27		\$317
3/4	3450	115/208-230	430	Ball	48	9.2/4.6	1.5	.500	Auto	10.4	1.25	19		\$316
	1725	100-120/200-240	6313	Ball	56	9.2-8.4/4.6-4.2	1.9	0.625	Auto	11.3	1.25	32	18,24,98	\$403
	1725	115/208-230	1893	Ball	56	11.4/5.7	1.9	0.625	Auto	10.8	1.25	27		\$389
1	3450	115/208-230	431	Ball	48Z	11.6/5.8	1.9	.625	Auto	11.3	1.25	13		\$344
	1725	100-120/200-240	6317	Ball	56	12.3-10.8/6.2	1.9	0.625	Auto	12.3	1.15	38	18,24,98	\$499
	1725	115/230	3187C	Ball	56	14.0/7.0	1.9	.625	Auto	11.8	1.25	23	80	\$417
	1725	115/208-230	1769	Ball	56	14.0/7.0	1.9	0.625	Auto	11.8	1.25	30		\$476
1-1/2	3450	115/230	299	Ball	56	17.2/9.0	1.9	.625	Auto	11.9	1.15	32		\$464
	1725	115/208-230	4242	Ball	56	22.4/11.2	1.9	0.625	Auto	12.8	1.15	40		\$514
2	3450	115/208-230	399	Ball	56	18.4/10.1-9.2	1.9	0.625	Auto	12.8	1.2	37		\$324

Note 18: Incorporates Run Capacitor
Note 24: Automatic Reset Thermal Overload Protector

Note 80: Canadian Standard — Connected CCWLE (Reversible)
Note 98: 50/60 Hz Motor