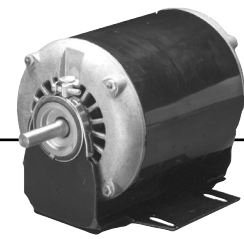


## Split Phase Belted Fan and Blower Open Dripproof

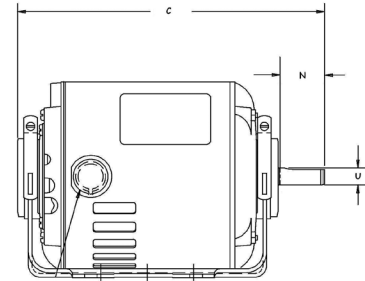


### APPLICATIONS:

To meet manufacturer's requirements for belted fans and blowers.

### FEATURES:

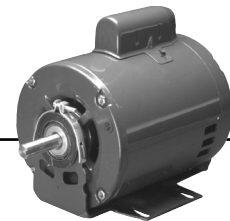
- 48 Frame Diameter Motor On NEMA®† 56 Base
- Includes Shaft Adapter For Conversion To 5/8" Shaft
- 3-1/2" Shaft Height
- Reversible Rotation
- **Discount Symbol: DS-3HAC**



### Single Speed, 48/56 Frame

HP	RPM	Voltage	Catalog Number	List	Bearings	NEMA®† Frame	Amps	Shaft N	Shaft U	Protector	Total C	SF	Ship Wt. (lbs)	Notes
1/3	1725	115/208-230	3622	\$173	Ball	48Y	6.6/3.1-3.3	1.5	0.500	Auto	9.9	1.35	18	78
1/2	1725	115	3624	\$201	Ball	48Y	7.4	1.5	0.500	Auto	9.9	1.25	20	78

## Capacitor Start Belted Fan and Blower Open Dripproof, Resilient Base

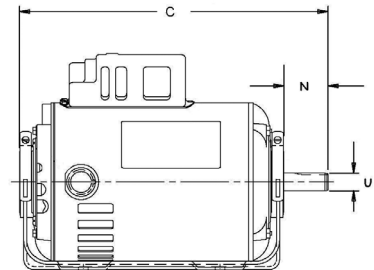


### APPLICATIONS:

To meet manufacturer's requirements for belted fans and blowers.

### FEATURES:

- 40°C Ambient
- Class A Insulation
- Reversible Rotation
- Suitable For All Angle Operation (Within Blower Housing)
- Automatic Reset Thermal Overload Protector
- Threaded Conduit Hole, Except 299
- **Discount Symbol: DS-3HAC**



HP	RPM	Voltage	Catalog Number	List	Bearings	NEMA®† Frame	Amps	Shaft N	Shaft U	Protector	Total C	SF	Ship Wt. (lbs)	Notes
1/3	1725	115/230	180	\$251	SAB	48Y	6.0/3.0	1.5	0.500	Auto	9.9	1.35	20	
1/2	3450	115/208-230	298	\$299	SAB	48	8.6/4.3	1.5	0.500	Auto	9.9	1.25	16	
	1725	115/208-230	1790	\$317	SAB	56	9.2/4.6	1.9	0.625	Auto	9.3	1.25	22	
3/4	3450	115/208-230	430	\$316	SAB	48	9.2/4.6	1.5	0.500	Auto	10.4	1.25	22	
	1725	115/208-230	1893	\$389	Ball	56	11.4/5.7	1.9	0.625	Auto	10.8	1.25	27	
1	3450	115/208-230	431	\$344	SAB	48Z	11.6/5.8	1.9	0.625	Auto	11.3	1.25	22	
	1725	115/208-230	1769	\$476	Ball	56	14.0/7.0	1.9	0.625	Auto	11.8	1.25	30	
	1725	115/208-230	3187C	\$417	SAB	56	14.0/7.0	1.9	0.625	Auto	11.8	1.25	29	80
1 1/2	3450	115/208-230	299	\$464	Ball	56	17.2/9.0	1.9	0.625	Auto	11.9	1.15	32	
	1725	115/208-230	4242	\$514	Ball	56	22.4/11.2	1.9	0.625	Auto	12.8	1.15	35	

Note 78 Class B Insulation

Note 80 Canadian Standard - Connected CCWLE (Reversible)

† All marks shown within this document are properties of their respective owners.

