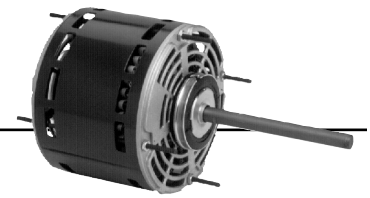


Permanent Split Capacitor Direct Drive Fan & Blower

5.6" Diameter, Open Air Over

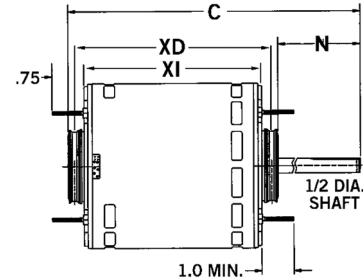


APPLICATIONS:

Residential and commercial direct drive fans and blowers.

FEATURES:

- Stud Extensions On Popular Models
- Designed for use with 370V Capacitors
- Class B Insulation
- 24" Leads
- Continuous Duty, Air Over
- Bearings Have All Angle Thrust System
- Reversible Rotation
- For Flex Mount, Order Catalog # 44; See Page 182
- Automatic Reset Thermal Overload Protector
- Connection and Capacitor Information Furnished in the Nameplate Data
- 2.5" Dia. Hub Rings Included
- All Angle Mount
- **Discount Symbol: DS-3HAC**



Hub Ring Mount (2.5") except as noted, Without Capacitor

HP	RPM/ Spds.	Voltage	Catalog Number	Cap. MFD	Amps	Shaft N	Base XD	Shell XI	Total C	Ship Wt.	Notes	OEM	List
1/4	1075/3	115	1863	7.5	3.5	5.0	5.4	4.9	10.4	10			\$112
	1625/3	115	1690	10.0	2.7	6.0	4.7	4.1	11.1	11.6			\$214
	1075/3	208-230	1971	7.5	1.5	5.0	5.4	4.9	10.4	9			\$114
	1075/3	277	600	4.0	1.6	5.0	5.2	4.6	11.7	13	69		\$236
1/3	1075/3	115	1864	7.5	5.0	5.0	5.6	5.1	10.7	12			\$115
	1625/3	115	1692	15.0	3.7	6.0	4.8	4.3	11.4	13			\$220
	1075/3	208-230	1972	7.5	1.9	5.0	5.6	5.1	10.7	11			\$118
	1075/3	277	601	4.0	2.2	6.0	5.5	5.0	11.9	14	69		\$218
	1625/3	208-230	1693	5.0	2.1	4.5	5.1	4.6	10.7	13			\$150
1/3-1/8	825/2	208-230	5469	7.5	2.4	4.5	-	5.3	9.8	17	72		\$218
1/2	825/2	208-230	8064	20.0	4.4	2.5	6.6	6.1	9.7	20	69	LE	\$249
	1075/3	115	1865	10.0	6.5	5.0	6.4	5.9	11.4	16			\$139
	1625/3	115	1694	20.0	5.5	5.0	5.9	5.3	11.4	15.6	A		\$235
	1075/3	208-230	1973	10.0	2.9	5.0	6.2	5.7	11.7	17			\$144
	1075/3	277	602	6.0	3.4	6.0	5.7	5.2	12.2	15	69		\$299
	1075/3	115	1323	15	5.0	3.5	-	4.8	8.3	12	H11	RH	\$140
1625/3	208-230	1695	7.5	3.0	5.0	5.9	5.3	11.4	17			\$240	
1/2-1/6	1075/4	115	5460	10.0/7.5	7.3	5.5	5.9	5.3	11.3	20	72		\$148
	1075/4	208-230	5461	10/5	3.6	5.0	5.9	5.3	10.8	15	72		\$151
3/4	1625/3	115	1696	15.0	8.6	6.0	5.9	5.4	12.4	20			\$250
	1625/3	208-230	1697	10.0	4.4-4.2	6.0	5.9	5.4	12.4	19	A		\$255
	1075/3	115	8904	15.0	9.5	5.0	6.4	5.9	11.4	11	69		\$159
	1075/3	208-230	8905	15.0	4.0	5.0	6.6	6.1	11.6	17	69		\$160
	1075/3	277	5847	15.0	4.1	6.0	6.7	6.2	13.2	19			\$298
	1075/4	115	3340	7.5	12.1	6.0	5.8	5.3	12.4	18		CA	\$340
	1075/5	208-230	8065	20	5.0	2.5	8.5	8.0	11.4	18			\$606
	1075/4	115	6452	15.0	11.2	5.0	-	5.8	10.8	18	69, H11		\$221
	1075/2	208-230	5471	20/10	4.1	5.0	6.6	6.1	12.1	16	72		\$181
	1075/3	460	LX7930	20	2.3	2.5	5.8	5.3	8.9	17			\$246
3/4-1/5	1075/2	115	5470	20/10	8.1	5.0	6.6	6.1	11.6	17	72		\$177
1	1075/3	115	8906	20.0	12.1	5.0	6.6	6.1	12.2	22	H17		\$298
	1075/3	208-230	8907	20.0	5.6	5.0	6.6	6.1	12.2	22	H17		\$301
	1625/3	115	1699	25.0	11.1	6.0	6.4	5.9	12.9	22	H7		\$265
	1625/3	208-230	1700		5.1	6.0	5.9	5.3	12.4	20			\$278

CA = Carrier LE = Lennox RH=Rheem

Note 69: No Stud Extension

Note A: Class A Insulation

Note H7: 36" Leads, 2.25" Dia. Hubs With 2.5" Dia. Kit Included.

Note H11: Band Mount

Note H17: Class B Insulation, Studs Shaft Side Only, Ball Bearings

Note 72: Includes 4 Holes In Shell For Rheem Mount