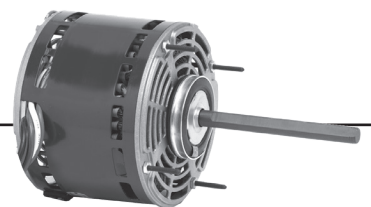


Permanent Split Capacitor Direct Drive Fan & Blower

5.6" Diameter, Open Air Over, High Efficiency

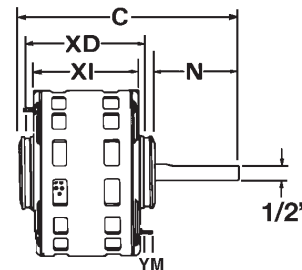


APPLICATIONS:

Designed to meet manufacturer's requirements for use on direct drive fans and blowers.

FEATURES:

- Reversible Rotation (Unless Otherwise Noted)
- Class B Insulation
- Bearings Have All Angle Thrust System
- Continuous Duty, Air Over
- Designed For Use With 370V Capacitors
- 3/6" Line Leads Unless Otherwise Noted
- High Efficiency Economizer® Motors
- Automatic Reset Thermal Overload Protector
- Connection & Capacitor Information Furnished in Nameplate Data
- When Furnished, The Capacitor And Its Mounting Hardware Is Supplied Detached
- 2.5" Diameter Hub Rings Included - See Notes
- **Discount Symbol: DS-3HAC**



Stud or Hub Ring Mount (2.5"), Single Speed

HP	RPM/ Spds.	Voltage	Catalog Number	Bearings	Cap MFD	Amps	Shaft N	Base XD	Shell XI	Total C	Stud YM	Ship Wt.	Notes	OEM	List
1/3	825	208-230	6873	Ball	5.0	2.7	4.5	6.4	5.8	11.4	N/A	17	H10		\$267

Stud or Hub Ring Mount (2.5"), Two Speed

HP	RPM/ Spds.	Voltage	Catalog Number	Bearings	Cap MFD	Amps	Shaft N	Base XD	Shell XI	Total C	Stud YM	Ship Wt.	Notes	OEM	List
1/4	1625/2	460	8944	Ball	5.0	0.8	6.0	N/A	4.6	10.6	0.8	13			\$412
1/3	1075/2	460	8945	Ball	5.0	1.3	6.0	5.3	4.8	11.9	0.8	14	64		\$472
3/4	1075/2	460	8947	Ball	20.0	2.2	6.0	6.1	5.6	12.7	0.8	21	64		\$504

Stud or Hub Ring Mount (2.5"), Three Speed

HP	RPM/ Spds.	Voltage	Catalog Number	Bearings	Cap MFD	Amps	Shaft N	Base XD	Shell XI	Total C	Stud YM	Ship Wt.	Notes	OEM	List
1	1100/3	460	2553	SAB	25.0	3.3	3.5	-	6.8	10.3	N/A	20	62, H11	YK	\$401

Four Speed

HP	RPM/ Spds.	Voltage	Catalog Number	Bearings	Cap MFD	Amps	Shaft N	Base XD	Shell XI	Total C	Stud YM	Ship Wt.	Notes	OEM	List
1/6	1075/4	115	5825	SAB	4.0	2.2	6.0	4.6	4.1	11.1	1.5	11	H1		\$140
	1075/4	208-230	5826	SAB	5.0	1.1-1.0	6.0	4.6	4.1	11.1	1.5	11	H1		\$141
1/4	1075/4	115	5830	SAB	5.0	3.8	6.0	4.9	4.4	11.4	1.5	12	H1		\$141
	1075/4	208-230	5831	SAB	5.0	1.8-1.7	6.0	4.9	4.4	11.4	1.5	12	H1		\$145
1/3	1075/4	115	5835	SAB	7.5	4.6	6.0	5.4	4.9	11.9	1.5	13	H1		\$159
	1075/4	208-230	5836	SAB	6.0	2.3-2.2	6.0	5.2	4.7	11.7	1.5	13	H1		\$160
1/2	1075/4	115	5840	SAB	7.5	7.1	6.0	5.8	5.3	12.4	1.5	19	H1		\$171
	1075/4	208-230	5841	SAB	7.5	3.3-3.1	6.0	5.6	5.1	12.2	1.5	19	H1		\$183
3/4	900/4	115	1125	SAB	10.0	11.9	4.0		6.6	10.6		20	62, H11	IC	\$289
	1075/4	115	5845	SAB	15.0	10.6	6.0	6.2	5.7	12.7	1.5	20	H1		\$227
	1075/5	115	3275	Ball	40.0	10.0	2.5	5.9	5.4	8.9		17	H2	LE	\$246
	1075/4	115	5463	Ball	15.0	10.6	5.0	-	5.8	10.8		20	62, 72	RH	\$272
	1075/4	208-230	5846	SAB	10.0	6.1-5.8	6.0	6.2	5.7	12.7	1.5	20	H1		\$239
1	1100/4	208/230	4670	SAB	20.0	6.0	5.0		6.3	11.3		20	62,84,H9,H11	IC	\$277

IC = ICP LE = Lennox RH = Rheem YK = York

Shaded Pole 5.0" Diameter

HP	RPM/ Spds.	Voltage	Catalog Number	Cap. MFD	Amps	Shaft N	Shell XI	Total C	Shaft Diameter	Rotation	Ship Wt.	Notes	OEM	List
1/8	1000/5	115	1161	5	2.3	5.1	4.3	9.4	0.500	CCWLE	8.3	-	UN	\$132

UN = Unilox®1

Note 64: Includes Capacitor Unmounted

Note 62: Not ECONOMIZER®

Note 72: Includes 4 Holes In Shell For Rheem Mount

Note 84: Non-Reversible

Note H1: 2.25" Dia. Hub Rings With Kit For 2.5" Included

Note H2: 2.5" Hub Rings

Note H10: 50" Line Leads

Note H11: Band Mount

Note H9: 5/8" Shaft