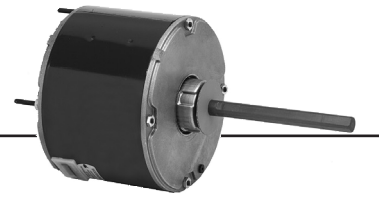


Permanent Split Capacitor Condenser Fan 5.6" Diameter, Totally Enclosed, Air Over (TEAO)

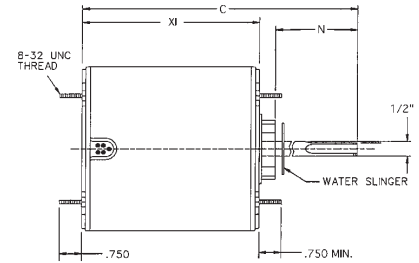


APPLICATIONS:

Residential and commercial condenser unit fan motors to meet manufacturer's requirements.

FEATURES:

- 140°F (60°C) Ambient Design
- Sleeve Bearings Have All Angle Thrust System
- Class B Insulation
- Suitable for Use With 370V Capacitors
- Extended Studs
- 30" Leads
- Hubless Lead End
- Drain Holes Both Ends
- Reversible Rotation
- Automatic Reset Thermal Overload Protector
- Continuous Duty
- **Discount Symbol: DS-3HAC**



Stud Mount, Without Capacitor, 60°C, All Angle Mount

HP	RPM	Voltage	Catalog Number	Bearings	Cap. MFD	Amps	Shaft N	Shell XI	Total C	Rotation	Ship Wt.	Notes	OEM	List
1/12	1100	208-230	3401	SAB	5.0	0.7	1.6	4.1	5.7	CWLE	9	H20	CA	\$151
1/10	825	208-230	1871	SAB	3.0	1.0	6.0	3.8	10.4	-	10			\$237
	1100	208-230	3402	SAB	5.0	0.8	1.6	4.1	5.7	-	9		CA	\$160
1/8	825	208-230	1872	SAB	5.0	0.8	6.0	4.1	10.6	-	11	72		\$150
	825	200-230	1902	Ball	5	.74	1.9	4.4	6.2	CCWLE	10.7		TR	\$164
	825	208-230	5456	SAB	5.0	1.2	3.8	4.1	7.8	-	11	72	RH	\$167
1/6	825	208-230	1873	SAB	5.0	1.0	6.0	4.1	10.6	-	12	72		\$164
	825	208-230	5457	SAB	7.5	1.2	3.8	4.6	8.3	-	13	72	RH	\$177
	825/2	208-230	8673	SAB	5.0	1.0	6.0	4.4	10.9	-	14			\$214
	1075	208-230	1859	SAB	5.0	1.0	5.0	3.8	9.4	-	11			\$101
	1500	208-230	3405	Ball	5.0	0.8	1.6	4.3	6.2	-	9	H20	CA	\$185
1/5	825	200-230	1903	Ball	7.5	.93	2.3	5.1	7.3	CCWLE	15.0		TR	\$175
	1075	208-230	5450	SAB	3.0	1.3	3.7	3.8	7.5	-	11	72, H16	RH	\$168
	1075	208-230	5454	SAB	3.0	1.7	3.7	3.8	8.1	-	11	72	RH	\$135
1/4-1/8	825	208-230	1874	SAB	5.0	2.0	6.0	4.3	10.9	-	13	72		\$164
1/4	825	460	1880	Ball	5.0	1.0	6.0	5.1	11.6	-	14			\$254
	825	575	1276	Ball	5	0.7	5.0	4.5	9.9	Rev.	10			\$256
	850	208-230	1743	SAB	5.0	1.5	2.8	4.6	7.3	-	10	H20	YK	\$167
	825/2	208-230	8674	SAB	7.5	1.5	6.0	4.6	11.1	-	15			\$242
	1075	208-230	1860	SAB	5.0	1.5	5.0	4.1	9.6	-	12			\$105
	1075	208-230	1876	Ball	5.0	1.5	5.0	4.1	9.6	-	11			\$108
	1075	460	3736	Ball	7.5	0.8	6.0	4.6	11.1	-	12			\$235
	1100	208-230	3404	SAB	5.0	1.8	1.6	4.6	6.2	-	12	H20	CA	\$201
	1625	208-230	1890	SAB	5.0	1.4	5.0	4.3	9.9	-	12			\$231

CA = Carrier IC = ICP RH = Rheem YK = York TR = Trane

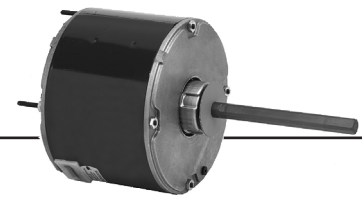
Note 72: Includes 4 Holes in Shell for Rheem Mount

Note H16: CCWLE rotation only

Note H20: CWLE rotation only

*Uses 440V capacitor.

Permanent Split Capacitor Condenser Fan 5.6" Diameter, Totally Enclosed, Air Over (TEAO)



(continued)

HP	RPM	Voltage	Catalog Number	Bearings	Cap. MFD	Amps	Shaft N	Shell XI	Total C	Ship Wt.	Notes	OEM	List
1/3-1/5	825	208-230	1875	SAB	7.5*	2.4-1.4	6.0	5.1	11.6	17	72		\$186
1/3	825/2	208-230	8675	SAB	7.5	2.0	6.0	5.4	11.9	17			\$253
	825	460	1881	Ball	7.5	1.0	6.0	5.6	12.1	17			\$333
	825	575	1296	Ball	7.5	1.1	5.0	5.3	10.9	17			\$335
	1075	208-230	1861	SAB	7.5	2.0	5.0	4.6	10.1	14			\$112
	1075	208-230	5455	SAB	5.0	2.0	3.7	4.1	8.3	13	72	RH	\$144
	1075	208-230	1877	Ball	7.5	2.0	5.0	4.6	10.1	14			\$115
	1075	460	3737	Ball	7.5	1.3	6.0	5.4	11.9	17			\$269
	1075/2	208-230	8670	SAB	7.5	2.2	6.0	4.8	11.4	16	71		\$222
	1625	208-230	1891	Ball	7.5	1.6	5.0	4.6	10.1	13			\$263
1/3-1/6	825/2	208-230	5464	Ball	10 / 7.5	1.9 / 1.2	5.0	5.3	10.3	18	72		\$182
	1075	208-230	3322	SAB	10.0	1.8	5.0	4.6	9.6	11	72		\$115
	1075	208-230	3323	Ball	7.5	2.0	5.0	4.1	9.1	12	72		\$101
	1075/2	208-230	5462	Ball	7.5 / 5.0	2.6 / 1.8	5.0	4.6	9.6	14	72		\$140
1/2	825	208-230	1870	SAB	12.5	2.8	6.0	6.4	12.4	20			\$237
	825	460	1882	Ball	10.0	1.6	6.0	6.3	12.9	21			\$385
	1075	208-230	1862	SAB	10.0	3.1	6.0	5.3	11.9	18			\$124
	1075	208-230	1878	Ball	10.0	3.1	6.0	5.3	11.9	18			\$127
	1075	460	3738	Ball	10.0	1.5	6.0	5.9	12.4	19			\$277
	1075	575	1098	SAB	10.0	1.0	5.0	6.4	11.4	20			\$279
	1075/2	208-230	8671	SAB	10.0	2.9	6.0	4.3	10.8	21	71		\$257
	1625	208-230	1892	SAB	5.0	3.0	5.0	5.1	10.6	15			\$321
	1625/1	575	1198	Ball	7.5	1.0	6.5	5.3	11.9	16.7			\$225
1/2-1/5	1075/2	208-230	5465	Ball	12.5 / 10.0	3.0 / 1.3	5.0	5.3	10.3	19	72		\$177
3/4	1075	208-230	1868	SAB	10.0	4.7	5.0	5.8	10.3	20			\$153
	1075	208-230	1879	Ball	10.0	4.7	5.0	5.8	11.4	21			\$156
	1075	460	3742	Ball	10.0	2.0	6.0	6.4	12.9	22			\$319
	1060	575	1099	SAB	12.5	1.25	5.0	6.4	11.4	18			\$321

RH = Rheem

Note 71: 1.5" Stud Ext., Shaft End only, 104°F (40°C) Ambient, Double Flats

Note 72: Includes 4 Holes in Shell for Rheem Mount