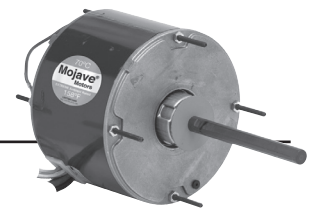


Permanent Split Capacitor MOJAVE® Series Condenser Fan 5.6" Diameter, Totally Enclosed, Air Over (TEAO)

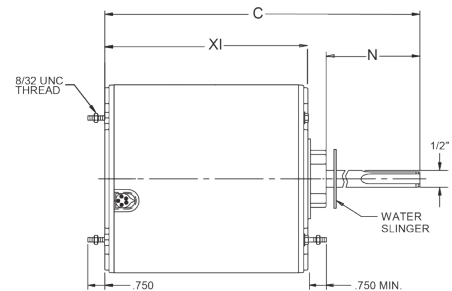


APPLICATIONS:

Residential and commercial condenser unit fan motors in extreme temperature locations.

FEATURES:

- 158°F (70°C) Ambient Design
- Ball Bearings Have All Angle Thrust System
- Class F Insulation
- Suitable for use with 370V Capacitors
- Extended Studs
- 48" Leads
- Hubless Lead End
- Drain Holes Both Ends
- Reversible Rotation
- Automatic Reset Thermal Overload Protector
- Continuous Duty
- **Discount Symbol: DS-3HAC**



Stud Mount, Without Capacitor, Extreme High Ambient Design, All Angle Mount

HP	RPM/ Spd.	Voltage	Catalog Number	Cap. MFD	Amps	Shaft N	Shell XI	Total C	Ship Wt.	Notes	List
1/8	825	208-230	1872H	5.0	0.78	6.0	4.3	10.6	13.7		\$160
1/6	825	208-230	1873H	5.0	1.2	6.0	4.3	10.6	14	H25	\$172
	1075	208-230	1859H	5.0	1	5.0	4.0	9.4	18.1		\$115
1/4	1075	208-230	1860H	5.0	1.7	6.0	4.1	10.6	18		\$113
1/4-1/8	825	208-230	1874H	5.0	2.1	6.0	4.4	10.9	13.0	H25	\$164
1/3-1/6	825/2	208-230	5464H*	7.5	1.9	5	5.3	10.3	18	H43	\$186
	1075/2	208-230	5462H*	5.0	2.6	5	4.6	9.6	18	H43	\$153
	1075	208-230	3323H	7.5	2.0	5	4.3	9.3	10	B	\$111
1/3	1075	208-230	1861H	7.5	2.1	6.0	4.6	11.1	18		\$119
1/3-1/5	825	208-230	1875H	7.5	2.4	6.0	5.3	11.6	17.0	H25	\$196
1/2-1/5	1075/2	208-230	5465H*	10.0	3	5	5.3	10.3	14	H43	\$190
1/2	1075	208-230	1862H	10.0	3.2	6.0	5.3	11.9	18.0		\$133
	825	208-230	1870H	10.0	3.3	6.0	6.1	12.4	17.0		\$250
3/4	1075	208-230	1868H	10.0	4.7	6.0	5.8	12.4	18		\$162
3/4-1/4	1075/2	208-230	5482H*	15.0	4	5	6.3	11.875	14	H43	\$205

460 Volt

HP	RPM/ Spd.	Voltage	Catalog Number	Cap. MFD	Amps	Shaft N	Shell XI	Total C	Ship Wt.	Notes	List
1/4	1075	460	3736H	7.5	0.8	6	4.8	11.1	11		\$248
1/3	1075	460	3737H	7.5	1.3	6	5.6	11.9	15		\$282
1/2	1075	460	3738H	10	1.5	6	5.8	12	18.1		\$291
1/2-1/6	1075	460	5480H*	10	1.3	5	5.562	11.1	19	H43	\$240
3/4	1075	460	3742H	10	2	6	6.6	12.9	18.1		\$327
3/4-1/4	1075	460	5481H*	15	2.2	5	6.3	11.857	22	H43	\$260

575 Volt

HP	RPM/ Spd.	Voltage	Catalog Number	Cap. MFD	Amps	Shaft N	Shell XI	Total C	Ship Wt.	Notes	List
1/4	1075	575	1295H	7.5	0.6	5.0	4.4	9.8	11.4		\$250
1/3	1075	575	1278H	7.5	0.7	5.0	5.2	10.9	10		\$284

* RESCUE® Motors

Note B: Belly Band

Note H25: Includes 4 Holes With Screws In Shell For RHEEM® Mount

Note H43: Side Shell & Lead End Mounting Screws Included In Carton