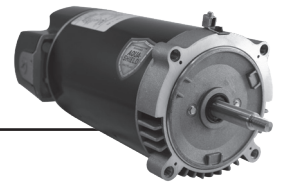


AQUA-SHIELD® EZ48® C-Flange Pool and Spa Motors Switch Design, 5.5" Frame Diameter, Threaded Shaft: Category "J"



FEATURES:

- Two Compartment
- Triple Bearing Protection
- Thermally Protected
- 1081 Design
- Shaft Threads - 7/16-20 UNF-2A
- Class B Insulated
- Open Dripproof
- Continuous Duty
- 50°C Ambient
- 300 Series Stainless Steel Shaft
- Sealed Ball Bearings
- Voltage Selection Device (Dual Voltage Only)



- Optimized internal airflow design minimizes heat and moisture buildup inside the motor
- Internal bearing cover protects the drive/pump end ball bearing from water and debris that may occur inside of the motor
- Three additional layers of drive/pump end bearing protection:
 - Double Sealed Ball Bearing
 - Lip Seal
 - Water Slinger

Standard Efficient, Total Horsepower Rated



THP	RPM	Voltage	Freq	SF Amps	Catalog Number	Motor Frame	Length Less Shaft	Wgt.
0.95	3450	230/115	60	5.5/11.0	AST095	56J	11.25	18
1.25	3450	230/115	60	7.0/14.0	AST125	56J	12.25	24
1.65	3450	230/115	60	8.5/17.0	AST165	56J	12.75	27
2.25	3450	230/115	60	9.5/19.0	AST225*	56J	13.00	29
2.75	3450	208-230	60	12.3-11.3	AST275*	56J	13.00	30

High Efficiency, Total Horsepower Rated



THP	RPM	Voltage	Freq	Amps	Catalog Number	Motor Frame	Length Less Shaft	Wgt.
0.95	3450	230/115	60	4.6/9.2	*ACT095*	56J	11.25	19
1.25	3450	230/115	60	5.7/11.4	ACT125*	56J	11.75	24
1.65	3450	230/115	60	7.6/15.2	ACT165*	56J	12.25	26

* California Energy Commission (CEC) Appliance Regulations (Title 20) compliant

** Contact dealer for full conditions of operation

Catalog numbers are for competitive comparison purposes only.

▲High Efficiency, Capacitor Start/Run Design

† All marks shown within this document are properties of their respective owners.