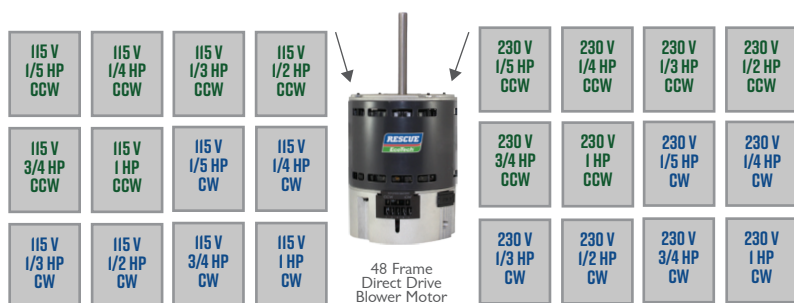


Improving Indoor Air Quality Just Got Easier

INTRODUCING THE RESCUE ECOTECH® ECM DIRECT DRIVE BLOWER MOTOR

LET'S
CLEAR
THE AIR...

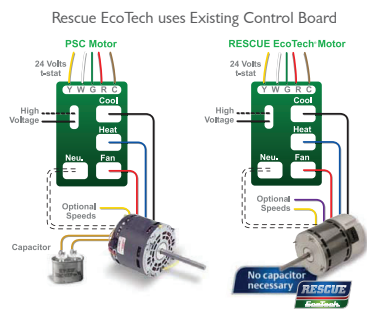
You Can Have 24 PSC Motors on Your Truck
Or You Can Have The **RESCUE EcoTech**



INSTALLATION WITHOUT MODIFICATION

Our exclusive motor-control technology allows the RESCUE EcoTech motor to drop into existing PSC blower applications without complex wiring modifications.

The RESCUE EcoTech motor also provides a quiet continuous air circulation in applications where no "Fan" connection is available in the system control.



For illustration purpose only. Actual connections may vary.



Humidifier



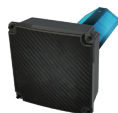
Steam Humidifier



High Efficiency Media Filter



Ultra-Violet Light System



Air Cleaner

IF YOUR HOMEOWNER'S FAN MOTOR ISN'T RUNNING CONTINUOUSLY, THEIR IAQ EQUIPMENT ISN'T EITHER

HOMEOWNER'S SOLUTION

Continuous Filtration. Instruct your homeowner to set their thermostat to the "On" position so the fan in their HVAC system continuously circulates the air over the filter, providing a significant increase in the level of filtration during peak allergy and asthma seasons.



RESCUE ECOTECH MOTOR HAS THE TECHNOLOGY TO EASILY IMPROVE SYSTEM PERFORMANCE AND MAKE YOU A SUCCESSFUL HVAC PROBLEM SOLVER!

5522ET, 5532ET, 5542ET, 5552ET

Nidec Motor Corporation, 2020; All Rights Reserved.
U.S. Motors® is a registered trademark of Nidec Motor Corporation. Nidec Motor Corporation trademarks followed by the ® symbol are registered with the U.S. Patent and Trademark Office.
† All marks shown within this document are properties of their respective owners.
20-8526-01



Nidec
NIDEC MOTOR CORPORATION

RESCUE
THE ULTIMATE TRUCK STOCK MOTOR®

Rely on **US**™

Top 3 Reasons to Install a RESCUE EcoTech Motor

SAVINGS

Save energy! The RESCUE EcoTech motor can be 25% more efficient in heating and cooling modes and up to 75% more efficient in continuous mode.

AVERAGE SAVINGS - WITH CONTINUOUS FAN OPERATION

	1/3 HP	1/2 HP	3/4 HP	1 HP
5 Year Savings	\$851	\$1,123	\$1,659	\$2,583
10 Year Savings	\$1,701	\$2,246	\$3,316	\$5,166

**savings estimated when compared to PSC motor operated continuously, electricity cost of \$0.12/kWh

HEALTH

Improve health with quiet, efficient air filtration. The low continuous fan speed on the RESCUE EcoTech motor provides continuous filtration without the draft or noise of a standard blower motor, all while using less energy than a 100W light bulb.

COMFORT

Increase comfort with reduced noise and temperature differences. The soft start feature of the RESCUE EcoTech motor means no more harsh fan noises and stresses to the system when the system starts. In addition, the low air circulation speed produces very little noise in constant fan mode. The motor's advanced design helps maintain airflow even as the filter becomes full, in turn improving comfort and reducing air stratification.