



OIL, GAS & REFINING INDUSTRY

Nidec Motor Corporation makes it easy to find the right, energy-efficient U.S. MOTORS® brand replacement motor.

The Oil and Gas industry presents some of the harshest challenges for electric motors. From off-shore drilling to the frigid environment of the Canadian oil sands, electric motors are a critical lifeline to the operation of these facilities.

The American Petroleum Institute (API) Monogram Program verifies that manufacturers of production, drilling and refinery equipment are operating in compliance with industry standards.

Nidec Motor Corporation is one of the first companies to earn the prestigious API®† 547 Monogram. In addition to an API 547 product line, Nidec Motor Corporation offers a wide range of U.S. MOTORS® brand motors, which includes IEEE 841 Standard motors, API 610 pump motors, vertical thrust handling motors and hazardous location motors manufactured to ensure optimal oil, gas, and refinery facility uptime.

Looking for a direct replacement fractional or integral motor? Look no further. The U.S. MOTORS line offers an extensive portfolio of replacements and we have the tools—both eBusiness, and motor specifications and technical data, to connect you with the right motor quickly at www.usmotors.com:

- Competitive cross reference tools
 - More than 50,000 cross references by competitor or OEM catalog and model numbers.
- eCatalog search tool (search by ID, features or applications)
- Online chat
- Dimension prints
- Nameplate data
- 3D models
- Performance data
- Wiring diagrams
- Installation and maintenance manuals



The U.S. MOTORS line of products, as well as a full complement of production and facilities maintenance solutions, is available locally and throughout the world:

- On hand inventory at local distributors
- Authorized service stations—warranty and repair

If you have questions, e-mail us at FacilityMRO@nidec-motor.com

Oil, Gas & Refining Industry

Facilities Maintenance Electric Motor Guide



FRACTIONAL AND INTEGRAL
REPLACEMENT MOTORS

Nidec Motor Corporation, 2012. All Rights Reserved.
U.S. MOTORS® is a registered trademark of Nidec Motor Corporation.
Nidec Motor Corporation trademarks followed by the ® symbol are
registered with the U.S. Patent and Trademark Office.

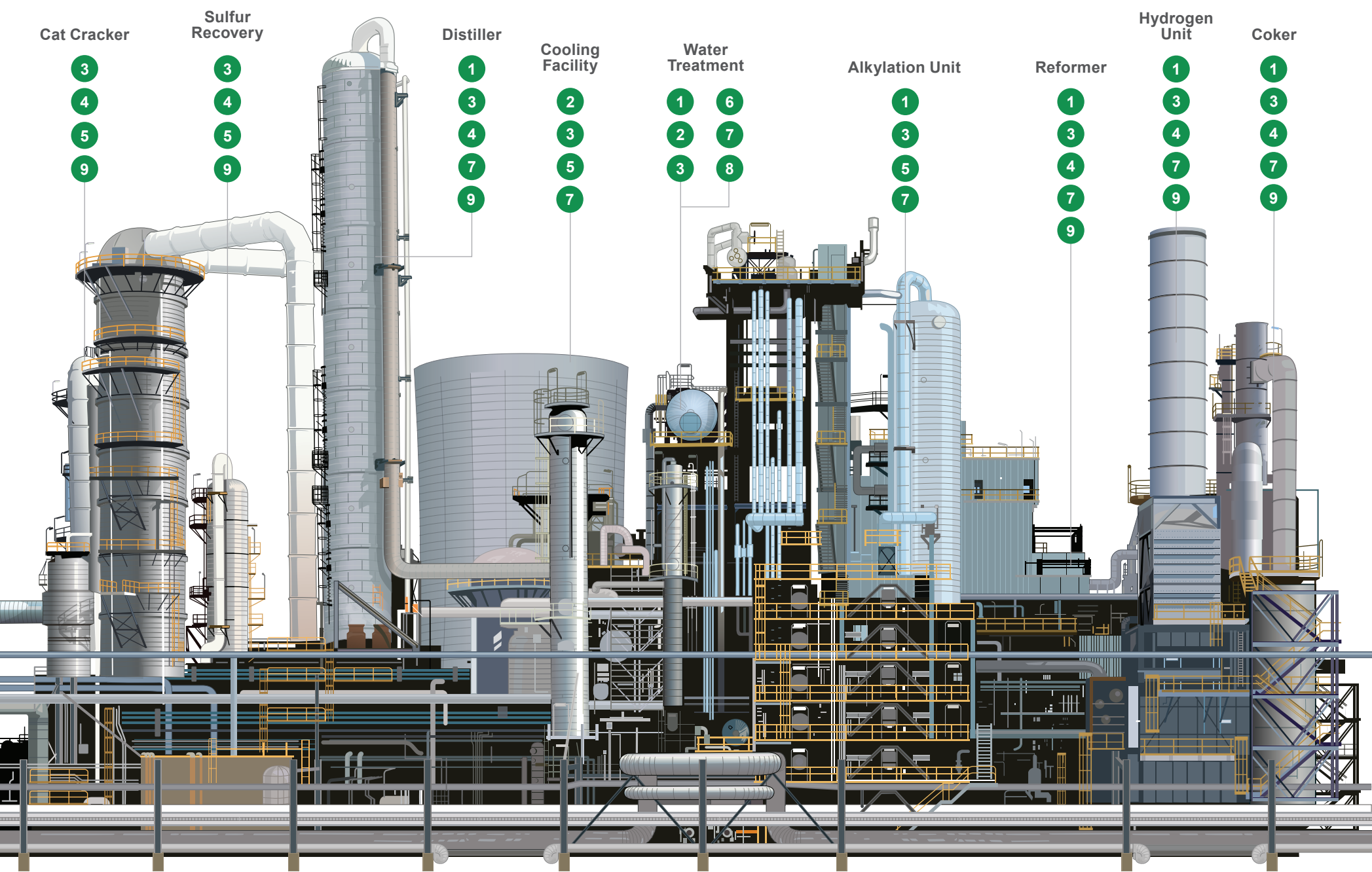
MRO—Oil, Gas & Refining Industry 12/12



8050 W. Florissant Avenue | St. Louis, MO 63136
Phone: 888-637-7333 | Fax: 866-422-7758
www.nidec-motor.com | www.usmotors.com



We make it EASY for you to find and purchase U.S. MOTORS® brand replacement motors!

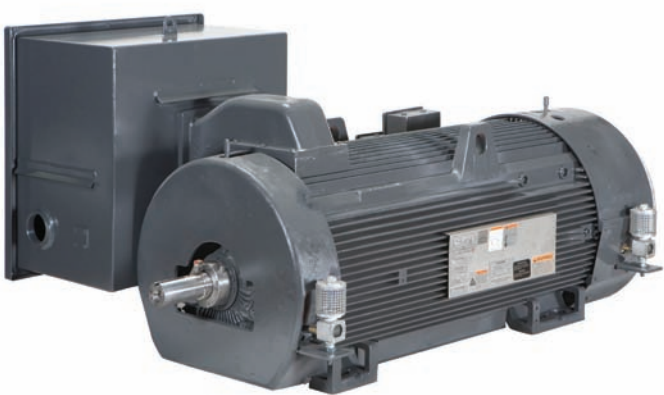


The U.S. MOTORS® brand NEMA Premium® line of high performance commercial and industrial motors is designed to help industry reduce energy consumption and comply with EISA regulations. This line features upgraded Totally Enclosed motors that meet or exceed NEMA Premium® requirements.

Product Overview

1 TITAN® III Horizontal Motors (API®† 547)
Easy to specify, TITAN® III API general purpose motors contain features required for safe, reliable operation in severe duty applications. This motor has received the API Monogram from the Institute. The API endorsement on this product symbolizes our commitment to delivering quality, value and customized solutions to our customers' motor challenges.

- Made in the USA
- 3600, 1800, 1200 and 900 RPM
- High Efficiency
- TEFC Enclosures
- 250–1000 HP
- Severe Duty



2 Vertical Solid Shaft Motors
More than 100 years of vertical motor design experience ensures U.S. MOTORS® brand solid shaft p-base motors satisfy the requirements for water/wastewater treatment industry use. These motors are constructed of high quality materials and are manufactured in a state-of-the-art, ISO9000-2000 facility.

- Standard, Energy and Premium Efficiencies
- 3–5000 HP
- WPI, WPIL, TEFC and Hazardous Location Enclosures
- Severe Duty
- 3600–400 RPM
- 182–9608 Frame
- Designed for high, medium or normal thrust



3 IEEE 841 Motors
Designed to exceed the industry's most stringent IEEE 841 standards, the U.S. MOTORS® brand 841 PLUS® motors are commonly used in severe duty environments for pumps, compressors, fans, blowers, and other material processing applications. These rugged motors are ideal for constant speed or inverter duty applications typically found in the petroleum, chemical, pulp and paper, wastewater, automotive and mining industries.

- 1–500 HP
- 460 and 575 Volts at 60 Hz
- Meets vibration requirements of GM7E-TA
- 3600, 1800, 1200 and 900 RPM
- 143–5812 Frame



4 Hazardous Location

- Single and Three Phase, TEFC
- 1/2 to 250 HP
- 3600, 1800, 1200 and 900 RPM
- 56–449 Frame
- Energy and Premium Efficient
- Class I, Group D; Class I, Groups C and D and Class II, Groups E, F, and G



5 TEFC, Three Phase, CORRO-DUTY®

- 1–400 HP
- 3600, 1800 and 1200 RPM
- 143–449 Frame
- All cast iron construction
- NEMA Premium® efficient



6 TITAN® WPIL Horizontal

- Three Phase
- 150–4000 HP
- 3600, 1800, 1200, 900, 720 and 600 RPM
- 449–9610 Frame
- 460–6600 Volts
- Ball or sleeve bearings available



7 TITAN® TEFC Horizontal

- Three Phase
- 150–1000 HP
- 3600, 1800, 1200, 900, 720 and 600 RPM
- 449–5812 Frame
- 460–6600 Volts
- Ball or sleeve bearings available



8 Vertical HOLLOSHAFT®

- Three Phase, WPI, WPIL, TEFC and Hazardous Location
- 3–4000 HP
- 3600, 1800, 1200, 900, 720, 600 and 514 RPM
- 182–9608 Frame
- Designed for high thrust



9 TITAN® Hazardous Location

- Three Phase
- 150–700 HP
- 3600, 1800, 1200, 900, 720 and 600 RPM
- 5008–5811 Frame
- 460–6600 Volts
- Ball bearings



†All marks shown within this document are properties of their respective owners.
*For details, refer to: www.usmotors.com