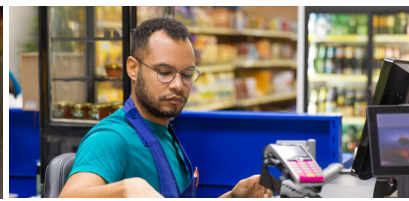


# Supermarkets and Grocery Stores

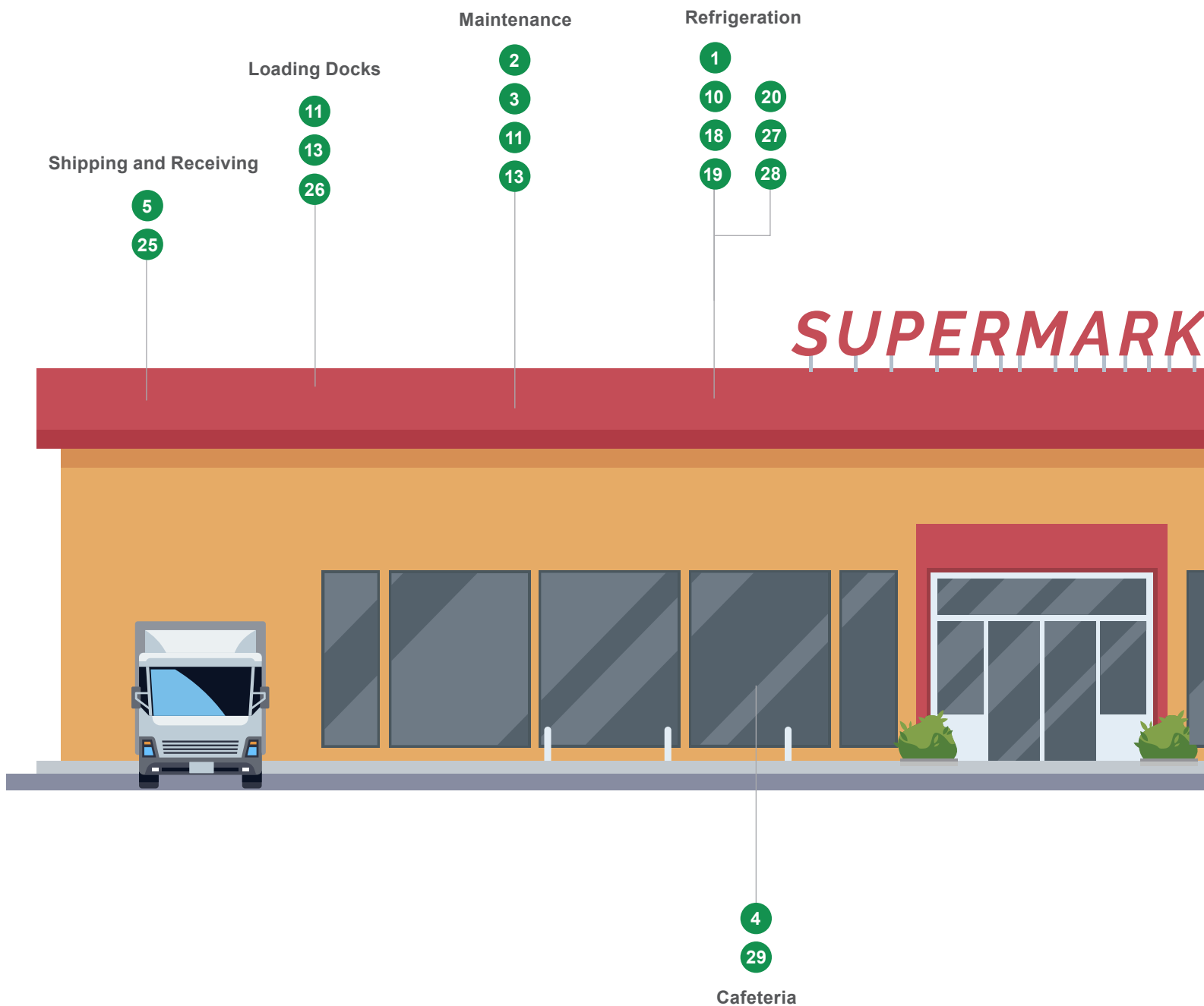
Facilities Maintenance Electric Motor Guide



FRACTIONAL AND INTEGRAL  
REPLACEMENT MOTORS

**Nidec**  
NIDEC MOTOR CORPORATION

We make it EASY for you to find and purchase  
U.S. MOTORS® brand replacement motors!



The U.S. MOTORS® brand NEMA Premium® line of high performance commercial and industrial motors is designed to help the industry reduce energy consumption and comply with EISA regulations. This line features upgraded Open Drip-Proof and Totally Enclosed motors that meet or exceed NEMA Premium® requirements.

ET



## Product Overview (listed in alphabetical order)

1

### 3.3 Ref/Evap Motor

- Open Air Over (OPAO) or Totally Enclosed Air Over (TEAO)
- 1/10-1/70 HP
- 1550 RPM
- Permanent Split Capacitor



2

### Air Circulator Motors

- Single Phase, OAO and TEAO
- 1/15, 1/10 HP and 1/4 – 1/2 HP
- 1800, 1200, and 900 RPM
- 42 – 56 Frame
- Single and two speed options
- Oscillating and non-oscillating options



3

### Air Compressor

- Single Phase, ODP
- 1/2 – 5 HP
- 3600 RPM
- 56, 143 and 184 Frame
- High breakdown torque



4

### Carbonator Pump

- Single Phase, ODP
- 1/4 – 1/2 HP
- 1800 RPM
- 48 Frame



5

### C-Face: ODP, TEFC and Hazardous Location

- Single Phase, Split Phase & Capacitor Start
- Three Phase, Footed and Footless options
- 1/12 – 60 HP
- 3600, 1800 and 1200 RPM
- 56 – 326 Frame
- Standard, Energy and Premium Efficient



6

### Close Coupled Pump

- Single and Three Phase, ODP, TEFC and Hazardous Location
- 1 – 60 HP
- 3600 and 1800 RPM
- 143 – 326 Frame
- JM and JP shafts available



7

### Cooling Tower

- Three Phase, TEFC and TEAO
- 2 – 100 HP
- 1800, 1200, 1800/900 and 1200/600 RPM
- 145 – 447 Frame
- Single and two speed
- Energy efficient and NEMA Premium<sup>®</sup>/inverter duty
- Meets specifications for Baltimore Aircoil Company<sup>®</sup>, Evapco<sup>®</sup> and Marley<sup>®</sup> cooling tower motors



8

### Elevator Duty: Dry Hydraulic

- Three Phase
- 20 – 125 HP
- 1800 RPM
- 254 – 404 Frame



9

### Elevator Duty: Submersible

- Single and Three Phase
- 3 – 75 HP
- 3600, 1800 and 1200 RPM
- Z and L32 flange mounting



10

### Evaporator Application ECM

- 1/3 - 1/5HP
- 500 and 1075 RPM
- 60°C Ambient
- 24V for Speed and Rotation Taps



**11 Fan and Blower**

- Single Phase, ODP, OAO and TEAO
- 1/6 – 1-1/2 HP
- 1725, 1075 and 825 RPM
- Single, two, three and four speed
- Belt drive and direct drive

**12 Fire Pump Motor**

- Three Phase, ODP
- 7-1/2 – 250 HP
- 3600 and 1800 RPM
- 184 – 445 Frame
- UL<sup>®</sup> listed for fire pump application
- Available in horizontal frame and vertical JP close coupled pumps

**13 Gate and Door Motors**

- Single and Three Phase, ODP and TEFC
- 1/3 – 1 HP
- 1800 RPM
- 56 and 56C Frame

**14 ODP and TEFC, Single Phase, Capacitor Start**

- 1/8 – 10 HP
- 3600, 1800 and 1200 RPM
- 48 – 215 Frame
- Rigid welded and cradle bases
- C-Face Footed and Footless
- Automatic or manual reset thermal overload protector options

**15 ODP and TEFC, Single Phase, Split Phase**

- 1/12 – 3/4 HP
- 3600, 1800, 1200 and 900 RPM
- 48 – 56 Frame
- Rigid welded and cradle bases
- Single and two speed options
- C-Face Footed and Footless
- Automatic or manual reset thermal overload protector options

**16 ODP, Three Phase**

- 1/4 – 400 HP
- 3600, 1800, 1200 and 900 RPM
- 48 – 449 Frame
- Energy and NEMA Premium<sup>®</sup>† efficient

**17 Package Terminal A/C Heat Pump**

- Single Phase, OAO
- 1/30 – 3/4 HP
- 1625, 1050, 1100 and 925 RPM
- 5.0", 5.6" and 6.3" diameter
- Single, two, three and four speed

**18 Reach-In Cooler ECM (EC5411E & EC5412E)**

- 4-25W EC Watt Motor
- 1550-1725 RPM
- Dual Voltage, IP65, IP66 and IP67 rated
- 3 Hole / 4 Hole mount on back motor
- Meets ATEX Directive 94/9 EC
- Dual Voltage, Dual Rotation (EC5414E)
- 58mm OEM Fan Pack Replacements assembled with blade and shroud available (EC5407FP & EC5472FP)

**19 Refrigeration Condenser Fan PSC**

- 1/20 – 1/2 HP
- 42 and 48 Frame
- Capacitor Included
- Permanent Split Capacitor

**20 Shaded Pole Watt Motor**

- 2.5W-50W
- 1550 RPM 3.3" dia
- CCWLE or CWLE
- Cast Iron Frame

**21 TEFC, Three Phase, 841 Plus**

- 1 – 400 HP
- 3600, 1800 and 1200 RPM
- C-Face Footed and Footless
- 143 Frame
- Meets IEEE<sup>®</sup>† 841 GM7E-TA specifications
- Five-year limited warranty\*
- NEMA Premium<sup>®</sup>† efficient
- VBXX<sup>®</sup>† bearing isolators by Inpro/Seal<sup>®</sup>† help protect bearings

NEMA  
Premium

**22 TEFC, Three Phase, CORRO DUTY**

- 1 – 400 HP
- 3600, 1800 and 1200 RPM
- C-Face Footed and Footless
- 143 Frame
- All cast iron construction
- NEMA Premium<sup>®</sup>† efficient

NEMA  
Premium

**23 TEFC, Three Phase, HOSTILE DUTY**

- 1 – 350 HP
- 3600, 1800, 1200 and 900 RPM
- C-Face Footed and Footless
- 143 – 449 Frame
- Energy and NEMA Premium<sup>®</sup>† efficient
- Cast iron frame and brackets
- Ball and roller bearing options

NEMA  
Premium

**24 TEFC, Three Phase, UNIMOUNT<sup>®</sup>**

- 1/4 – 30 HP
- 3600, 1800, 1200 and 900 RPM
- 56 – 286 Frame
- Energy and NEMA Premium<sup>®</sup>† efficient
- C-Face, Footed and Footless and removable base

NEMA  
Premium

**25 UNIMOUNT<sup>®</sup> Brake Motor**

- Three Phase, TEFC with Brake Added
- 1/3 – 20 HP
- 1800 and 1200 RPM
- 56 – 256 Frame
- Rigid base, C-Face, Footed and Footless

**26 Unit Heater**

- Single Phase, TEAO
- 1/15 – 3/4 HP
- 1550 and 1750 RPM
- 48 and 56 Frame
- Cradle and stud mount

**27 Varitough Commercial Condenser Fan**

- Three Phase Inverter Duty
- 1/2 – 2 HP
- 575, 825 & 1140 RPM
- 56YZ, 70°C Ambient Design

**28 Walk-In Cooler ECM (EC5408E)**

- 1/15 – 1/25 HP
- 1550-1625 RPM 3.3" EC Motor
- Dual Voltage, Dual Rotation
- Meets ATEX Directive 94/9 EC
- IP65, IP66 and IP67 rated
- 27" Lyall/OEM Plug
- Available as three stud option (EC5407E)

**29 Washdown Motors**

- Painted, Paint-Free and Stainless Steel
- 3450, 1725 and 1150 RPM
- 1/2 – 10 HP
- 56 – 215 Frame



†All marks shown within this document are properties of their respective owners.

\*For details, refer to: [www.usmotors.com](http://www.usmotors.com)





## U.S. MOTORS® makes it easy to find the right, energy-efficient replacement motor.

Grocery stores and supermarkets are paramount to the success of revitalizing the world each day. Consumers require a single outlet from agriculture sources for all household mealtime necessities. Stores and marts provide expedient access to foods and fluids while providing the very same resources in a preserved state until the moment of purchase. From reach-in/walk-in coolers/freezers to rooftop units, electric motors and drives are operating grocery facilities 24 hours a day 7 days a week. Furthermore, replacement or retrofit opportunities can significantly reduce the energy and operating yield from the local grocery market.

Nidec Motor Corporation offers a full line of fractional and integral U.S. MOTORS® brand motors to keep your building running smoothly and without downtime. Our line spans every building system from hydraulic elevators, water support and supply systems to HVAC motors for indoor air quality and comfort.

Looking for a direct replacement fractional or integral motor? The U.S. MOTORS line offers an extensive portfolio of replacements and we have the tools—both eBusiness and motor specifications and technical data, to connect you with the right motor quickly at [ecatalog.motorboss.com](http://ecatalog.motorboss.com):

- Competitive cross reference tools
  - More than 50,000 cross references by competitor or OEM catalog and model numbers.
- eCatalog search tool (search by ID, features or applications)
- Online chat
- Dimension prints
- Nameplate data
- 3D models
- Performance data
- Wiring diagrams
- Installation and maintenance manuals



The U.S. MOTORS line of products, as well as a full complement of production and facilities maintenance solutions, is available locally and throughout the world:

- On-hand inventory at local distributors
- Authorized service stations—warranty and repair

*If you have questions, e-mail us at [dlnmcstlhvacrcs@nidec-motor.com](mailto:dlnmcstlhvacrcs@nidec-motor.com)*

Nidec Motor Corporation, © 2020; All Rights Reserved.  
U.S. MOTORS® is a registered trademark of Nidec Motor Corporation.  
Nidec Motor Corporation trademarks followed by the ® symbol are  
registered with the U.S. Patent and Trademark Office.

MRO—Supermarkets and Grocery Stores Rev. 06/2020 20-8513-01



8050 W. Florissant Avenue | St. Louis, MO 63136  
Phone: 855-487-6686 | Fax: 800-899-2887  
[www.nidec-motor.com](http://www.nidec-motor.com) | [www.usmotors.com](http://www.usmotors.com)