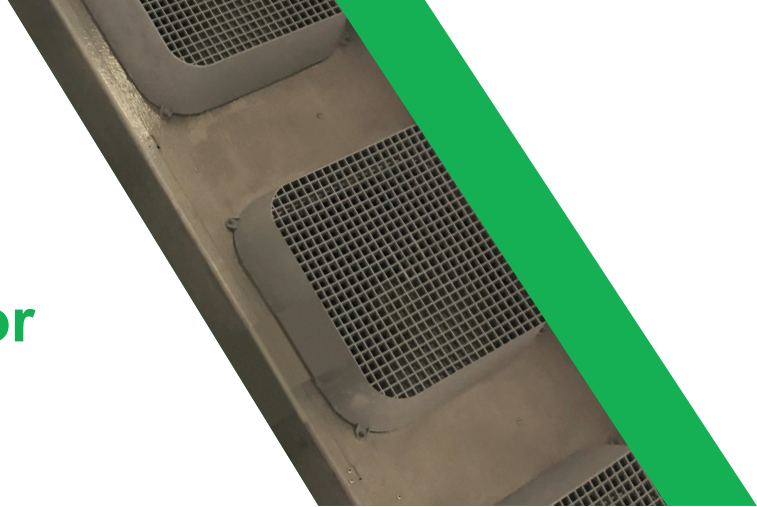


RESCUE EcoTech® Refrigeration Evaporator Fan Motor



Product Overview and Options

The RESCUE EcoTech® Refrigeration Evaporator Fan Motor is developed to stand up to harsh environments and temperatures found in commercial refrigeration units. The RESCUE EcoTech® Refrigeration Evaporator Fan Motor provides the increased efficiencies required for refrigerator evaporator applications. The motor features a Lyall plug and is designed with a line-start feature that allows for quicker installation with fewer components out-of-the-box.

Key Features and Benefits

- Line-voltage starting motor
- Totally enclosed air over (TEAO) motor and horizontal mounting position with drain holes
- -40°C min 60°C max ambient operating temperature

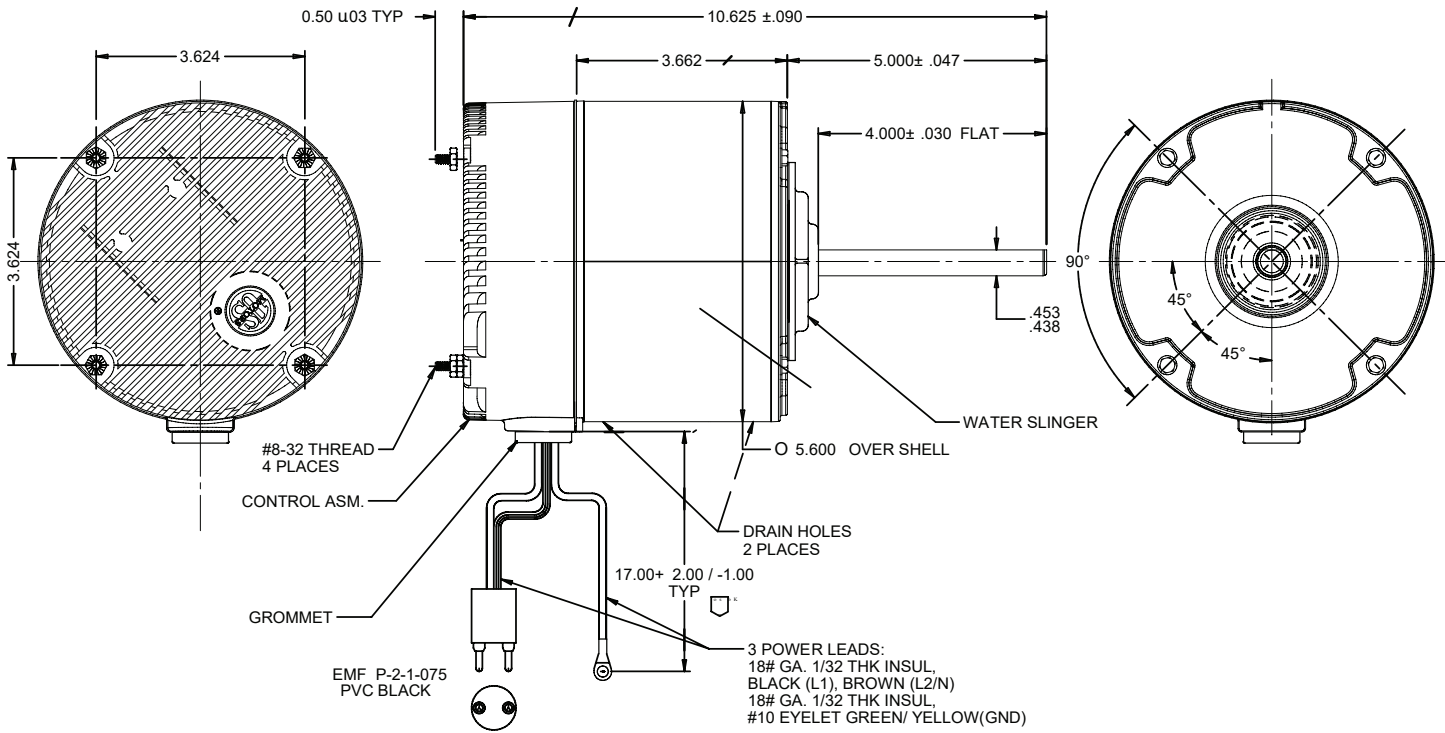
Product Specifications

- Horsepower: 1/3-1/5 HP
- Voltage: 1Ø, 208 - 230 Volts
- Speeds: 1145 RPM
- Rotation: CCW LE
- Operation Mode: Constant Speed
- Frame: NEMA 48
- Enclosure: Totally Enclosed Air Over (TEAO)
- Efficiency: Up to 75%
- Horizontal belly band and rear stud mount
- Lyall Plug



HP	RPM	Voltage	Catalog	Amps	Bearing	Rotation	Shaft Length	Total Length
1/3 - 1/5	1145	208-230	5563EOR	2.5	Ball	CCW Lead End	5.0"	10.625"

Dimension Print



Nidec, 2020; All Rights Reserved.
Nidec Motor Corporation trademarks followed by
the ® symbol are registered with U.S. Patent and
Trademark Office

