



Revcor Fan Blades

Revcor Company Overview

Manufacturing quality fan blades for more than 75 years, Revcor was founded in 1946 by the Reichwein and Kochevar families; and is now second- and third-generation owned and operated. The company is headquartered in Carpentersville, Illinois.

Revcor provides revolutionary airflow solutions combining the right product and the right service level to meet customer needs. They engineer the air-moving system, including the blower wheel and housing or the fan blade and venturi, along with the motor specifications, to offer the best-cost solutions for airflow-dependent systems.

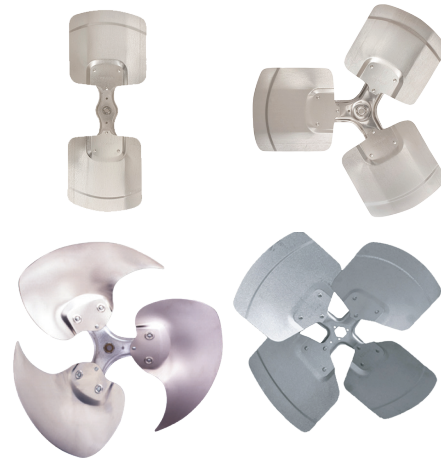
The Benefits of Using Revcor Blades

- Revcor is the OEM for greater than 75% of all axial fans used in Lennox, Trane, Carrier, Rheem, Goodman, Johnson Controls and Nortek applications.
- Replacing a damaged fan blade or blower wheel with the original equipment ensures the OEM's approved outputs remain at an optimal level for the application.
- Installing will-fit components will deoptimize outputs and could lead to thousands of dollars of system repairs in the future.
- With every change in degree of pitch on an axial blade, you will see a 3-5% increase/decrease in output, both flow and power. These fluctuations will harm the system.
- Revcor competitors do not offer exact replacements for the Revcor OEM products originally installed into applications. These will-fit products will reduce performance resulting in systems having to run harder and longer to make up for the reduction. This will cause premature failure of other components, leading to a poor customer experience that will cause lost sales in the future.

Product Features

2, 3 & 4 Blade Heavy Duty Fan Replacements

- 2, 3 or 4 blades
- 0.500" bore for 18", 20", 22", 24", and 26" dia fans
- 0.625" bore for 30" dia fan
- Various pitch degrees
- Fixed hub
- CW and CCW rotations (Facing Discharge)
- Single Set Screw
- Aluminum and Galvanized blades with steel spiders
- Paddle and swept versions



Axial Insert ISTA Approved

