

Special Application Close Coupled Pump Three Phase Open Drip Proof (ODP) NEMA[®] Premium Efficient



**NEMA
Premium**

DE1, DE3,
DE4, DEF4

APPLICATIONS:

For the specific requirements of centrifugal pumps where the pump impeller is mounted directly on the motor shaft. Used in damp, dusty or dirty environments.

FEATURES:

- Class F Insulation, Class B Rise At Service Factor
- Rolled Steel Frame
- Aluminum End Shields 140-250, Cast Iron End Shields 280-320
- Oversized Ball Bearings w/Locked Shaft End Construction
- Premasked Mylar Nameplate
- F1 Assembly Position
- Regreaseable Bearings 180 Frame & Up, Lifting Provisions 210 Frame & Up
- Double Shielded Bearings
- 40°C Ambient, NEMA[®] Design B Performance On 60 Hertz Sine Wave Power
- "JM" Shaft For Mechanical Seal
- "JM" Shaft on 210 Frame and Smaller; JP Shaft on 250 and 280 Frame
- 208v will not be marked on DOE regulated spread-voltage motors. Refer to online data

JM Shaft - Footed

HP	RPM	Voltage	Frame	Catalog Number	List	Discount Symbol	SF	"C" Dim. (inches)	Ship Wt. (lbs)	Full Load Eff.	Full Load Amps	Notes
3/4	1200	208-230/460	143JM	DJ34P3DM	\$655	DS-3POP	1.15	15.0	30	80.0	2.8-2.8/1.4	03
1	1800	200	143JM	DJ1P2HM	\$487	DS-3POP	1.15	15.0	30	85.5	3.6	
	1800	208-230/460	143JM	DJ1P2DM	\$487	DS-3POP	1.15	15.0	30	85.5	3.1-3.1/1.5	03
	1200	208-230/460	145JM	DJ1P3DM	\$655	DS-3POP	1.15	15.0	35	82.5	4/4/2002	03
1 1/2	3600	208-230/460	143JM	DJ32P1DM	\$519	DS-3POP	1.15	15.0	30	85.5	4.2-3.8/1.9	03
	1800	200	145JM	DJ32P2HM	\$513	DS-3POP	1.15	15.0	35	86.5	4.8	
	1800	208-230/460	145JM	DJ32P2DM	\$513	DS-3POP	1.15	15.0	35	86.5	4.4-4.1/2.1	03
2	1200	208-230/460	182JM	DJ32P3DM	\$660	DS-3POP	1.15	16.0	50	86.5	5.2-5.3/2.6	03
	3600	208-230/460	145JM	DJ2E1DM	\$524	DS-3FPO	1.15	15.0	35	84.0	5.6-5.1/2.5	03,16,NNP,LA
	3600	208-230/460	145JM	DJ2P1DM	\$567	DS-3POP	1.15	15.0	35	85.5	5.5-5/2.5	03
	1800	200	145JM	DJ2P2HM	\$563	DS-3POP	1.15	15.0	35	86.5	6.3	
	1800	208-230/460	145JM	DJ2P2DM	\$563	DS-3POP	1.15	15.0	35	86.5	5.9-5.6/2.8	03
	1800	575	145JM	DJ2E2GM	\$482	DS-3FPO	1.15	15.0	37	84.0	2.4	NNP,LA
3	1800	575	145JM	DJ2P2GM	\$563	DS-3POP	1.15	15.0	35	85.5	2.2	
	1200	208-230/460	184JM	DJ2P3DM	\$739	DS-3POP	1.15	16.0	60	87.5	6.4-6.3/3.1	03
	3600	208-230/460	145JM	DJ3P1DM	\$582	DS-3POP	1.15	15.0	35	85.5	8.3-7.4/3.7	03
	1800	200	182JM	DJ3P2HM	\$598	DS-3POP	1.15	16.0	50	89.5	8.8	
	1800	208-230/460	182JM	DJ3P2DM	\$598	DS-3POP	1.15	16.0	50	89.5	8.3-7.7/3.8	03
	1200	208-230/460	213JM	DJ3P3DM	\$941	DS-3POP	1.15	18.0	90	88.5	9.4-8.9/4.4	03
5	3600	200	182JM	DJ5E1HM	\$718	DS-3FPO	1.15	17.0	50	85.5	14.8	NNP,LA
	3600	200	182JM	DJ5P1HM	\$620	DS-3POP	1.15	16.0	50	88.5	14.1	
	3600	208-230/460	182JM	DJ5P1DM	\$620	DS-3POP	1.15	16.0	50	87.5	13.8-12.5/6.2	03
	1800	200	184JM	DJ5P2HM	\$645	DS-3POP	1.15	16.0	60	89.5	14.2	
	1800	208-230/460	184JM	DJ5P2DM	\$645	DS-3POP	1.15	16.0	60	89.5	13.7-12.4/6.2	03
	1800	575	184JM	DJ5P2GM	\$645	DS-3POP	1.15	16.0	60	89.5	4.9	
7 1/2	1200	208-230/460	215JM	DJ5P3DM	\$1,234	DS-3POP	1.15	19.0	105	89.5	15.2-14.5/7.3	03
	3600	208-230/460	184JM	DJ7P1DM	\$968	DS-3POP	1.15	16.0	60	88.5	20.3-18.1/9.1	03
	1800	200	213JM	DJ7P2HM	\$943	DS-3POP	1.15	18.0	90	91.0	21.4	
	1800	208-230/460	213JM	DJ7P2DM	\$943	DS-3POP	1.15	18.0	90	91.0	20.2-18.5/9.3	03
1800	575	213JM	DJ7P2GM	\$943	DS-3POP	1.15	18.0	90	91.0	7.3		

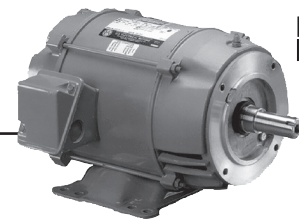
Note 03 60/50 Hz rated with no derate on HP; 230/460 volt 60 Hz ratings operate on 190/380 volt 50 Hz, 460V 60 Hz ratings operate on 380V 50 Hz; Full 60 & 50 Hz data on Nameplate

Note 16 Motors marked 208-230/460 volts may not meet all NEMA[®] (MG-1) performance standards when operated at 208 volts

Note LA Limited Availability
Note NNP Non-NEMA[®] Premium



Special Application Close Coupled Pump Three Phase Open Drip Proof (ODP) NEMA[®] Premium Efficient


NEMA
Premium

DE1

(continued)

HP	RPM	Voltage	Frame	Catalog Number	List	Discount Symbol	SF	"C" Dim. (inches)	Ship Wt. (lbs)	Full Load Eff.	Full Load Amps	Notes
10	3600	200	213JM	DJ10P1HM	\$1,132	DS-3POP	1.15	18.0	90	90.2	28	
	3600	208-230/460	213JM	DJ10P1DM	\$1,132	DS-3POP	1.15	18.0	90	90.2	27.1-24.3/12.2	03
	3600	575	213JM	DJ10E1GM	\$1,076	DS-3FPO	1.15	18.0	113	88.5	10.2	NNP,LA
	3600	575	213JM	DJ10P1GM	\$1,132	DS-3POP	1.15	18.0	90	90.2	9.7	
	1800	200	215JM	DJ10P2HM	\$1,147	DS-3POP	1.15	19.0	105	91.7	28.1	
	1800	208-230/460	215JM	DJ10P2DM	\$1,147	DS-3POP	1.15	19.0	105	92.4	26.3-23.8/11.9	03
15	3600	208-230/460	215JM	DJ15P1DM	\$1,555	DS-3POP	1.15	19.0	105	90.2	40-36/18	03
	1800	230/460	254JM	DJ15P2EM	\$1,712	DS-3POP	1.15	21.1	150	93.0	37/18.3	03
20	3600	230/460	254JM	DJ20P1EM	\$1,874	DS-3POP	1.15	21.1	150	91.7	46/23.1	03
	3600	575	254JM	DJ20E1GM	\$1,611	DS-3FPO	1.15	24.0	170	90.2	18.9	NNP,LA
	3600	575	254JM	DJ20P1GM	\$1,874	DS-3POP	1.15	21.1	150	91.0	18.7	
	1800	230/460	256JM	DJ20P2EM	\$1,970	DS-3POP	1.15	22.4	160	93.0	47/23.6	03
25	3600	230/460	256JM	DJ25P1EM	\$2,567	DS-3POP	1.15	22.4	160	91.7	57/28.7	03
	1800	208-230/460	284JM	DJ25P2DM	\$2,435	DS-3POP	1.15	26.0	225	93.6	58/29	03
30	3600	208-230/460	284JM	DJ30P1DM	\$2,901	DS-3POP	1.15	26.0	225	92.4	79-68/34	03
	1800	208-230/460	286JM	DJ30P2DM	\$2,892	DS-3POP	1.15	26.0	250	94.1	77-69/34	03
40	3600	208-230/460	286JM	DJ40P1DM	\$3,171	DS-3POP	1.15	26.0	250	93.0	104-90/45	03
	3600	575	286JM	DJ40P1GM	\$3,171	DS-3POP	1.15	26.0	250	93.0	36	
	1800	208-230/460	324JM	DJ40P2DM	\$3,178	DS-3POP	1.15	28.0	385	94.1	102-91/46	03
50	3600	208-230/460	324JM	DJ50P1DM	\$3,567	DS-3POP	1.15	28.0	385	93.0	130-117/59	03
	1800	208-230/460	326JM	DJ50P2DM	\$3,725	DS-3POP	1.15	28.0	460	94.5	126-113/56	03
60	3600	208-230/460	326JM	DJ60P1DM	\$4,916	DS-3POP	1.15	28.0	460	93.6	152-134/67	03

JM Shaft - Footless

HP	RPM	Voltage	Frame	Catalog Number	List	Discount Symbol	SF	"C" Dim. (inches)	Ship Wt. (lbs)	Full Load Eff.	Full Load Amps	Notes
1	1800	208-230/460	143JM	DJ1P2DU	\$570	DS-3POV	1.15	16.0	30	85.5	3.2-3.1/1.6	03
1 1/2	1800	208-230/460	145JM	DJ32P2DU	\$581	DS-3POV	1.15	16.0	35	86.5	4.4-4.2/2.1	03
2	1800	208-230/460	145JM	DJ2P2DU	\$642	DS-3POV	1.15	16.0	35	86.5	5.9-5.6/2.8	03
3	1800	208-230/460	182JM	DJ3P2DU	\$758	DS-3POV	1.15	17.0	50	89.5	8.3-7.7/3.8	03
5	1800	208-230/460	184JM	DJ5P2DU	\$898	DS-3POV	1.15	17.0	82	89.5	13.7-12.4/6.2	03
7 1/2	1800	208-230/460	213JM	DJ7P2DU	\$1,188	DS-3POV	1.15	19.0	90	91.0	20.2-18.5/9.3	03
10	3600	208-230/460	213JM	DJ10P1DU	\$1,420	DS-3POV	1.15	19.0	90	90.2	27.1-24.3/12.2	03
	1800	208-230/460	215JM	DJ10P2DU	\$1,400	DS-3POV	1.15	19.0	105	91.7	26.3-23.8/11.9	03
15	3600	208-230/460	215JM	DJ15P1DU	\$1,809	DS-3POV	1.15	19.0	105	90.2	40-36/18	03
	1800	230/460	254JM	DJ15P2EU	\$2,055	DS-3POV	1.15	21.9	150	93.0	37/18.3	
20	3600	230/460	254JM	DJ20P1EU	\$2,249	DS-3POV	1.15	25.5	150	91.7	46/23.1	03

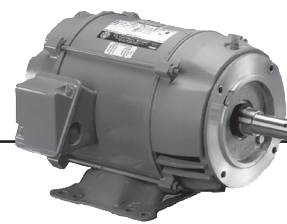
Note 03 60/50 Hz rated with no derate on HP; 230/460 volt 60 Hz ratings operate on 190/380 volt 50 Hz, 460V 60 Hz ratings operate on 380V 50 Hz; Full 60 & 50 Hz data on Nameplate

Note LA Limited Availability

Note NNP Non-NEMA[®] Premium



Special Application Close Coupled Pump Three Phase Open Drip Proof (ODP) NEMA[®] Premium Efficient



NEMA
Premium

DE1

(continued)

JP Shaft - Footed

HP	RPM	Voltage	Frame	Catalog Number	List	Discount Symbol	SF	"C" Dim. (inches)	Ship Wt. (lbs)	Full Load Eff.	Full Load Amps	Notes
1	1800	208-230/460	143JP	DJ1P2DP	\$487	DS-3POP	1.15	18.0	30	85.5	3.2-3.1/1.6	03
1 1/2	1800	208-230/460	145JP	DJ3P2DP	\$513	DS-3POP	1.15	18.0	35	86.5	4.4-4.2/2.1	03
2	1800	208-230/460	145JP	DJ2P2DP	\$563	DS-3POP	1.15	18.0	35	86.5	5.9-5.6/2.8	03
3	1800	208-230/460	182JP	DJ3P2DP	\$598	DS-3POP	1.15	19.0	50	89.5	8.3-7.7/3.8	03
5	1800	208-230/460	184JP	DJ5P2DP	\$645	DS-3POP	1.15	19.0	60	89.5	13.7-12.4/6.2	03
7 1/2	1800	208-230/460	213JP	DJ7P2DP	\$943	DS-3POP	1.15	22.0	90	91.0	20.2-18.5/9.3	03
	1200	230/460	254JP	DJ7P3EP	\$1,565	DS-3POP	1.15	24.0	150	91.0	18.9/9.5	03
10	3600	208-230/460	213JP	DJ10P1DP	\$1,132	DS-3POP	1.15	22.0	90	90.2	27.1-24.3/12.2	03
	1800	208-230/460	215JP	DJ10P2DP	\$1,147	DS-3POP	1.15	23.0	105	91.7	26.3-23.8/11.9	03
	1200	230/460	256JP	DJ10P3EP	\$2,036	DS-3POP	1.15	25.3	160	91.7	25/12.5	03
15	3600	200	215JP	DJ15P1HP	\$1,555	DS-3POP	1.15	23.0	105	90.2	41	
	3600	208-230/460	215JP	DJ15P1DP	\$1,555	DS-3POP	1.15	23.0	105	90.2	40-36/18	03
	1800	200	254JP	DJ15P2HP	\$1,569	DS-3POP	1.15	27.4	150	93.0	42	
	1800	230/460	254JP	DJ15P2EP	\$1,569	DS-3POP	1.15	24.0	150	93.0	37/18.3	03
20	3600	230/460	254JP	DJ20P1EP	\$1,882	DS-3POP	1.15	24.0	150	91.7	46/23.1	03
	3600	200	254JP	DJ20P1HP	\$1,882	DS-3POP	1.15	24.0	150	91.7	53	
	1800	230/460	256JP	DJ20P2EP	\$2,012	DS-3POP	1.15	25.3	160	93.0	47/23.6	03
	1800	200	256JP	DJ20P2HP	\$2,012	DS-3POP	1.15	25.3	160	93.0	54	
25	3600	230/460	256JP	DJ25P1EP	\$2,461	DS-3POP	1.15	25.3	160	91.7	57/28.7	03
	3600	200	256JP	DJ25P1HP	\$2,461	DS-3POP	1.15	25.3	160	91.7	67	
	1800	575	284JP	DJ25E2GP	\$2,406	DS-3FPO	1.15	29.0	213	91.7	24.4	NNP,LA
	1800	575	284JP	DJ25P2GP	\$2,435	DS-3POP	1.15	29.0	225	93.6	23.1	
	1800	575	284JP	DJ25P2GP	\$2,435	DS-3POP	1.15	29.0	225	93.6	23.1	
30	3600	208-230/460	284JP	DJ30P1DP	\$2,901	DS-3POP	1.15	29.0	225	92.4	79-68/34	03
	1800	208-230/460	286JP	DJ30P2DP	\$2,892	DS-3POP	1.15	29.0	250	94.1	77-69/34	03
40	3600	208-230/460	286JP	DJ40P1DP	\$3,171	DS-3POP	1.15	29.0	250	93.0	104-90/45	03
	3600	575	286JP	DJ40E1GP	\$3,512	DS-3FPO	1.15	29.0	320	93.0	36	NNP,LA
	3600	575	286JP	DJ40P1GP	\$3,171	DS-3POP	1.15	29.0	250	93.0	36	
	1800	208-230/460	324JP	DJ40P2DP	\$3,178	DS-3POP	1.15	30.0	454	94.1	102-91/46	03
50	3600	208-230/460	324JP	DJ50P1DP	\$3,567	DS-3POP	1.15	30.0	454	93.0	130-117/59	03
	1800	208-230/460	326JP	DJ50P2DP	\$3,725	DS-3POP	1.15	30.0	454	94.5	126-113/56	03
60	3600	208-230/460	326JP	DJ60P1DP	\$4,915	DS-3POP	1.15	30.0	460	93.6	152-134/67	03

Note 03 60/50 Hz rated with no derate on HP; 230/460 volt 60 Hz ratings operate on 190/380 volt 50 Hz, 460V 60 Hz ratings operate on 380V 50 Hz; Full 60 & 50 Hz data on Nameplate

Note 06 Dual voltage ratings, Part Winding Start on low voltage only

Note 16 Motors marked 208-230/460 volts may not meet all NEMA[®] (MG-1) performance standards when operated at 208 volts

Note LA Limited Availability

Note NNP Non-NEMA[®] Premium



BRAKEMOTORS

GENERAL PURPOSE
SINGLE PHASE

HVAC

WASHDOWN

AGRICULTURE

COMMERCIAL PUMP
MOTORS

CLOSE COUPLED
PUMP MOTORS

FIRE PUMP
MOTORS

POOL & SPA
MOTORS

RESIDENTIAL
WATER PUMP

ELEVATOR
GATE & DOOR

Special Application Close Coupled Pump Three Phase Open Drip Proof (ODP) NEMA[®] Premium Efficient


**NEMA
Premium**

DE1

(continued)

Westcoast Shaft - Footed

HP	RPM	Voltage	Frame	Catalog Number	List	Discount Symbol	SF	"C" Dim. (inches)	Ship Wt. (lbs)	NEMA Nom. Eff.	Full Load Amps	Notes
7 1/2	1800	208-230/460	213TCZ	DJ7P2DJ	\$943	DS-3POP	1.15	21.0	90	91.0	20.2-18.5/9.3	03
10	3600	208-230/460	213TCZ	DJ10P1DJ	\$1,132	DS-3POP	1.15	21.0	90	90.2	27.1-24.3/12.2	03
	1800	208-230/460	215TCZ	DJ10P2DJ	\$1,147	DS-3POP	1.15	22.0	105	91.7	26.3-23.8/11.9	03
15	3600	208-230/460	215TCZ	DJ15P1DJ	\$1,555	DS-3POP	1.15	22.0	105	90.2	40-36/18	03

Note 03 60/50 Hz rated with no derate on HP; 230/460 volt 60 Hz ratings operate on 190/380 volt 50 Hz, 460V 60 Hz ratings operate on 380V 50 Hz; Full 60 & 50 Hz data on Nameplate

