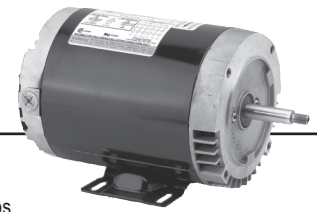


Special Application Commercial Pump Three Phase Open Drip Proof (ODP) C-Face



APPLICATIONS:

For use on chiller, condensate, and other HVAC duty pumps, booster and irrigation pumps, dishwasher and part washer pumps, watering and de-watering pumps, and other commercial duty pumping applications.

FEATURES:

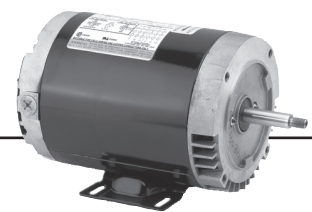
- Double Sealed Ball Bearings On All 56 Frame Commercial Duty Pump Motors;
- Double Shielded Ball Bearings On All Others
- Continuous Duty
- 60 Hertz & 60/50 Hertz
- 50/60 Hertz Motors have 1.0 Service Factor on 50 Hertz
- 40°C Ambient
- Suitable for Wye-Delta Start 250-Frame and Larger
- NEMA® 'C' Flange Mounting
- Shaft Threads for 56J Mount: 7/16-20 UNC-2A
- Premium 303 S.S. on 56J; Mount & Carbon Steel on All Others
- 208v will not be marked on DOE regulated spread-voltage motors. Refer to online data

HP	RPM	Voltage	Frame	Catalog Number	List	Discount Symbol	Base (Feet)	SF	"C" Dim. (inches)	Ship Wt. (lbs)	NEMA Nom. Eff.	Max Amps	Notes
1/2	3600	208-230/460	56J	EE155B	\$256	DS-3F	Rigid	1.60	10.9	21	83.3	2.6-2.4/1.2	98
	3600	208-230/460	56J	EE155	\$251	DS-3F	No	1.60	10.9	20	83.3	2.6-2.4/1.2	98
	3600	208-230/460	56C	EE254	\$244	DS-CPMP	No	1.60	10.8	15	43.3	2.8-2.7/1.35	98
	3600	575	56J	EE155-5	\$263	DS-CPMP	No	1.60	11.3	16	-	1.1	
3/4	3600	208-230/460	56J	EE446B	\$454	DS-3F	Rigid	1.50	10.9	20	85.0	3.7-3.6/1.8	98
	3600	208-230/460	56J	EE446	\$449	DS-3F	No	1.50	10.9	19	85.0	3.7-3.6/1.8	98
	3600	208-230/460	56C	EE508	\$444	DS-3F	No	1.50	11.3	20	55.5	3.8-3.6/1.8	98
	3600	575	56J	EE446-5	\$449	DS-3F	No	1.25	10.9	35	-	1.2	
	1800	208-230/460	56J	EE045	\$402	DS-3F	Rigid	1.25	12.4	27	-	3.0-2.9/1.4	98
1	3600	208-230/460	56J	EE506B	\$474	DS-3F	Rigid	1.40	11.9	22	85.5	4.4-4.2/2.1	98
	3600	208-230/460	56J	EE506	\$469	DS-3F	No	1.40	11.9	22	85.5	4.4-4.2/2.1	98
	3600	208-230/460	56C	EE511	\$464	DS-3F	No	1.40	11.6	17	67.5	4.6-4.6/2.3	98
	3600	575	56J	EE506-5	\$479	DS-CPMP	No	1.40	12.1	19	76.3	2.4	
	1800	208-230/460	143TC	D1P2DC	\$474	DS-3E	Removeable	1.15	13.3	30	85.5	3.5-3.3/1.7	
	1800	208-230/460	56HC	D1P2AHC	\$433	DS-3E	Rigid	1.15	12.4	26	83.5	3.7-3.4/1.7	
1 1/2	3600	208-230/460	56J	EE607B	\$546	DS-3F	Rigid	1.30	12.4	18	69.1	6.0-5.8/2.9	
	3600	208-230/460	56HC	D32P1AHC	\$500	DS-3E	Rigid	1.15	11.9	32	84.0	4.9/2.4	
	3600	208-230/460	56J	EE607	\$541	DS-3F	No	1.30	12.4	17	69.1	6.0-5.8/2.9	98
	3600	208-230/460	56C	EE609	\$537	DS-3F	No	1.00	11.4	28	82.5	5.8/2.9	98
	3600	575	56J	EE607-5	\$349	DS-CPMP	No	1.00	11.9	30	82.5	1.9	
	1800	208-230/460	145TC	D32P2DC	\$499	DS-3E	Removeable	1.15	13.3	35	86.5	5-4.6/2.3	
	1800	208-230/460	56C	EE930	\$352	DS-CPMP	No	1.15	12.6	15	-	5.4-4.8/2.4	98
2	3600	208-230/460	145TC	D2P1DC	\$551	DS-3E	Removeable	1.15	12.8	35	85.5	6.2-5.6/2.8	
	3600	208-230/460	56HC	D2P1AHC	\$494	DS-3E	Rigid	1.15	11.9	32	85.5	6.3-5.8/2.9	
	3600	208-230/460	56J	EE733B	\$715	DS-3F	Rigid	1.20	12.9	26	88.3	6.8-6.4/3.2	98
	3600	208-230/460	56C	EE612B	\$402	DS-CPMP	Rigid	1.15	11.9	30	85.5	6.3-5.7/2.9	98
	3600	208-230/460	56J	EE733	\$710	DS-3F	No	1.20	12.9	25	88.3	6.8-6.4/3.2	
	3600	208-230/460	56C	EE612	\$705	DS-3F	No	1.15	11.9	93	85.5	6.3-5.7/2.9	98
	3600	575	56J	EE733-5	\$719	DS-3F	No	1.20	12.4	25	85.5	2.6	
	1800	208-230/460	145TC	D2P2DC	\$548	DS-3E	Removeable	1.15	12.8	35	86.5	6.6-6.2/3.1	
3	3600	208-230/460	145TC	D3P1DC	\$566	DS-3E	Removeable	1.15	13.3	35	85.5	9.5-8.4/4.2	
	3600	208-230/460	56J	EE734B	\$785	DS-3F	Rigid	1.15	14.0	35	89.8	9.6-9.4/4.7	
	3600	208-230/460	56C	EE736	\$775	DS-3F	No	1.15	11.4	38	87.5	9-8.4/4.2	
	3600	208-230/460	56J	EE734	\$780	DS-3F	No	1.15	13.9	37	89.79	9.6-9.4/4.7	
	3600	575	56J	EE734-5	\$790	DS-3F	No	1.15	13.4	25	87.5	3.4	
	1800	208-230/460	56J	EE2113	\$572	DS-3F	Rigid	1.15	14.8	43	-	10.1-9.7/4.8	
5	1800	208-230/460	182TC	D3P2DC	\$582	DS-3E	Rigid	1.15	14.3	50	90.2	9.4-8.6/4.3	
	3600	208-230/460	182TC	D5P1DC	\$603	DS-3E	Rigid	1.15	14.3	50	86.5	16.1-14.6/7.3	
	3600	208-230/460	56J	EE833B	\$850	DS-3F	Rigid	1.00	14.9	35	88.5	13.7-13.0/6.5	
1800	208-230/460	184TC	D5P2DC	\$627	DS-3E	Rigid	1.15	15.8	60	89.5	15.9-14.1/7.1		

Note 98 50/60 Hz Motor



Special Application Commercial Pump Three Phase Open Drip Proof (ODP) C-Face



(continued)

HP	RPM	Voltage	Frame	Catalog Number	List	Discount Symbol	Base (Feet)	SF	"C" Dim. (inches)	Ship Wt. (lbs)	NEMA Nom. Eff.	Max Amps	Notes
7 1/2	3600	208-230/460	184TC	D7P1DC	\$942	DS-3E	Rigid	1.15	15.8	60	88.5	23.8-20.8/10.4	
	1800	208-230/460	213TC	D7P2DC	\$917	DS-3E	Rigid	1.15	16.8	100	91.0	23.3-21/10.5	
10	3600	208-230/460	213TC	D10P1DC	\$1,101	DS-3E	Rigid	1.15	16.8	100	90.2	32-28/14	
	1800	208-230/460	215TC	D10P2DC	\$1,116	DS-3E	Rigid	1.15	18.3	110	92.4	30-27.2/13.6	
15	3600	208-230/460	215TC	D15P1DC	\$1,513	DS-3E	Rigid	1.15	18.3	100	90.2	0-42/20.8	
	1800	230/460	254TC	D15P2EC	\$1,526	DS-3E	Rigid	1.15	19.6	150	93.0	37/18.3	02,03
20	3600	230/460	254TC	D20P1EC	\$1,831	DS-3E	Rigid	1.15	19.6	150	91.7	46/23.1	02,03
	1800	230/460	256TC	D20P2EC	\$1,957	DS-3E	Rigid	1.15	20.8	160	93.0	47/23.6	
25	3600	230/460	256TC	D25P1EC	\$2,394	DS-3E	Rigid	1.15	20.8	160	91.7	57/28.7	02,03
	1800	230/460	284TC	D25P2EC	\$2,446	DS-3PO	Rigid	1.15	25.6	225	93.6	58.0/29.2	
30	3600	230/460	284TSC	D30P1ESC	\$2,861	DS-3PO	Rigid	1.15	24.3	225	91.7	69.0/34	
	1800	208-230/460	286TC	D30P2DC	\$2,861	DS-3E	Rigid	1.15	24.9	350	94.1	89-79/40	02,03
40	3600	230/460	286TSC	D40P1ESC	\$3,115	DS-3PO	Rigid	1.15	24.3	250	92.4	90.0/45	
	1800	208-230/460	324TC	D40P2DC	\$3,424	DS-3E	Rigid	1.15	27.3	385	94.1	118-105/52	02,03
50	3600	230/460	324TSC	D50P1ESC	\$3,778	DS-3E	Rigid	1.15	26.0	385	93.0	112.0/56.0	
	1800	208-230/460	326TC	D50P2DC	\$3,921	DS-3E	Rigid	1.15	27.3	460	94.5	147-130/65	02,03

Note 02 Suitable for Wye-Delta start on voltages shown

Note 03 60/50 Hertz rated with no derate on HP; 230/460 volt 60 Hz ratings operate on 190/380 volt 50 Hz, 460V 60 Hz ratings operate on 380V 50 Hz; Full 60 & 50 Hz data on Nameplate

