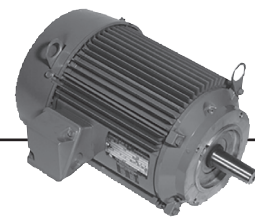


Special Application Commercial Pump Three Phase Totally Enclosed Fan Cooled (TEFC) C-Face



APPLICATIONS:

For use on chiller, condensate, and other HVAC duty pumps, booster and irrigation pumps, dishwasher and part washer pumps, watering and de-watering pumps, and other commercial duty pumping applications.

FEATURES:

- Totally Enclosed, 50 Hertz Motors supplied with CE Markings
- Double Sealed Ball Bearings On All 56 Frame Commercial Duty Pump Motors
- Double Shielded Ball Bearings On All Other Motors
- Continuous Duty
- 60 Hertz & 60/50 Hertz
- 50/60 Hertz Motors have 1.0 Service Factor on 50 Hertz
- 40°C Ambient
- Shaft Slinger On Pulley End
- NEMA[®] 'C' Flange Mounting
- Premium 303 S.S. on 56J Mount: 7/16-20 UNC-2A
- Shaft Threads for 56J Mount: 7/16-20 UNC-2A
- 208v will not be marked on DOE regulated spread-voltage motors. Refer to online data

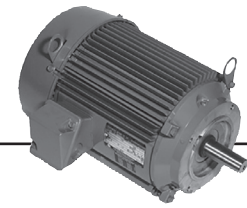
| HP | RPM | Voltage | Frame | Catalog Number | List | Discount Symbol | Base (Feet) | SF | "C" Dim. (inches) | Ship Wt. (lbs) | Full Load Eff. | Max Amps | Notes |
|------|------|-------------|-------------|----------------|--------|-----------------|-------------|-------|-------------------|----------------|----------------|----------------|--------------|
| 1/4 | 1800 | 208-230/460 | 56C | U14S2DCR | \$266 | DS-3RST | No | 1.25 | 10.8 | 23 | 70.0 | 0-1.1/0.5 | 16 |
| | 1800 | 575 | 56C | U14P2GC | \$319 | DS-3RST | Rigid | 1.25 | 10.8 | 30 | 74.0 | 0.4 | |
| | 1200 | 208-230/460 | 56C | T14S3DCR | \$308 | DS-3RST | No | 1.15 | 11.3 | 27 | 75.5 | 1.6-1.6/0.8 | |
| | 1200 | 575 | 56C | U14P3GC | \$407 | DS-3RST | Rigid | 1.25 | 10.8 | 30 | 72.0 | 0.6 | |
| 1/3 | 3600 | 208-230/460 | 56C | T13S1ACR | \$279 | DS-3RST | No | 1.15 | 10.8 | 32 | 74.6 | 1.8-1.9/1.0 | |
| | 1800 | 208-230/460 | 42CZ | T13S2D4ZCR | \$266 | DS-3RST | No | 1.00 | 10.4 | 9 | 65.0 | 1.5-1.5/0.75 | |
| | 1800 | 208-230/460 | 56C | U13S2ACR | \$266 | DS-3RST | No | 1.25 | 10.8 | 25 | 75.5 | 1.4-1.3/0.7 | 16 |
| | 1800 | 575 | 56C | U13P2GC | \$365 | DS-3RST | Rigid | 1.25 | 10.8 | 30 | 74.0 | 0.5 | |
| | 1800 | 575 | 56C | T13S2GCR | \$266 | DS-3RST | No | 1.15 | 11.4 | 26 | 75.3 | 0.62 | |
| | 1200 | 208-230/460 | 56C | T13S3DCR | \$346 | DS-3RST | No | 1.15 | 11.3 | 32 | 77.0 | 1.7-1.7/0.9 | |
| | 1200 | 575 | 56C | U13P3GC | \$455 | DS-3RST | Rigid | 1.25 | 10.8 | 30 | 72.0 | 0.8 | |
| | 1/2 | 3600 | 208-230/460 | 56J | EE283B | \$311 | DS-3RST | Rigid | 1.60 | 11.2 | 26 | 80.1 | 2.8-2.7/1.35 |
| | 3600 | 208-230/460 | 56C | T12S1ACR | \$291 | DS-3RST | No | 1.15 | 10.9 | 32 | 64.0 | 2.34-2.34/1.17 | |
| | 3600 | 208-230/460 | 56J | EE283 | \$296 | DS-3RST | No | 1.60 | 11.2 | 17 | 80.1 | 2.8-2.7/1.35 | 98 |
| | 3600 | 575 | 56C | EE283-5 | \$296 | DS-3RST | No | 1.60 | 11.16 | 40 | - | .87 | |
| | 3600 | 575 | 56C | U12P1GC | \$386 | DS-3RST | Rigid | 1.25 | 12.1 | 30 | 74.0 | 0.6 | |
| | 1800 | 208-230/460 | 56C | U12P2DCR | \$378 | DS-3RST | No | 1.25 | 12.1 | 30 | 82.5 | 1.8/0.9 | 03 |
| | 1800 | 208-230/460 | 56C | U12S2ACR | \$291 | DS-3RST | No | 1.25 | 10.8 | 25 | 75.5 | 2.1-2/1 | 16 |
| | 1800 | 208-230/460 | 56C | EE256 | \$341 | DS-CPMP | No | 1.15 | 11.1 | 22 | 75.0 | 2.2-2.0/1.0 | 98 |
| | 1800 | 575 | 56C | U12P2GC | \$397 | DS-3RST | Rigid | 1.25 | 10.8 | 30 | 78.5 | 0.9 | |
| | 1800 | 575 | 56C | U12P2GCR | \$378 | DS-3RST | No | 1.25 | 10.8 | 30 | 78.5 | 0.9 | |
| | 1200 | 208-230/460 | 56C | U12S3ACR | \$378 | DS-3RST | No | 1.25 | 10.8 | 25 | 72.0 | 2.5-2.3/1.2 | 16 |
| | 1200 | 575 | 56C | U12P3GC | \$495 | DS-3RST | Rigid | 1.25 | 12.1 | 30 | 75.5 | 0.9 | |
| 3/4 | 3600 | 208-230/460 | 56J | EE515B | \$324 | DS-3RST | Rigid | 1.50 | 11.9 | 22 | 82.7 | 3.7-3.6/1.8 | 98 |
| | 3600 | 208-230/460 | 56C | U34S1ACR | \$304 | DS-3RST | No | 1.25 | 10.8 | 27 | 75.5 | 0-2.6/1.3 | 16 |
| | 3600 | 208-230/460 | 56J | EE515 | \$309 | DS-3RST | No | 1.50 | 11.9 | 17 | 82.7 | 3.7-3.6/1.8 | 98 |
| | 3600 | 575 | 56C | U34P1GC | \$402 | DS-3RST | Rigid | 1.25 | 12.1 | 30 | 77.0 | 0.8 | |
| | 3600 | 575 | 56C | U34P1GCR | \$384 | DS-3RST | No | 1.25 | 12.1 | 30 | 77.0 | 0.8 | |
| | 3600 | 575 | 56J | EE515-5PE | \$387 | DS-3RST | No | 1.25 | 12.6 | 30 | 77.0 | 1 | |
| | 1800 | 208-230/460 | 56J | EE586 | \$345 | DS-3RST | Rigid | 1.25 | 12.4 | 23 | 81.7 | 3.0-2.9/1.5 | 03,98 |
| | 1800 | 208-230/460 | 56C | U34P2DCR | \$408 | DS-3RST | No | 1.25 | 12.1 | 30 | 84.0 | 2.3/1.1 | 03 |
| | 1800 | 208-230/460 | 56C | U34S2ACR | \$314 | DS-3RST | No | 1.25 | 10.8 | 28 | 78.5 | 3.1-3/1.5 | 16 |
| | 1800 | 575 | 56C | U34P2GC | \$427 | DS-3RST | Rigid | 1.25 | 10.8 | 30 | 81.5 | 1.1 | |
| | 1800 | 575 | 56C | U34P2GCR | \$408 | DS-3RST | No | 1.25 | 10.8 | 30 | 81.5 | 1.1 | |
| | 1200 | 575 | 143TC | U34P3G14C | \$585 | DS-3RST | Rigid | 1.25 | 12.1 | 30 | 82.5 | 1.3 | |
| | 1200 | 208-230/460 | 56C | U34S3ACR | \$449 | DS-3RST | No | 1.15 | 12.8 | 32 | 80.5 | 3.4-3.4/1.7 | |
| | 1200 | 575 | 56C | U34P3GC | \$585 | DS-3RST | Rigid | 1.25 | 12.1 | 30 | 82.5 | 1.3 | |
| | 1200 | 575 | 56C | U34P3GCR | \$566 | DS-3RST | No | 1.25 | 12.1 | 30 | 82.5 | 1.3 | |
| | 1 | 3600 | 208-230/460 | 56C | U1P1DC | \$503 | DS-3RST | Rigid | 1.25 | 13.1 | 30 | 81.5 | 3.6-3.2/1.6 |
| 3600 | | 208-230/460 | 56C | U1P1DCR | \$488 | DS-3RST | No | 1.25 | 13.1 | 30 | 81.5 | 3.6-3.2/1.6 | 03 |
| 3600 | | 208-230/460 | 56J | EE516B | \$365 | DS-3RST | No | 1.40 | 11.2 | 17 | 77.0 | 4.4-4.2/2.1 | 98 |
| 3600 | | 208-230/460 | 56J | EE516 | \$350 | DS-3RST | No | 1.40 | 11.2 | 28 | 77.0 | 4.4-4.2/2.1 | 98 |
| 3600 | | 575 | 56C | U1P1GCR | \$488 | DS-3RST | No | 1.25 | 10.8 | 30 | 80.0 | 1.3 | |
| 3600 | | 575 | 56C | U1P1GC | \$503 | DS-3RST | No | 1.25 | 13.1 | 50 | 81.5 | 1.3 | |
| 3600 | | 575 | 56J | EE516-5 | \$350 | DS-3F | No | 1.15 | 12.4 | 40 | 77.0 | 3.5-3.4/1.7 | |
| 1800 | | 208-230/460 | 143TC | U1P2DC | \$503 | DS-3RST | Rigid | 1.25 | 13.1 | 30 | 85.5 | 0-3.4/1.7 | 03 |
| 1800 | | 208-230/460 | 143TC | U1P2DCR | \$488 | DS-3RST | No | 1.25 | 12.1 | 30 | 85.5 | 0-3.4/1.7 | 03 |
| 1800 | | 575 | 143TC | U1P2GC | \$503 | DS-3RST | Rigid | 1.25 | 13.1 | 30 | 85.5 | 1.3 | |
| 1800 | | 575 | 143TC | U1P2GCR | \$488 | DS-3RST | No | 1.25 | 13.1 | 30 | 85.5 | 1.3 | |
| 1800 | | 208-230/460 | 56J | EE684 | \$357 | DS-3RST | Removeable | 1.15 | 13.4 | 26 | 85.5 | 3.6-3.7/1.8 | 03,98 |
| 1800 | | 208-230/460 | 56C | U1P2DFC | \$440 | DS-3RST | Rigid | 1.25 | 13.1 | 30 | 85.5 | 3.7-3.4/1.7 | 03 |
| 1800 | | 208-230/460 | 56C | U1P2DFCR | \$425 | DS-3RST | No | 1.25 | 13.1 | 30 | 85.5 | 3.7-3.4/1.7 | 03 |
| 1800 | | 575 | 56C | U1P2GFC | \$440 | DS-3RST | Rigid | 1.25 | 13.1 | 30 | 85.5 | 1.3 | 03 |
| 1800 | | 575 | 56C | U1P2GFCR | \$425 | DS-3RST | No | 1.25 | 13.1 | 30 | 85.5 | 1.3 | 03 |

Note 03 60/50 Hz rated with no derate on HP; 230/460 volt 60 Hz ratings operate on 190/380 volt 50 Hz, 460V 60 Hz ratings operate on 380V 50 Hz; Full 60 & 50 Hz data on Nameplate
 Note 16 Motors marked 208-230/460 volts may not meet all NEMA[®] (MG-1) performance standards when operated at 208 volts
 Note 98 50/60 Hz Motor



BRAKEMOTORS
 GENERAL PURPOSE SINGLE PHASE
 HVAC
 WASHDOWN
 AGRICULTURE
 COMMERCIAL PUMP MOTORS
 CLOSE COUPLED PUMP MOTORS
 FIRE PUMP MOTORS
 POOL & SPA MOTORS
 RESIDENTIAL WATER PUMP
 ELEVATOR GATE & DOOR

Special Application Commercial Pump Three Phase Totally Enclosed Fan Cooled (TEFC) C-Face



(continued)

| HP | RPM | Voltage | Frame | Catalog Number | List | Discount Symbol | Base (Feet) | SF | "C" Dim. (inches) | Ship Wt. (lbs) | Full Load Eff. | Max Amps | Notes |
|-------|-------------|-------------|-------------|----------------|---------|-----------------|-------------|-------|-------------------|----------------|----------------|-------------|-------------|
| 1 | 1200 | 208-230/460 | 145TC | U1P3DC | \$655 | DS-3RST | Rigid | 1.25 | 13.1 | 35 | 82.5 | 4.3-4/2 | 03 |
| | 1200 | 575 | 145TC | U1P3GC | \$655 | DS-3RST | Rigid | 1.25 | 13.1 | 35 | 82.5 | 1.6 | |
| | 1200 | 208-230/460 | 56C | U1P3DFC | \$655 | DS-3RST | Rigid | 1.25 | 13.1 | 30 | 82.5 | 4.3-4/2 | 03 |
| | 1200 | 575 | 56C | U1P3GFC | \$655 | DS-3RST | Rigid | 1.25 | 13.1 | 30 | 82.5 | 1.6 | |
| | 1200 | 575 | 56C | U1P3GFCR | \$655 | DS-3RST | No | 1.25 | 13.4 | 35 | 82.5 | 1.6 | |
| 1 1/2 | 3600 | 208-230/460 | 143TC | U32P1DC | \$567 | DS-3RST | Rigid | 1.25 | 13.1 | 30 | 84.0 | 5.3-4.7/2.4 | 03 |
| | 3600 | 208-230/460 | 143TC | U32P1A14CR | \$552 | DS-3RST | No | 1.15 | 11.9 | 32 | 84.0 | 4.9-5.2/2.6 | |
| | 3600 | 575 | 143TC | U32P1GC | \$567 | DS-3RST | Rigid | 1.25 | 13.1 | 30 | 84.0 | 1.9 | |
| | 3600 | 575 | 143TC | U32P1GCR | \$647 | DS-3RST | No | 1.25 | 13.1 | 30 | 84.0 | 1.9 | |
| | 3600 | 208-230/460 | 56C | U32P1DFC | \$500 | DS-3RST | Rigid | 1.25 | 13.1 | 30 | 84.0 | 5.3-4.7/2.4 | 03 |
| | 3600 | 208-230/460 | 56J | EE661B | \$405 | DS-3RST | Rigid | 1.30 | 12.9 | 37 | 84.0 | 4.9-4.6/2.4 | 98 |
| | 3600 | 208-230/460 | 56C | T32P1ACR | \$485 | DS-3RST | No | 1.15 | 12.3 | 32 | 84.0 | 4.9-5.2/2.6 | |
| | 3600 | 208-230/460 | 56J | EE661 | \$390 | DS-3RST | No | 1.30 | 12.9 | 34 | 84.0 | 4.9-4.6/2.4 | 98 |
| | 3600 | 575 | 56C | U32P1GFC | \$567 | DS-3RST | Rigid | 1.25 | 13.1 | 30 | 84.0 | 1.9 | |
| | 3600 | 575 | 56C | U32P1GFCR | \$647 | DS-3RST | No | 1.25 | 13.1 | 30 | 84.0 | 1.9 | |
| | 3600 | 575 | 56J | EE661-5 | \$390 | DS-3RST | No | 1.25 | 12.9 | 40 | 84.0 | 1.7 | |
| | 1800 | 200 | 145TC | U32P2HC | \$549 | DS-3RST | Rigid | 1.25 | 13.1 | 35 | 86.5 | 5.7 | |
| | 1800 | 208-230/460 | 145TC | U32P2DC | \$549 | DS-3RST | Rigid | 1.15 | 13.1 | 35 | 86.5 | 5.4-5/2.4 | 03 |
| | 1800 | 208-230/460 | 145TC | U32P2DCR | \$534 | DS-3RST | No | 1.15 | 13.1 | 35 | 86.5 | 5.4-5/2.4 | 03 |
| | 1800 | 575 | 145TC | U32P2GC | \$549 | DS-3RST | Rigid | 1.25 | 13.1 | 35 | 86.5 | 2 | |
| | 1800 | 575 | 145TC | U32P2GCR | \$534 | DS-3RST | No | 1.25 | 13.1 | 35 | 86.5 | 2 | |
| | 1800 | 208-230/460 | 56C | U32P2DFC | \$442 | DS-3RST | Rigid | 1.25 | 13.1 | 30 | 86.5 | 5.4-5/2.5 | 03 |
| | 1800 | 208-230/460 | 56J | EE694 | \$426 | DS-3RST | Rigid | 1.15 | 13.9 | 26 | 86.5 | 4.9-4.9/2.5 | 03,98 |
| | 1800 | 208-230/460 | 56C | U32P2DFCR | \$426 | DS-3RST | No | 1.25 | 13.1 | 30 | 86.5 | 5.4-5/2.5 | 03 |
| | 1800 | 575 | 56C | U32P2GFC | \$442 | DS-3RST | Rigid | 1.25 | 13.1 | 30 | 86.5 | 2 | 03 |
| 1800 | 575 | 56C | U32P2GFCR | \$426 | DS-3RST | No | 1.25 | 13.1 | 30 | 86.5 | 2 | | |
| 1200 | 208-230/460 | 182TC | U32P3DC | \$845 | DS-3AL | Rigid | 1.25 | 16.2 | 60 | 87.5 | 0-5.5/2.7 | 03 | |
| 1200 | 575 | 182TC | U32P3GC | \$845 | DS-3AL | Rigid | 1.25 | 16.2 | 60 | 87.5 | 2.2 | | |
| 2 | 3600 | 208-230/460 | 145TC | U2P1DC | \$604 | DS-3RST | Rigid | 1.25 | 13.1 | 35 | 86.5 | 6.8-6/3 | 03 |
| | 3600 | 575 | 145TC | U2P1GC | \$604 | DS-3RST | Rigid | 1.25 | 13.1 | 35 | 86.5 | 2.4 | |
| | 3600 | 208-230/460 | 56C | U2P1DFC | \$491 | DS-3RST | Rigid | 1.25 | 13.1 | 30 | 86.5 | 6.8-6/3 | 03 |
| | 3600 | 208-230/460 | 56J | EE706B | \$480 | DS-3RST | Rigid | 1.25 | 13.4 | 39 | 85.5 | 5.4-5.1/2.6 | 98 |
| | 3600 | 208-230/460 | 56J | EE706 | \$465 | DS-3RST | No | 1.25 | 13.4 | 36 | 85.5 | 6.6-6.1/3.1 | 98 |
| | 3600 | 208-230/460 | 56C | T2P1ACR | \$529 | DS-3RST | No | 1.15 | 13.6 | 35 | 85.5 | 7.1-6.0/3.0 | 04,16 |
| | 3600 | 575 | 56C | U2P1GFC | \$496 | DS-3RST | Rigid | 1.25 | 13.1 | 30 | 86.5 | 2.4 | |
| | 3600 | 575 | 56C | U2P1GFCR | \$479 | DS-3RST | No | 1.25 | 13.1 | 30 | 86.5 | 2.4 | |
| | 3600 | 575 | 56J | EE706-5 | \$465 | DS-3RST | No | 1.25 | 13.4 | 45 | 85.5 | 2.3 | |
| | 1800 | 208-230/460 | 145TC | U2P2DC | \$593 | DS-3RST | Rigid | 1.15 | 13.1 | 35 | 86.5 | 0-6.3/3.1 | 03 |
| | 1800 | 208-230/460 | 145TC | U2P2DCR | \$578 | DS-3RST | No | 1.25 | 13.1 | 35 | 86.5 | 7.2-6.7/3.3 | 03 |
| | 1800 | 575 | 145TC | U2P2GC | \$593 | DS-3RST | Rigid | 1.25 | 13.1 | 35 | 86.5 | 2.7 | |
| | 1800 | 575 | 145TC | U2P2GCR | \$578 | DS-3RST | No | 1.25 | 13.1 | 35 | 86.5 | 2.7 | |
| | 1800 | 208-230/460 | 56C | U2P2DFC | \$484 | DS-3RST | Rigid | 1.25 | 13.1 | 30 | 86.5 | 7.2-6.7/3.3 | 03 |
| | 1800 | 208-230/460 | 56J | EE2156 | \$470 | DS-3RST | Rigid | 1.15 | 14.4 | 37 | 86.5 | 6.5-6.6/3.3 | 03,98 |
| | 1800 | 208-230/460 | 56C | U2P2DFCR | \$467 | DS-3RST | No | 1.25 | 13.1 | 30 | 86.5 | 7.2-6.7/3.3 | 03 |
| | 1800 | 575 | 56C | U2P2GFC | \$484 | DS-3RST | Rigid | 1.25 | 13.9 | 50 | 85.5 | 3 | 04,16 |
| | 1200 | 208-230/460 | 184TC | U2P3DC | \$930 | DS-3AL | Rigid | 1.25 | 16.9 | 70 | 88.5 | 0-7.2/3.6 | 03 |
| | 1200 | 575 | 184TC | U2P3GC | \$930 | DS-3AL | Rigid | 1.25 | 16.2 | 70 | 88.5 | 2.9 | |
| | 3 | 3600 | 208-230/460 | 145TC | U3P1AFC | \$600 | DS-3RST | Rigid | 1.25 | 13.1 | 35 | 86.5 | 9.4-9.1/4.5 |
| 3600 | | 208-230/460 | 145TC | U3P1A14CR | \$575 | DS-3RST | No | 1.25 | 13.9 | 34 | 86.5 | 8.7/4.3 | 04,16 |
| 3600 | | 575 | 145TC | U3P1G14C | \$600 | DS-3RST | Rigid | 1.25 | 13.1 | 35 | 86.5 | 3.6 | |
| 3600 | | 575 | 145TC | U3P1GCR | \$568 | DS-3RST | No | 1.25 | 13.1 | 35 | 86.5 | 3.6 | |
| 3600 | | 208-230/460 | 182TC | U3P1DC | \$860 | DS-3AL | Rigid | 1.25 | 16.2 | 50 | 87.5 | 0-9.4/4.7 | 03 |
| 3600 | | 208-230/460 | 182TCH | U3P1DK | \$860 | DS-3AL | Rigid | 1.25 | 16.2 | 50 | 87.5 | 0-9.4/4.7 | 03 |
| 3600 | | 575 | 182TC | U3P1GC | \$860 | DS-3AL | Rigid | 1.25 | 16.2 | 60 | 87.5 | 3.8 | |
| 3600 | | 208-230/460 | 56C | U3P1DFC | \$568 | DS-3RST | Rigid | 1.25 | 13.1 | 30 | 86.5 | 9.4-9.1/4.5 | 03 |
| 3600 | | 208-230/460 | 56J | EE707B | \$527 | DS-3RST | Rigid | 1.15 | 13.9 | 42 | 86.5 | 9.1-8.2/4.2 | |
| 3600 | | 208-230/460 | 56C | T3P1ACR | \$583 | DS-3RST | No | 1.15 | 14.1 | 40 | 86.5 | 7.7/3.9 | |
| 3600 | | 208-230/460 | 56J | EE707 | \$512 | DS-3RST | No | 1.15 | 14.4 | 42 | 86.5 | 9.1-8.2/4.2 | |
| 3600 | | 575 | 56C | U3P1GFC | \$568 | DS-3RST | Rigid | 1.25 | 13.1 | 30 | 86.5 | 3.6 | |
| 3600 | | 575 | 56C | U3P1GFCR | \$551 | DS-3RST | No | 1.25 | 13.1 | 30 | 86.5 | 3.6 | |
| 3600 | | 575 | 56J | EE707-5 | \$512 | DS-3RST | No | 1.15 | 14.4 | 45 | 86.5 | 3.0 | |
| 1800 | | 208-230/460 | 182TC | U3P2DC | \$772 | DS-3AL | Rigid | 1.25 | 16.2 | 70 | 89.5 | 0-9.5/4.7 | 03 |
| 1800 | | 208-230/460 | 182TCH | U3P2DK | \$772 | DS-3AL | Rigid | 1.25 | 16.2 | 60 | 89.5 | 0-9.5/4.7 | 03 |
| 1800 | | 208-230/460 | 182TC | S3P2AC | \$637 | DS-3RST | Rigid | 1.15 | 15.9 | 85 | 89.5 | 9.6-8.8/4.4 | 04,16 |
| 1800 | | 208-230/460 | 182TC | S3P2ACR | \$607 | DS-3RST | No | 1.15 | 15.9 | 60 | 89.5 | 9.6-8.8/4.4 | 04,16 |
| 1800 | | 575 | 182TC | U3P2GC | \$772 | DS-3AL | Rigid | 1.25 | 16.2 | 60 | 89.5 | 3.8 | |
| 1800 | | 575 | 182TC | S3P2GC | \$637 | DS-3RST | Rigid | 1.15 | 15.9 | 60 | 89.5 | 3.5 | 04 |
| 1800 | 575 | 182TC | S3P2GCR | \$607 | DS-3RST | No | 1.15 | 15.9 | 60 | 89.5 | 3.5 | 04 | |
| 1200 | 208-230/460 | 213TC | U3P3DC | \$1,150 | DS-3AL | Rigid | 1.15 | 18.8 | 110 | 89.5 | 0-10.5/4.9 | 03 | |

Note 03 60/50 Hz rated with no derate on HP; 230/460 volt 60 Hz ratings operate on 190/380 volt 50 Hz, 460V 60 Hz ratings operate on 380V 50 Hz; Full 60 & 50Hz data on Nameplate

Note 04 On 60 Hertz Sine Wave power

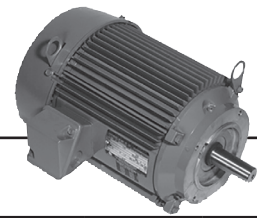
Note 14 NEMA® Design A

Note 16 Motors marked 208-230/460 volts may not meet all NEMA® (MG-1) performance standards when operated at 208 volts

Note 98 50/60 Hz Motor



Special Application Commercial Pump Three Phase Totally Enclosed Fan Cooled (TEFC) C-Face



(continued)

| HP | RPM | Voltage | Frame | Catalog Number | List | Discount Symbol | Base (Feet) | SF | "C" Dim. (inches) | Ship Wt. (lbs) | Full Load Eff. | Max Amps | Notes | |
|-------|------|-------------|-------------|----------------|----------|-----------------|-------------|-------|-------------------|----------------|----------------|----------------|--------------|-------|
| 5 | 3600 | 208-230/460 | 184TC | U5P1DC | \$1,056 | DS-3AL | Rigid | 1.15 | 16.2 | 75 | 88.5 | 0-13.8/6.9 | 03 | |
| | 3600 | 208-230/460 | 184TCH | U5P1DK | \$1,056 | DS-3AL | Rigid | 1.15 | 16.2 | 75 | 88.5 | 0-13.8/6.9 | 03 | |
| | 3600 | 208-230/460 | 184TC | S5P1AC | \$752 | DS-3RST | Rigid | 1.15 | 15.9 | 65 | 88.5 | 16-14/7 | 04,16 | |
| | 3600 | 208-230/460 | 184TC | S5P1ACR | \$722 | DS-3RST | No | 1.15 | 15.9 | 70 | 88.5 | 16-14/7 | 04,16 | |
| | 3600 | 575 | 184TC | S5P1GC | \$752 | DS-3RST | Rigid | 1.15 | 15.9 | 70 | 88.5 | 5.6 | 04 | |
| | 3600 | 575 | 184TC | U5P1GC | \$1,056 | DS-3AL | Rigid | 1.25 | 16.2 | 70 | 88.5 | 6.1 | | |
| | 3600 | 575 | 184TC | S5P1GCR | \$722 | DS-3RST | No | 1.15 | 15.9 | 70 | 88.5 | 5.6 | 04 | |
| | 1800 | 200 | 184TCH | U5P2HK | \$882 | DS-3AL | Rigid | 1.25 | 16.9 | 80 | 89.5 | 17.6 | 03 | |
| | 1800 | 208-230/460 | 184TC | U5P2DC | \$882 | DS-3AL | Rigid | 1.25 | 16.9 | 80 | 90.2 | 17.4-15.3/7.7 | 03 | |
| | 1800 | 208-230/460 | 184TCH | U5P2DK | \$882 | DS-3AL | Rigid | 1.25 | 16.9 | 80 | 90.2 | 17.4-15.3/7.7 | 03 | |
| | 1800 | 208-230/460 | 184TC | S5P2AC | \$752 | DS-3RST | Rigid | 1.15 | 15.9 | 110 | 89.5 | 0-14.1/7 | 04,16 | |
| | 1800 | 208-230/460 | 184TC | S5P2ACR | \$722 | DS-3RST | No | 1.15 | 15.9 | 70 | 89.5 | 15.7-14.1/7 | 04,16 | |
| | 1800 | 575 | 184TC | U5P2GC | \$882 | DS-3AL | Rigid | 1.25 | 16.9 | 70 | 89.5 | 6.2 | | |
| | 1800 | 575 | 184TC | S5P2GC | \$752 | DS-3RST | Rigid | 1.15 | 15.9 | 70 | 89.5 | 5.6 | 04 | |
| | 1800 | 575 | 184TC | S5P2GCR | \$722 | DS-3RST | No | 1.15 | 15.9 | 70 | 89.5 | 5.6 | 04 | |
| | 1200 | 208-230/460 | 215TC | U5P3DC | \$1,597 | DS-3AL | Rigid | 1.25 | 20.3 | 135 | 90.2 | 0-16.8/8.4 | 03 | |
| 1200 | 575 | 215TC | U5P3GC | \$1,597 | DS-3AL | Rigid | 1.25 | 20.3 | 135 | 89.5 | 6.7 | | | |
| 7 1/2 | 3600 | 208-230/460 | 213TC | S7P1AC | \$996 | DS-3RST | Rigid | 1.15 | 19.4 | 116 | 89.5 | 23.4-20.5/10.3 | 04,16 | |
| | 3600 | 208-230/460 | 213TC | U7P1DC | \$1,306 | DS-3AL | Rigid | 1.25 | 18.8 | 105 | 91.0 | 0-22.3/11.2 | 03 | |
| | 3600 | 208-230/460 | 213TC | S7P1ACR | \$951 | DS-3RST | No | 1.15 | 19.4 | 105 | 89.5 | 23.4-20.5/10.3 | 04,16 | |
| | 3600 | 575 | 213TC | U7P1GC | \$1,306 | DS-3AL | Rigid | 1.25 | 18.8 | 105 | 89.5 | 9.3 | | |
| | 3600 | 575 | 213TC | S7P1GC | \$996 | DS-3RST | Rigid | 1.15 | 19.4 | 105 | 89.5 | 8.3 | 04,16 | |
| | 3600 | 575 | 213TC | S7P1GCR | \$951 | DS-3RST | No | 1.15 | 19.4 | 105 | 89.5 | 8.3 | 04 | |
| | 1800 | 208-230/460 | 213TC | U7P2DC | \$1,192 | DS-3AL | Rigid | 1.25 | 19.1 | 105 | 91.7 | 0-22.5/11.3 | 03 | |
| | 1800 | 208-230/460 | 213TC | S7P2AC | \$956 | DS-3RST | Rigid | 1.15 | 19.4 | 90 | 91.7 | 23.1-20.7/10.4 | 04,16 | |
| | 1800 | 208-230/460 | 213TC | S7P2ACR | \$911 | DS-3RST | No | 1.15 | 19.4 | 105 | 91.7 | 23.1-20.7/10.4 | 04,16 | |
| | 1800 | 575 | 213TC | S7P2GC | \$956 | DS-3RST | Rigid | 1.15 | 19.4 | 105 | 91.7 | 8.3 | 04,16 | |
| | 1800 | 575 | 213TC | U7P2GC | \$1,192 | DS-3AL | Rigid | 1.25 | 18.8 | 105 | 91.7 | 9 | | |
| | 1800 | 575 | 213TC | S7P2GCR | \$911 | DS-3RST | No | 1.15 | 19.4 | 105 | 91.7 | 8.3 | 04 | |
| | 1200 | 208-230/460 | 254TC | U7P3DC | \$2,147 | DS-3AL | Rigid | 1.25 | 23.9 | 180 | 91.0 | 0-23.1/11.6 | 03 | |
| | 1200 | 575 | 254TC | U7P3GC | \$2,147 | DS-3AL | Rigid | 1.25 | 24.0 | 180 | 91.0 | 9.3 | | |
| | 10 | 3600 | 208-230/460 | 215TC | U10P1DC | \$1,511 | DS-3AL | Rigid | 1.25 | 20.3 | 125 | 91.0 | 35-29.8/14.9 | 03 |
| | | 3600 | 208-230/460 | 215TC | S10P1AC | \$1,142 | DS-3RST | Rigid | 1.15 | 19.4 | 131 | 90.2 | 0-27.2/13.6 | 04,16 |
| 3600 | | 208-230/460 | 215TC | S10P1ACR | \$1,097 | DS-3RST | No | 1.15 | 19.4 | 120 | 90.2 | 31-27.2/13.6 | 04,16 | |
| 3600 | | 575 | 215TC | U10P1GC | \$1,511 | DS-3AL | Rigid | 1.25 | 20.1 | 125 | 91.7 | 11.9 | | |
| 3600 | | 575 | 215TC | S10P1GC | \$1,078 | DS-3RST | Rigid | 1.15 | 19.4 | 120 | 90.2 | 10.9 | 04,16 | |
| 3600 | | 575 | 215TC | S10P1GCR | \$1,097 | DS-3RST | No | 1.15 | 19.4 | 120 | 90.2 | 10.9 | 04 | |
| 1800 | | 208-230/460 | 215TC | U10P2DC | \$1,416 | DS-3AL | Rigid | 1.25 | 20.3 | 133 | 91.7 | 0-30/15 | 03 | |
| 1800 | | 208-230/460 | 215TC | S10P2AC | \$1,176 | DS-3RST | Rigid | 1.15 | 19.4 | 120 | 91.7 | 31-27.5/13.8 | 04,16 | |
| 1800 | | 208-230/460 | 215TC | S10P2ACR | \$1,131 | DS-3RST | No | 1.15 | 19.4 | 120 | 91.7 | 31-27.5/13.8 | 04,16 | |
| 1800 | | 575 | 215TC | U10P2GC | \$1,416 | DS-3AL | Rigid | 1.25 | 20.3 | 133 | 91.7 | 12 | | |
| 1800 | | 575 | 215TC | S10P2GC | \$1,176 | DS-3RST | Rigid | 1.15 | 19.4 | 120 | 91.7 | 11 | 04,16 | |
| 1800 | | 575 | 215TC | S10P2GCR | \$1,131 | DS-3RST | No | 1.15 | 19.4 | 120 | 91.7 | 11 | 04 | |
| 1200 | | 208-230/460 | 256TC | U10P3DC | \$2,558 | DS-3AL | Rigid | 1.25 | 25.8 | 230 | 91.7 | 0-31/15.3 | 03 | |
| 15 | | 3600 | 230/460 | 254TC | S15P1ACR | \$1,658 | DS-3RST | No | 1.15 | 27.7 | 180 | 91.0 | 35/17.3 | |
| | | 3600 | 208-230/460 | 215TC | U15P1DFC | \$1,812 | DS-3AL | Rigid | 1.25 | 20.3 | 120.0 | 91.0 | 0-45/22.5 | 03 |
| | | 3600 | 208-230/460 | 254TC | U15P1DC | \$2,174 | DS-3AL | Rigid | 1.25 | 24.0 | 180.0 | 91.0 | 0-44/22.2 | 02,03 |
| | 3600 | 575 | 254TC | S15P1GCR | \$1,658 | DS-3RST | No | 1.15 | 27.7 | 180 | 91.0 | 13.9 | | |
| | 3600 | 575 | 254TC | U15P1GC | \$2,174 | DS-3AL | Rigid | 1.25 | 24.0 | 185.0 | 91.0 | 17.9 | | |
| | 1800 | 230/460 | 254TC | S15P2ACR | \$1,655 | DS-3RST | No | 1.15 | 27.7 | 180 | 92.4 | 36/17.9 | | |
| | 1800 | 208-230/460 | 254TC | U15P2DC | \$1,973 | DS-3AL | Rigid | 1.15 | 23.9 | 180 | 92.4 | 0-42/21 | 03 | |
| | 1800 | 575 | 254TC | S15P2GCR | \$1,655 | DS-3RST | No | 1.15 | 27.7 | 180 | 92.4 | 14.4 | | |
| | 20 | 3600 | 230/460 | 256TC | S20P1ACR | \$2,025 | DS-3RST | No | 1.15 | 27.7 | 230 | 91.0 | 46/23 | 14 |
| | | 3600 | 208-230/460 | 256TC | U20P1DC | \$2,650 | DS-3AL | Rigid | 1.25 | 25.6 | 230.0 | 91.0 | 0-59/29.7 | 02,03 |
| 3600 | | 575 | 256TC | S20P1GCR | \$2,025 | DS-3RST | No | 1.15 | 27.7 | 230 | 91.0 | 18.5 | 14 | |
| 3600 | | 575 | 256TC | U20P1GC | \$2,650 | DS-3AL | Rigid | 1.25 | 25.8 | 230.0 | 91.0 | 23.9 | 02 | |
| 1800 | | 230/460 | 256TC | S20P2ACR | \$2,013 | DS-3RST | No | 1.15 | 27.7 | 230 | 93.0 | 48/24 | 14 | |
| 1800 | | 208-230/460 | 256TC | U20P2DC | \$2,391 | DS-3AL | Rigid | 1.25 | 25.8 | 230.0 | 93.0 | 0-60/29.8 | 03 | |
| 1800 | | 575 | 256TC | S20P2GCR | \$2,013 | DS-3RST | No | 1.15 | 27.7 | 230 | 93.0 | 19.4 | 14 | |
| 25 | | 3600 | 208-230/460 | 284TC | U25P1DC | \$3,268 | DS-3AL | Rigid | 1.25 | 28.3 | 250 | 91.7 | 0-74/37 | 03 |
| | 1800 | 208-230/460 | 284TC | U25P2DC | \$2,890 | DS-3AL | Rigid | 1.25 | 28.3 | 280 | 93.6 | 0-74/37 | 03 | |
| 30 | 1800 | 208-230/460 | 286TC | U30P2DC | \$3,333 | DS-3AL | Rigid | 1.25 | 28.4 | 325 | 93.6 | 92-91/45 | 03 | |

Note 02 Suitable for Wye-Delta start on voltages shown
 Note 03 60/50 Hz rated with no derate on HP; 230/460 volt 60 Hz ratings operate on 190/380 volt 50 Hz, 460V 60 Hz ratings operate on 380V 50 Hz; Full 60 & 50 Hz data on Nameplate

Note 04 On 60 Hertz Sine Wave power
 Note 14 NEMA[®] Design A
 Note 16 Motors marked 208-230/460 volts may not meet all NEMA[®] (MG-1) performance standards when operated at 208 volts



BRAKEMOTORS
 GENERAL PURPOSE SINGLE PHASE
 HVAC
 WASHDOWN
 AGRICULTURE
 COMMERCIAL PUMP MOTORS
 CLOSE COUPLED PUMP MOTORS
 FIRE PUMP MOTORS
 POOL & SPA MOTORS
 RESIDENTIAL WATER PUMP
 ELEVATOR GATE & DOOR