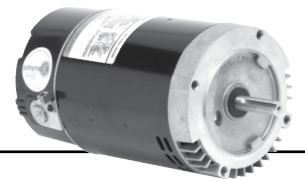


C-Flange Pool and Spa Motors

Switchless Design, 6.5" Frame Diameter, Category "C" & "J"



FEATURES:

- Two Compartment
- Shaft Threads - 7/16-20 UNF-2A
- 50°C Ambient
- 1081 Design
- Continuous Duty
- Class B Insulated
- Open Dripproof
- 300 Series Stainless Steel Shaft
- Thermally Protected
- Voltage Selection Device (Dual Voltage Only)
- **Discount symbol: DS-FPS**



- Optimized internal airflow design minimizes heat and moisture buildup inside the motor
- Internal bearing cover protects the drive/pump end ball bearing from water and debris that may occur inside of the motor
- Three additional layers of drive/pump end bearing protection:
 - Double Sealed Ball Bearing
 - Lip Seal
 - Water Slinger

Standard Efficient, Total Horsepower Rated



THP	RPM	Voltage	Freq	Amps	Shaft	Catalog Number	Motor Frame	Length Less Shaft	Wgt.	List
0.98	3450	230/115	60	5.4/10.8	Threaded	ASB126	56J	10.26	20	\$241
1.25	3450	230/115	60	7.0/14.0	Threaded	ASB127	56J	10.76	23	\$268
1.65	3450	230/115	60	7.7/15.4	Threaded	ASB128	56J	11.01	24	\$307
2.25	3450	230/115	60	10.8/21.6	Threaded	ASB129	56J	12.01	31	\$415
2.60	3450	230	60	11.5	Threaded	ASB130	56J	11.76	30	\$497
3.45	3450	208-230	60	14.8-13.5	Threaded	ASB818	56J	12.51	36	\$659
5.00	3450	208-230	60	21.0-19.4	Threaded	ASB819 ^Δ	56J	14.01	50	\$713

extreme-E Premium Energy Eff., Total Horsepower Rated (Suitable for 50Hz)**



THP	RPM	Voltage	Freq	Amps	Shaft	Catalog Number	Motor Frame	Length Less Shaft	Wgt.	List
0.98	3450	208-230/115	60	4.5-4.3/8.6	Keyed	ASB656	56C	10.51	20	\$303
0.98	3450	208-230/115	60	4.5-4.3/8.6	Threaded	ASB657	56J	10.51	20	\$307
1.25	3450	208-230/115	60	5.9-5.5/11.0	Keyed	ASB634	56C	11.01	23	\$333
1.25	3450	208-230/115	60	5.9-5.5/11.0	Threaded	ASB638	56J	11.01	23	\$337
1.65	3450	208-230/115	60	7.6-7.2/14.4	Keyed	ASB653	56C	11.26	25	\$370
1.65	3450	208-230/115	60	7.6-7.2/14.4	Threaded	ASB654	56J	11.26	25	\$374
2.25	3450	208-230/115	60	9.7-9.0/18.0	Keyed	ASB795	56C	12.01	32	\$410
2.25	3450	208-230/115	60	9.7-9.0/18.0	Threaded	ASB796	56J	12.01	32	\$428
2.60	3450	208-230	60	10.6-10.0	Keyed	ASB808	56C	12.01	34	\$492
2.60	3450	208-230	60	10.6-10.0	Threaded	ASB809	56J	12.01	32	\$501
3.45	3450	208-230	60	14.8-13.5	Keyed	ASB817	56C	12.51	36	\$651
3.45	3450	208-230	60	14.8-13.5	Threaded	ASB818	56J	12.51	36	\$659
5.00	3450	208-230	60	21.0-19.4	Threaded	ASB819 ^Δ	56J	14.01	50	\$713
5.00	3450	208-230	60	21.0-19.4	Threaded	•ASB116 ^{Δ◇}	56Y	14.76	53	\$800

PENTAIR Max-E-GLAS^{®†} & DURA*GLAS^{®†} Replacement Motor Base Available B3574344900010L

^Δ190 Volt Maximum Operating Voltage for 50 Hz

[◇]B14 flange, metric shaft

[◇] Not Normally Stocked

* California Energy Commission (CEC) Appliance Regulations (Title 20) compliant

** Contact dealer for full conditions of operation

Catalog numbers are for competitive comparison purposes only.



Extreme-E[®] represents our most efficient running, highest performing lines of motors.

[†] All marks shown within this document are properties of their respective owners.

BRAKEMOTORS
GENERAL PURPOSE SINGLE PHASE
HVAC
WASHDOWN
AGRICULTURE
COMMERCIAL PUMP MOTORS
CLOSE COUPLED PUMP MOTORS
FIRE PUMP MOTORS
POOL & SPA MOTORS
RESIDENTIAL WATER PUMP
ELEVATOR GATE & DOOR